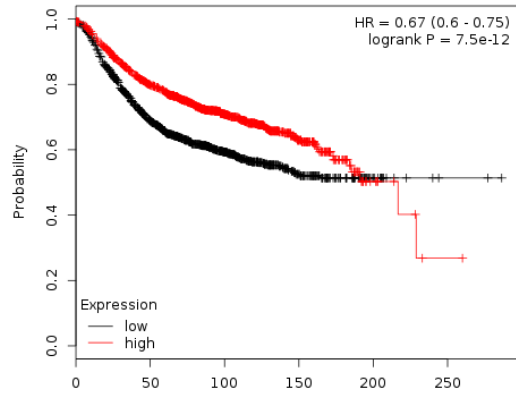
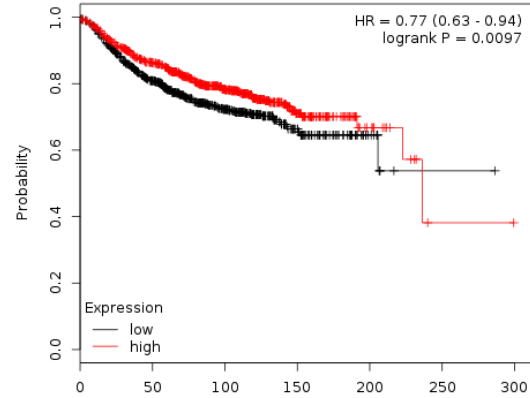


A. TP63 RFS



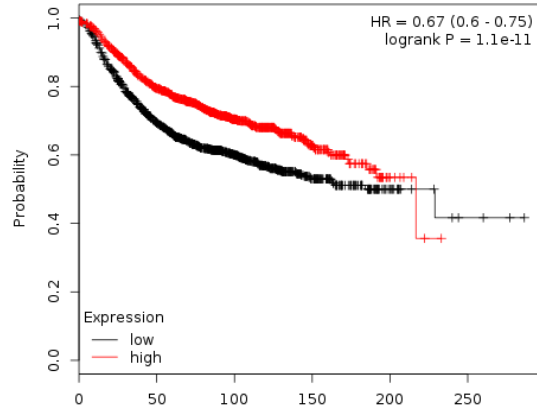
Number at risk		0	50	100	150	200	250
low	1780	1044	453	111	18	2	
high	1774	1271	617	130	9	1	

B. TP63 DMFS



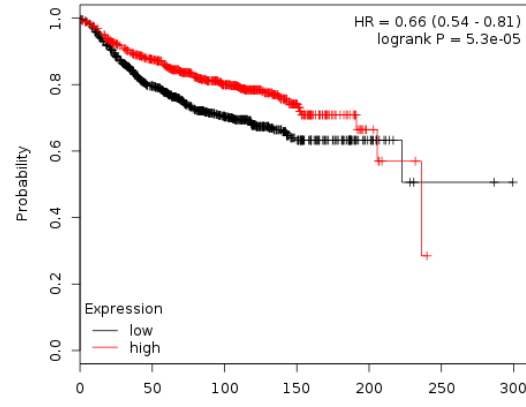
Number at risk		0	50	100	150	200	250	300
low	804	549	268	77	12	1	0	
high	805	608	322	88	15	1	0	

STAT6 RFS



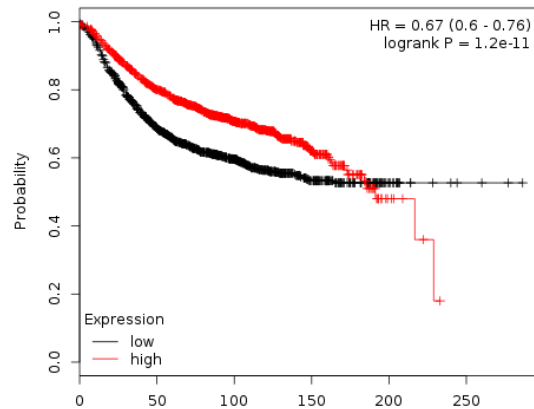
Number at risk		0	50	100	150	200	250
low	1788	1088	526	130	18	3	
high	1766	1227	544	111	9	0	

STAT6 DMFS



Number at risk		0	50	100	150	200	250	300
low	807	531	277	91	19	2	0	
high	802	626	313	74	8	0	0	

TP63, STAT6 combined RFS



Number at risk		0	50	100	150	200	250
low	1784	1050	487	126	20	3	
high	1770	1265	583	115	7	0	