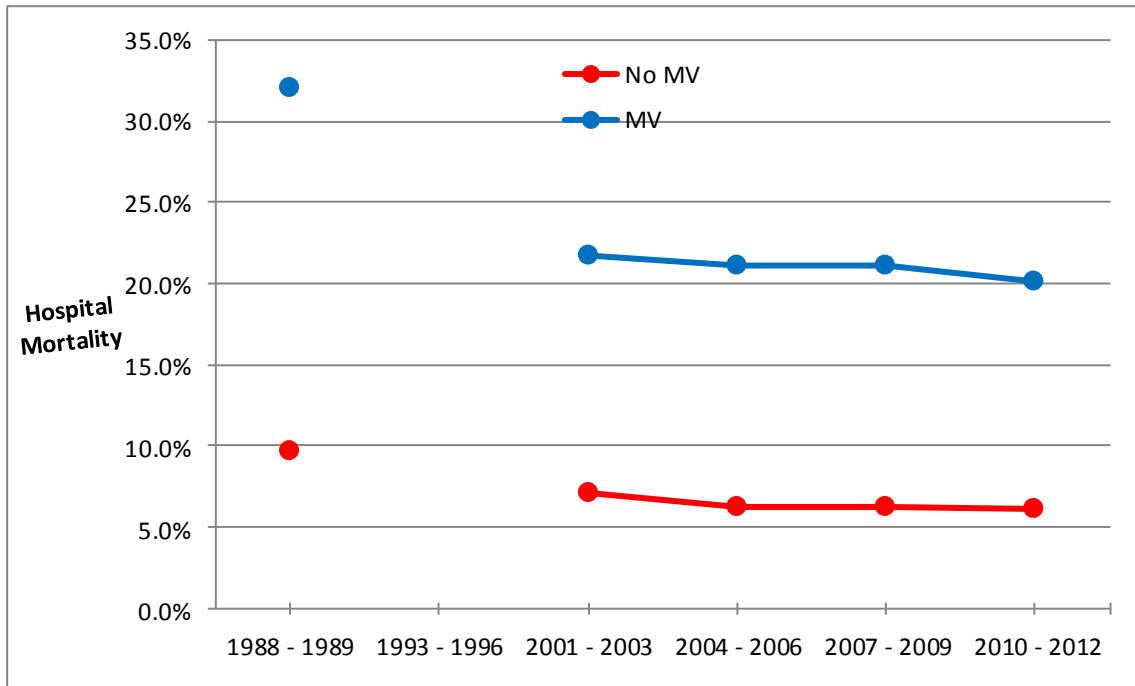
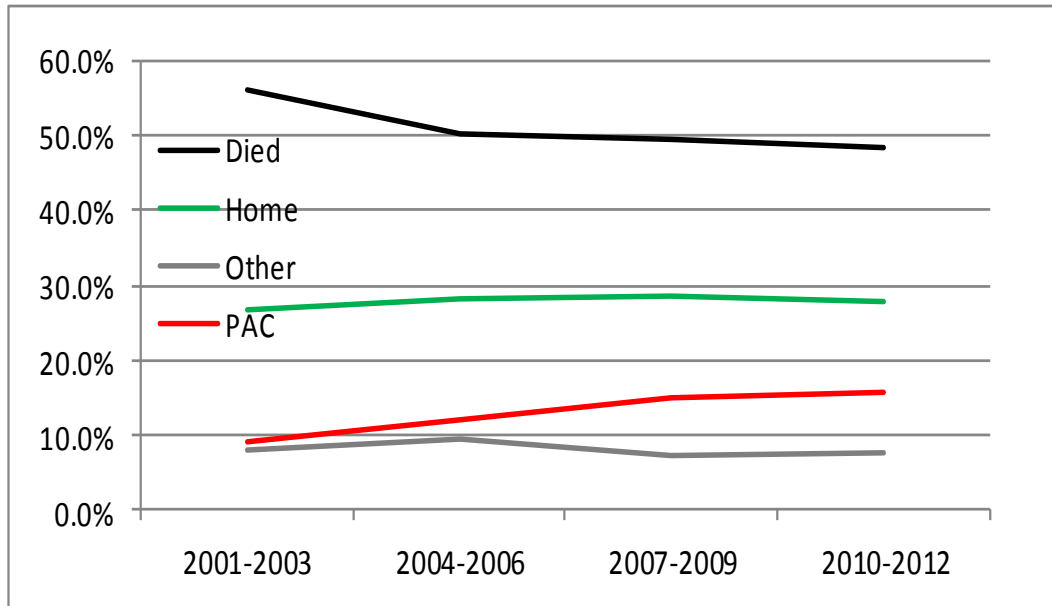


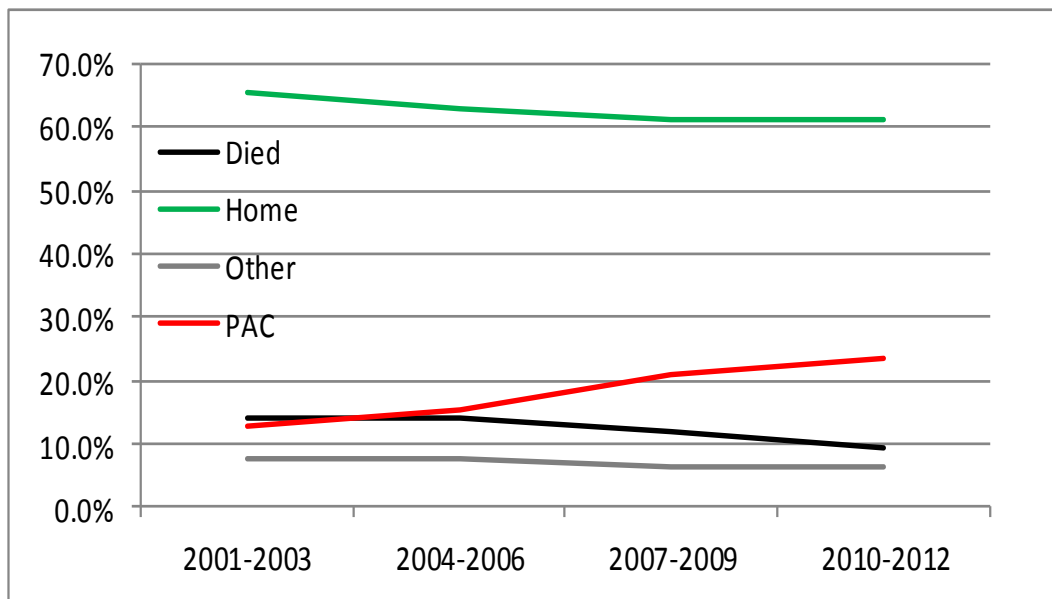
**E. Figure1.** Hospital mortality for 44,973 ICU admissions from 1988-1989 to 2010-2012, stratified by whether or not a patient received mechanical ventilation (MV) during day 1. Data on ventilator status for admissions during 1993-1996 were not available.



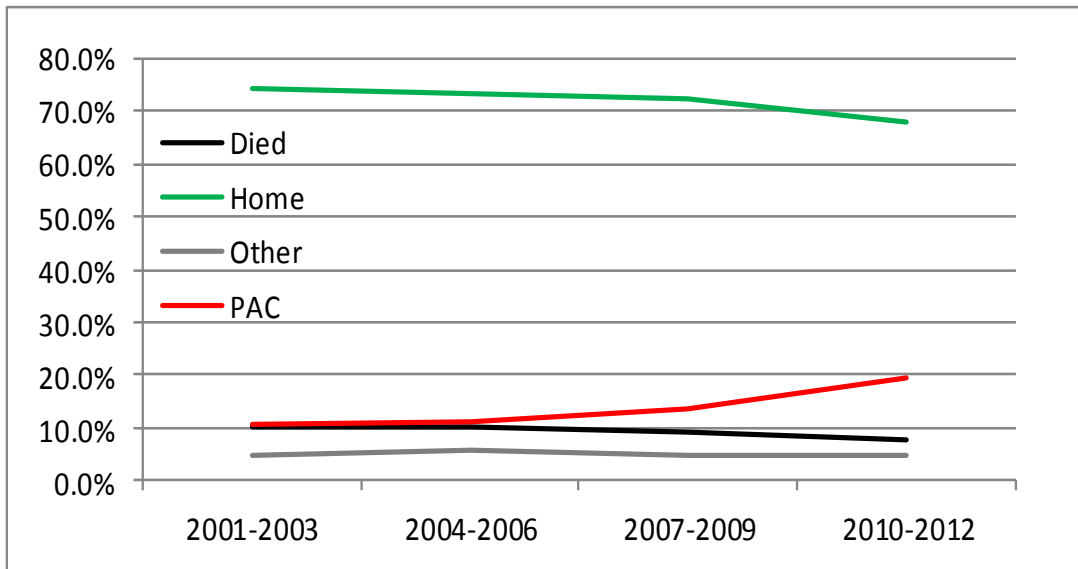
**E. Figure 2.** Discharge destination from 2001 - 2012 for patients with at least 2,500 admissions in 2010-12: Diagnosis of *Cardiac arrest*



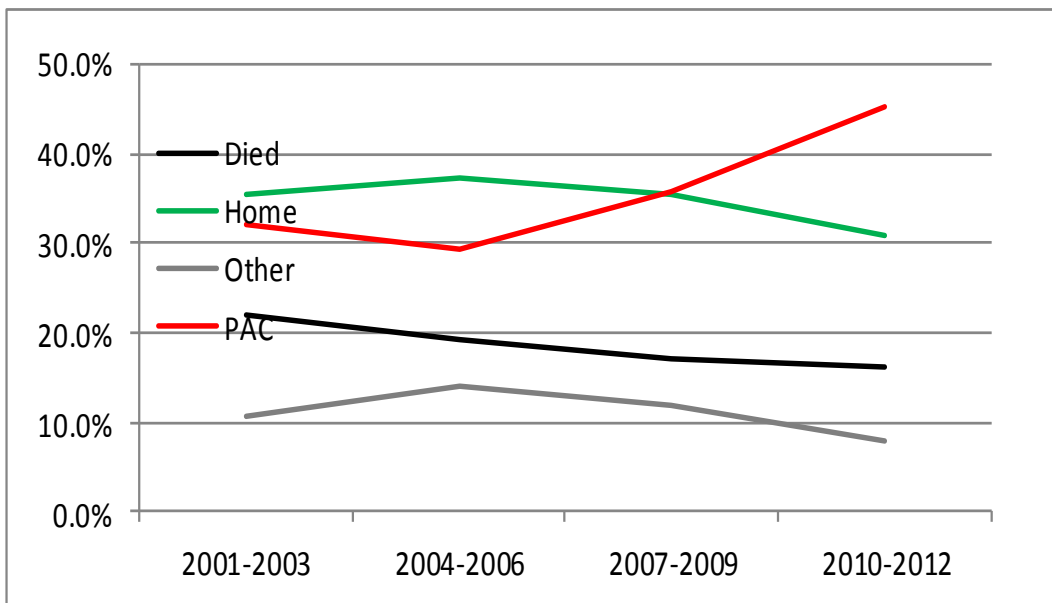
**E. Figure 3.** Discharge destination from 2001 - 2012 for patients with at least 2,500 admissions in 2010-12: Diagnosis of *Congestive heart failure*



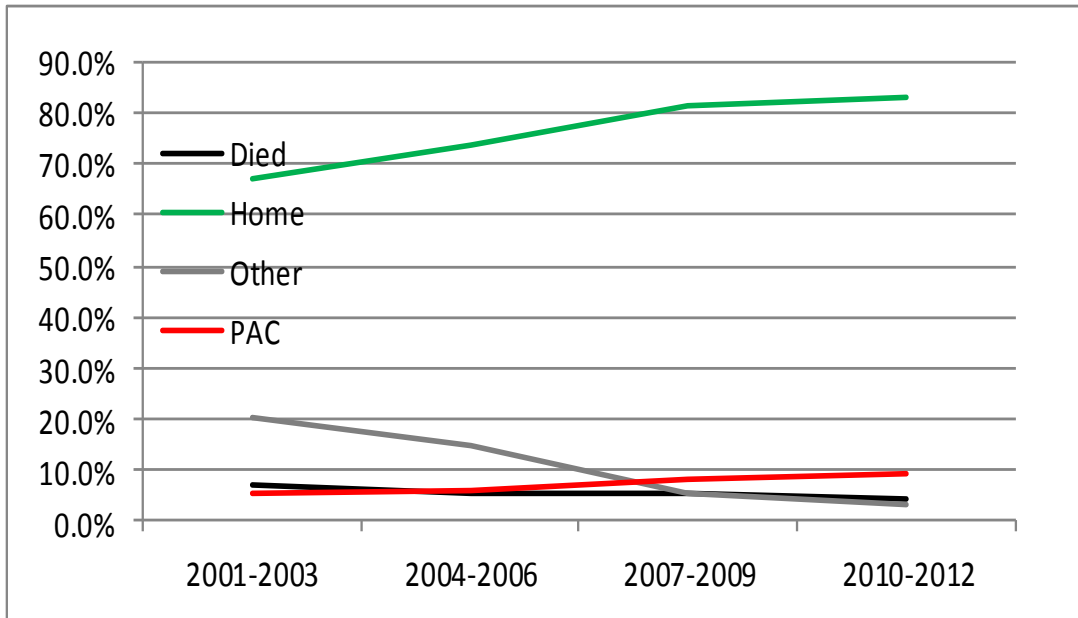
**E. Figure 4.** Discharge destination from 2001 - 2012 for patients with at least 2,500 admissions in 2010-12: Diagnosis of *GI bleeding, upper*



**E. Figure 5.** Discharge destination from 2001 - 2012 for patients with at least 2,500 admissions in 2010-12: Diagnosis of *Stroke*



**E. Figure 6.** Discharge destination from 2001 - 2012 for patients with at least 2,500 admissions in 2010-12: Diagnosis of *Acute myocardial infarction*



**E. Figure 7.** Discharge destination from 2001 - 2012 for patients with at least 2,500 admissions in 2010-12: Diagnosis of *Sepsis*

