

**Himmelfarb Health Sciences Library, The George Washington University  
Health Sciences Research Commons**

---

Information Interface (1976 - 2009)

Himmelfarb Health Sciences Library

---

11-1-1991

# Information Interface - Volume 15, Issue 5 - November/December 1991

George Washington University, Himmelfarb Health Sciences Library

Follow this and additional works at: <https://hsrc.himmelfarb.gwu.edu/ii>

 Part of the [Library and Information Science Commons](#), and the [Medicine and Health Sciences Commons](#)

---

## Recommended Citation

George Washington University, Himmelfarb Health Sciences Library, "Information Interface - Volume 15, Issue 5 - November/December 1991" (1991). *Information Interface (1976 - 2009)*. Paper 84.  
<https://hsrc.himmelfarb.gwu.edu/ii/84>

This Newsletter is brought to you for free and open access by the Himmelfarb Health Sciences Library at Health Sciences Research Commons. It has been accepted for inclusion in Information Interface (1976 - 2009) by an authorized administrator of Health Sciences Research Commons. For more information, please contact [hsrc@gwu.edu](mailto:hsrc@gwu.edu).

## Himmelfarb Health Sciences Library...

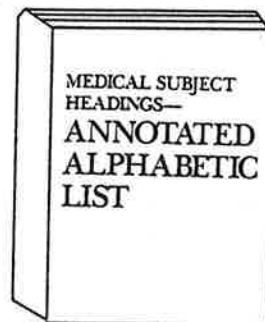
### November is MeSH Fest Month at Himmelfarb Library

During August 1991, 41,414 journal article citations were added to **MEDLINE**, a database that contains 7 million citations. From this vast ocean of citations, how can you locate the precise articles needed for a specific patient's care or for research on a grant proposal? How will you know what words to enter to find just the information you need?

There is a way! You should turn to one of the green Medical Subject Headings (MeSH) volumes to select terms that best describe your topic. MeSH is a powerful tool to help researchers, clinicians and students locate books or journal articles on a topic.

To promote a greater awareness of MeSH, Himmelfarb Library is sponsoring a MeSH Fest during November. Highlights include:

- o MeSH Brain Twister Quiz with a prize to the winner
- o MeSH "Amazin' Facts" poster
- o Visual display of the three sections of MeSH
- o MeSH instruction handout



#### INSIDE.....

Are You a Journal Watcher?.....	p.2
Network for Continuing Medical Education.....	p.3
Winter Classes.....	p.4
Improve Your Slides.....	p.5

## Be a Journal Watcher!

Don't have enough time to keep up with the literature? Take advantage of Journal Watch. Journal Watch is a medical literature surveillance service produced by the Massachusetts Medical Society which is available on **BRS Colleague**. Physician editors critically review and summarize the most important new clinical studies published in 20 leading medical journals. They prepare abstracts that include data on the study question and design, results, conclusions and significance of the research. Journal coverage includes *JAMA*, *New England Journal of Medicine*, *Lancet*, *Annals of Internal Medicine*, and *Science*. Stories are updated biweekly.

**BRS Colleague** subscribers can search Journal Watch by choosing the Medical News Service menu selection. Updated headlines and article summaries are posted in the Hospital Reading Room and the house staff lounge on the 2nd floor of the hospital.

To read the original publication, see the journals in the Hospital Reading Room or the Himmelfarb Library. Any questions or comments can be directed to Nancy Terry at ext. 42525 or ext. 41824.

### ?? Question of the Month ??

This issue of *Information Interface* describes several methods to keep up with the medical literature. The staff of Himmelfarb Library would like to know how you maintain currency in your field and what services we may offer to help you. Please call or send in your answers and suggestions to Dana Powell-Givens or Mildred Jefferson, Himmelfarb Library, room 101, ext. 43528. Answers will be published in our next issue.

## Keeping Up with the Literature with SDI

The Himmelfarb Library's **SDI** (Selective Dissemination of Information) service automatically provides patrons with the MOST CURRENT references on topics of ongoing interest. Researchers can use the **SDI** service to track developments in their fields of interest. Clinicians can use it to keep up-to-date in their specialties. Managers can see what's new in health administration. **SDI** searches are a quick way to stay current on important topics.

Charges for **MEDLINE SDI's** are nominal, costing \$1.50 per month plus \$.30 per page of printed citations received. There is also an initial charge of \$8.00. The monthly printouts are mailed to each patron.

Let us help you keep up! You can initiate **SDI** service by calling ext. 4-2850 or by submitting a computer literature search with the notation "**SDI** request."

## Barcode Technology in the BAVSC

The Library's Audiovisual Study Center now has a videodisc station displaying barcode technology. Textbooks with imbedded barcodes are accompanied by videodiscs containing relevant visual images. The student, scanning with the barcode reader, can display the appropriate visual image to accompany the text on a graphics monitor.

The titles now available are:

*Introduction to Functional Histology* by Ira R. Telford and Charles F. Bridgman. This text was coded to access images on the *Human Light Microscopic Anatomy* videodisc developed by Dr. Frank Allan, Professor Emeritus of Anatomy at GWUMC, together with the staff of the Lister Hill National Center for Biomedical Communications, National Library of Medicine.

*ACR Learning Files* produced by the American College of Radiology. This set of four textbooks and accompanying videodiscs offers high quality images to accompany textual descriptions.

*Basic Human Anatomy: Neuroanatomy* produced by Teaching Films offers a videodisc of neuroanatomy images.

Other videodisc "visual libraries" have been produced that store still images, motion video and animation that pertain to medicine and allied health education--notably the *Slice of Life* series. The barcode technology offers yet another method of "repurposing" these encyclopedias of images.

If you are interested in investigating this technology, call Barbara Collins or Lynn Povanda at ext. 42856.

*The Information Interface is published 6 times a year by the Himmelfarb Health Sciences Library, the George Washington University Medical Center, 2300 Eye Street N.W., Washington, DC 20037, 202-994-2850, Fax 202-223-3691. Editors: Karyn Pomerantz, Dana Powell-Givens; Assistant Editor: Mildred Jefferson; Faculty Publications Editor: Sally Winthrop. Contributions to this issue: Library and Biomedical Communications Staff.*

## Do You Know about the Network for Continuing Medical Education?

Are you looking for creative ways to present CE courses to your staff? The Himmelfarb Library may have the answer in the Network for Continuing Medical Education (NCME) videotapes. NCME subjects are chosen to meet the educational needs and interests of specialists and primary care physicians. Only two months lapse between production and use, making programs more current than those from any other A-V resources - even more up to date than many medical journals.

Programs are produced in 1/2" videocassette format and sent to the Himmelfarb Library twice a month. Tapes come with a study guide which summarizes the tape and lists references for suggested reading. Physicians can obtain continuing medical education credit by filling out the post test at the back of the study guide and mailing it to NCME (no postage necessary).

Tapes are available and can be viewed in the Bloedorn Audiovisual Study Center on the third floor of the Library or can be checked out for your convenience. To discover what programming is available via NCME, please search the Health and Training Videos (HTV) database (located in Himmelfarb Library, the Hospital Reading Room, and through dial access into Himmelfarb's computer) or call Nancy Terry at ext. 42850.

So grab a bag of popcorn and watch an NCME video today!!

Some recently received and upcoming tapes are:

- Current Concepts in the Management of Anaerobes in Perioperative Abdominal Infections
- Emergency Room Guidelines for Severe Burns
- Suturing Techniques and Principles for the Emergency Room
- Principles of Intensive Care Management
- Irritable Bowel Syndrome: New Medical and Surgical Techniques
- Reflex Sympathetic Dystrophy: Diagnosis and Treatment
- NSAID Induced Gastropathy

## Consultations Offered at Himmelfarb

Have you ever wondered how to arrange to do your own online searching or how to tackle a difficult research question? The Himmelfarb Library staff will be happy to schedule an appointment with you to discuss your information problems. We can help you select software, telecommunications programs and search systems. We can also arrange private sessions with individuals or departments to demonstrate **miniMEDLINE**, **MAILMAN** or any other Library service.

Please give us a call! We can be reached at ext. 42850 and we can meet at the Library or in your office or lab.

## MeSH SETS NOW AVAILABLE

The 1992 Medical Subject Heading volumes may be ordered from the National Technical Information Service by calling (703) 487-4650. All major credit cards are accepted. Mail orders can be directed to: NTIS, 5285 Port Royal Road, Springfield, VA 22161.

These volumes are essential for effective searching of **miniMEDLINE** and **MEDLINE** on any search service. If you search **MEDLINE** from your home or office, please consider ordering MeSH. The prices and order numbers are as follows:

ORDER NUMBER	PUBLICATION TITLE	PRICE
PB92-100031/GBB	Medical Subject Headings, Annotated Alphabetic List, 1992	\$40.00
PB92-100049/GBB	Medical Subject Headings, Tree Structures, 1992	\$35.00
PB92-100056/GBB	Permuted MeSH, 1992	\$31.00

Please add \$3.00 for shipping/handling per order.

Call Sally Winthrop at ext. 48478 for more information.

---

## **November-December Classes at Himmelfarb**

**T**he Himmelfarb Library is offering the following classes in November and December:

Introduction to Micros & DOS	December 10	2-4 PM
Introducing Your New Office Computer!	December 11	1:30-4 PM
Introduction to WordPerfect	November 19 December 17	2-4 PM 2-4 PM
WordPerfect Table of Contents/ Indexing	December 16	12-1 PM
Harvard Graphics	December 19	2-4 PM
Quattro Pro	November 21 December 12	2-4 PM 2-4 PM
Improve Your Presentations!	November 20	12-1 PM
SLEUTH (Library Research)	December 18	2-3 PM
Grateful MED	December 3	1-4 PM
BRS/Colleague	December 13	10-12 noon
Networking (BitNET, Internet)	December 18	10-11 AM

Call (202)994-2850 for registration and more information.

---

## **Staff Changes at Himmelfarb**

**T**he Himmelfarb Library is pleased to welcome Daisy Espinosa as the new Senior Clerk in the Bloedorn Audiovisual Study Center. She will be handling all AV Circulation Desk procedures, HSN video taping, and Room Reservations. Ms. Espinosa graduated from Virginia Wesleyan College with a Bachelor of Arts in Mass Communications and in Spanish. She has worked part-time at Municipal Cable Channel 29 in Virginia Beach, VA and, recently, at The Metropolitan Club of Washington. We look forward to working with her.

The Himmelfarb Library will lose an essential member of its staff. Jessee Miller who keeps the Library looking great will be retiring on November 29, 1991. She has been at the University since 1960 and at Himmelfarb since the early 80's. Jessee knows all students by name and is always there to give moral support. Jessee will be missed by the staff and students. Join us in wishing her well during her last days. We miss you Jessee. Good Luck and enjoy!

# Biomedical Communications...

## Improve Your Slides

The staff of Biomedical Communications is often asked for guidelines in preparing text and graphic materials for slide presentations. The ideas and examples below provide some basic guidelines in dealing with the most common problems we see in art work given to us for imaging. The same rules apply whether the work is done with word processing, computer graphic software or hand prepared art work.

### Legibility guidelines:

**1** **5 Words in the Title** **2**

**No More Than 7 Lines in Height**

**No More Than 7 Words in Width** **3**

Two Lines might fit better than one

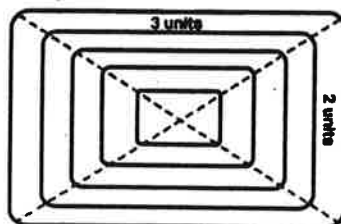
Two lines might fit better than one

### Rule of thumb:

If you can read the slide comfortably without a projector, it will usually be legible on the screen.

Difficult to read  
**ALL UPPER CASE**  
Visually Pleasing

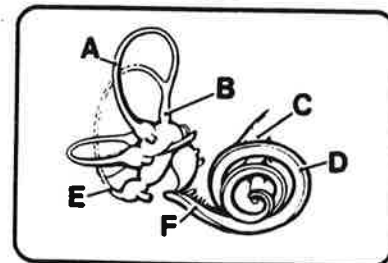
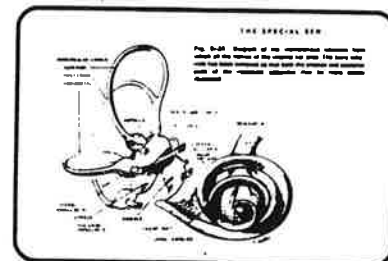
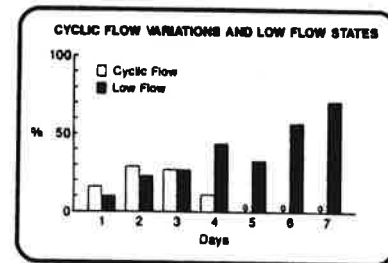
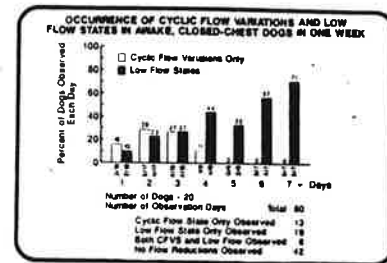
The best method for producing typed copy is typesetting as opposed to the typewriter or a computer printout.



### Slide format proportions:

For maximum word size, use the 2:3 ratio.

### Simplify your slides:



# Faculty Publications

The George Washington University Medical Center

Compiled by the Himmelfarb Health Sciences Library

- Aronson D. L. The current status of recombinant human factor viii. *Semin-hematol* 1991 apr; 28(2 suppl 1): 55-6.
- Bailey J. M.; Verma M. Analytical procedures for a cryptic messenger rna that mediates translational control of prostaglandin synthase by glucocorticoids. *Anal-biochem* 1991 jul; 196(1): 11-8.
- Berkowitz R. G.; Grundfast K. M.; Scott C.; Saal H.; Stern H.; Rosenbaum K. Middle ear disease in childhood achondroplasia. *Ear nose throat j* 1991; 70(5): 305-308.
- Bernstein J. J.; Laws E. R. Jr. Levine, K. V.; Wood L. R.; Tadvalkar G.; Goldberg W. J. C6 glioma-astrocytoma cell and fetal astrocyte migration into artificial basement membrane: a permissive substrate for neural tumors but not fetal astrocytes. *Neurosurgery* 1991 may; 28(5): 652-8.
- Boden S. D.; Wiesel S. W. Lumbosacral segmental motion in normal individuals have we been measuring instability properly? *Spine* 1990; 15(6): 571-576.
- Burin G. J. Al-Ghaith, L.K Anitole, K.G. Barber, M.K Brown, K.M. Investigation of the developmental toxicity of cocaine in in-vitro cultured chick embryos correlation of effects with intra embryonic drug levels. *Toxicol in vitro* 1991; 5(4): P. 285-294.
- Cheng T. O. Therapeutic implications of diastolic dysfunction in heart failure. *Postgrad med j* 1991; 67(788): 588.
- Curtis D. J. Defecography. IN: Smith, L. E., Ed. *Practical guide to anorectal testing*. New York: Jgaku-Shoin; 1990: 113-126. RC866.D43P73 1990.
- Curtis D. J. Normal and abnormal swallowing. IN: DelBalso, A. M., Ed. *Maxillofacial imaging*. Philadelphia: Saunders; c1990: 735-750. RD566.M37 1990.
- Decker C. F.; Simon G. L.; Digioia R. A.; Tuazon C. U. *Listeria monocytogenes* infections in patients with aids: report of five cases and review. *Rev-infect-dis* 1991 may-jun; 13(3): 413-7.
- Devaney K.; Kapur S. P.; Patterson K.; Chandra R. S. Pediatric renal artery dysplasia a morphologic study. *Pediatr pathol* 1991; 11(4): 609-622.
- Druy E. M. Renal tract intervention and genitourinary angiography. *Curr-opin-radiol* 1990 apr; 2(2): 266-73.
- Feinberg E. J.; Steinberg W. M.; Banks B. L.; Henry J. How long to abstain from eating red meat before fecal occult blood tests. *Ann intern med* 1990; 113(5): 403-404.
- Fitzpatrick S. B.; Fujii C.; Shragg G.; Rice L.; Et Al. Do health care needs of indigent mexican-american, black, and white adolescents differ? *Journal of adolescent health care* 1990; 11(2): 128-132.
- Freedman A. M.; Atrakchi A. H.; Cassidy M. M.; Weglicki W. B. Magnesium deficiency-induced cardiomyopathy protection by vitamin e. *Biochem biophys res commun* 1990; 170(3): 1102-1106.
- Freedman A. M.; Cassidy M. M.; Weglicki W. B. Captopril protects against myocardial injury induced by magnesium deficiency. *Hypertension (dallas)* 1991; 18(2): 142-147.
- Gallagher J. V.; Rifai N.; Conry J.; Soldin S. J. Role of the clinical laboratory in evaluation of argininosuccinate lyase deficiency. *Clin chem* 1991; 37(8): 1384-1389.
- Geelhoed G. W. 'hand in glove': a centennial observation on the surgical use of rubber gloves. *South-med-j* 1991 aug; 84(8): 1012-7.
- Geelhoed G. W.; Burkitt D. P. Varicose veins: a reappraisal from a global perspective. *South-med-j* 1991 sep; 84(9): 1131-4.
- Gilbert T. B.; Shaffer M.; Matthews M. Electrical shock by dislodged spark gap in bipolar electrosurgical device. *Anesth-analg* 1991 sep; 73(3): 355-7.

Glass R. B.; Davidson A. J.; Fernbach S. K. Clear cell sarcoma of the kidney: ct, sonographic, and pathologic correlation. *Radiology* 1991 sep; 180(3): 715-7.

Golfo E. B.; Galindo L. M. Diagnosis of an unusual abdominal presentation of granuloma inguinale by fine needle aspiration cytology. *Acta cytol* 1990; 34(4): 570-572.

Hicks J. M. Mandated quality assurance does it benefit the patients. 43rd national meeting of the american association for clinical chemistry, inc., washington, d.c., usa, july 28-august 1, 1991. *clin chem* 1991; 37(6): 897-898.

Hollinshead A. Active Specific immunotherapy and immunochemotherapy in the treatment of lung and colon cancer. *Semin Surg Oncol* 1991; 7(4): P. 199-210.

Hollinshead A. Co-assessment of serum epitope antibodies, cell-mediated immunity and survival in colon cancer patients on TAA specific active immunotherapy. IN: Salomon, S. E., Ed. *Adjuvant therapy of cancer VI*. Philadelphia: Saunders; c1990: 454-468.

Holmstrom R. W.; Karp S. A.; Silber D. E. The apperceptive personality test and locus of control. *Psychol rep* 1991; 68(3 part 2): 1071-1074.

Hsia J.; Goldstein A. L.; Simon G. L.; Sztejn M.; Hayden F. G. Peripheral blood mononuclear cell interleukin-2 and interferon-gamma production cytotoxicity and antigen-stimulated blastogenesis during experimental rhinovirus infection. *J infect dis* 1990; 162(3): 591-597.

Huntington D. K.; Hill S. C.; Hill M. C. Sonographic manifestations of medical renal disease. *Semin ultrasound ct mr* 1991; 12(4): 290-307.

Hunting K. L.; Matanoski G. M.; Larson M.; Wolford R. Solvent exposure and the risk of slips trips and falls among painters. *Am j ind med* 1991; 20(3): 353-370.

John C. S.; Paik C. H.; Kinuya S.; McAfee J. G.; Neumann R. D.; Reba R. C. Synthesis and investigation of gallium pat as potential myocardial imaging agents. *J nucl med* 1991; 32(5 suppl): 1090-1091.

Johnson D. L. Management of choroid plexus tumors in children. *Pediatr neurosci* 1989; 15(4): 195-206.

Kafka J. S. On the question of insight in psychosis. Special issue: psychoanalysis and severe emotional illness. *Journal of the american academy of psychoanalysis* 1990; 18(1): 18-28.

Kessler C. M. Modern treatment of pulmonary embolism. *Lung* 1990; 168(Suppl): 841-848.

Kimmel P. L.; Bosch J. P. Effectiveness of renal fellowship training for subsequent clinical practice. *Am-j-kidney-dis* 1991 aug; 18(2): 249-56.

Kingsbury D. T. Regulation of biotechnology a perspective on the us coordinated framework. In: Mooney, H. A.; G. Bernardi (ed.). *Scope (scientific committee of problems on the environment)*, 44. 1990; : 161-166.

Kirsch T.; Shesser R. A survey of emergency department communicable disease reporting practices. *J-emerg-med* 1991 jul-aug; 9(4): 211-4.

Letterman G. A history of the treatment of sagging breast (Mastopexy). IN: Georgiade, N. G.; Gregoriade, G. S.; Riefkohl, R., Eds. *Aesthetic surgery of the breast*. Philadelphia: Saunders; 1990: 531-537. RD539.8.A37 1990.

Letterman G. Maxime Schurter, a history of augmentation mammoplasty. IN: Georgiade, N. G.; Gregoriade, G. S.; Riefkohl, R., Eds. *Aesthetic surgery of the breast*. Philadelphia: Saunders; 1990: 41-48. RD539.8.A37 1990.

Lew J. F.; Wiedermann B. L.; Sneed J.; Campos J.; McCullough D. Aerotolerant clostridium-tertium brain abscess following a lawn dart injury. *J clin microbiol* 1990; 28(9): 2127-2129.

Lipsius S. H. Combined individual and group psychotherapy: guidelines at the interface. *Int-j-group-psychother* 1991 jul; 41(3): 313-27.

Mak I. T.; Kramer J. H.; Freedman A. M.; Tse S. Y. H.; Weglicki W. B. Oxygen radical-mediated injury of myocytes protection by propranolol. *J mol cell cardiol* 1990; 22(6): 687-696.

Manyak M. J.; Nelson L. M.; Solomon D.; Degraff W.; Stillmann R. J.; Russo A. Fluorescent detection of rabbit endometrial implants resulting from monodispersed viable cell suspensions. *Fertil steril* 1990; 54(2): 356-359.

Mcgowan L. Pathology of the ovary. *Curr-opin-obstet-gynecol* 1991 aug; 3(4): 580-6.



- McGrath B. Infection. IN: Cheng, E. Y.; Kay, J., Eds. Manual of anesthesia and the medically compromised patient. Philadelphia: Lippincott; c1990: 509-536. RD81.M33 1990.
- McIlveen L. P. Pediatric behavior management: the dental assistant's role. Dent-assist 1991 mar-apr; 60(2): 11-4.
- Moini M.; Abramson F. P. A moving belt device to couple high-performance liquid chromatography and chemical reaction interface mass spectrometry. Biol-mass-spectrom 1991 may; 20(5): 308-12.
- Neviaser T. J. Weight lifting. Risks and injuries to the shoulder. Clin-sports-med 1991 jul; 10(3): 615-21.
- Noonan F. P.; Reilly S. K.; Hoffman H.; De Fabo E. C. Susceptibility to uvb-induced immune suppression effect of genetic factors and of diet. Photochem photobiol 1991; 53(Suppl): 89s-90s.
- Nylen E. S.; Snider R. H.; Moore C. F.; Becker K. L. Modulation of pulmonary bombesin by nicotine and vagotomy. Life sci 1990; 47(3): 213-218.
- Patel R. I.; Hannallah R. S.; Norden J.; Casey W. F.; Verghese S. T. Emergence airway complications in children: a comparison of tracheal extubation in awake and deeply anesthetized patients. Anesth-analg 1991 sep; 73(3): 266-70.
- Petralia R. S.; Gill S. S.; Peusner K. D. Ultrastructural evidence that early synapse formation on central vestibular sensory neurons is independent of peripheral vestibular influences. J comp neurol 1991; 310(1): 68-81.
- Petralia R. S.; Peusner K. D. The earliest ultrastructural development of the tangential vestibular nucleus in the chick embryo. J comp neurol 1991; 310(1): 82-93.
- Phillips T. M. Isolation of an interleukin 2-binding receptor from activated lymphocytes by high-performance immunoaffinity chromatography. J chromatogr 1991; 550(1-2): 741-750.
- Pigman E. C. Acute mountain sickness effects and implications for exercise at intermediate altitudes. Sports med 1991; 12(2): 71-79.
- Pigman E. C.; Shepherd S. M. Cervical anterior spinal artery syndrome associated with cardiopulmonary arrest. Am-j-emerg-med 1991 sep; 9(5): 452-4.
- Pranzatelli M. R. Regulation of 5-HT<sub>2</sub> receptors in rat cortex studies with a putative selective agonist and an antagonist. Biochem pharmacol 1991; 42(5): 1099-1106.
- Pranzatelli M. R.; Albin R. L.; Cohen B. H. Acute dyskinesias in young asthmatics treated with theophylline. Pediatr-neurol 1991 may-jun; 7(3): 216-9.
- Pranzatelli M. R.; Pluchino R. S. The relation of central 5-HT<sub>1A</sub> and 5-HT<sub>2</sub> receptors low dose agonist-induced selective tolerance in the rat. Pharmacol biochem behav 1991; 39(2): 407-414.
- Principato J. J. Upper airway obstruction and craniofacial morphology. Otolaryngol-head-neck-surg 1991 jun; 104(6): 881-90.
- Reilly S. K.; De Fabo E. C. Dietary histidine increases mouse skin urocanic acid levels and enhances uvb-induced immune suppression of contact hypersensitivity. Photochem-photobiol 1991 apr; 53(4): 431-8.
- Reiss D.; Oliveri M. E. The family's conception of accountability and competence: a new approach to the conceptualization and assessment of family stress. Fam-process 1991 jun; 30(2): 193-214.
- Roberson S. K.; Joseph S. H. Eczematous rash and splenomegaly. Ann allergy 1990; 65(2): 93-96.
- Roberts I. M.; Solomon S. E.; Brusco O. A.; Goldberg W.; Bernstein J. J. Neuromodulators of the lingual von Ebner gland: an immunocytochemical study. Histochemistry 1991; 96(2): 153-156.
- Rohrbeck Cynthia A.; Azar Sandra T.; Wagner Patricia E. Child self-control rating scale: validation of a child self-report measure. Journal of clinical child psychology 1991 jun vol 20(2): 179-183.
- Rushton C. H. Family-centered care in the critical care setting: myth or reality? Children's health care 1990; 19(2): 68-78.
- Salzman C.; Tuazon C. U.; Labriola A. M.; Aaron B. L.; Gooch W. Serum and atrial tissue concentrations of cefonicid and cefamandole in patients undergoing coronary artery bypass graft surgery. J antimicrob chemother 1990; 26(2): 292-294.

Sandin R. L.; Rodriguez E. R.; Rosenberg E.; Porter Jordan K.; Caparas M.; Nasim S.; Rockis M.; Keiser J. F.; Garrett C. T. Comparison of sensitivity for human cytomegalovirus of the polymerase chain reaction, traditional tube culture and shell vial assay by sequential dilutions of infected cell lines. *J-virol-methods* 1991 may; 32(2-3): 181-91.

Schonholtz G. J. Complications of arthroscopic surgery of the ankle. IN: Sherman, O. H.; Minkoff, J., Eds. *Arthroscopic surgery*. Baltimore: Williams & Wilkins; c1990: 202-215. RD686.A762 1990.

Schwartz R. H. Nasopharyngitis. IN: Gellis, S. S.; Kagan, B. M., Eds. *Current Pediatric therapy*. Philadelphia: Saunders; 1990: 104-105. RJ52.C8 1990.

Shesser R.; Jotte R.; Olshaker J. The contribution of impurities to the acute morbidity of illegal drug use. *Am j emerg med* 1991; 9(4): 336-342.

Shesser R.; Stephen J. Disorders of calcium and magnesium metabolism. IN: Wolfson, A. B., Ed. *Endocrine and metabolic emergencies*. New York: Churchill Livingstone; c1990: 45-66. RC627.54.E53 1990.

Sly R. M. Asthma. IN: Gellis, S. S.; Kagan, B. M., Eds. *Current Pediatric therapy*. Philadelphia: Saunders; 1990: 602-609. RJ52.C8 1990.

Smith L. E. Algorithm for constipation. IN: Smith, L. E., Ed. *Practical guide to anorectal testing*. New York: Jgaku-Shoin; 1990: 209-224. RC866.D43P73 1990.

Sotsky S. M.; Glass D. R.; Shea M. T.; Pilkonis P. A.; Collins J. F.; Elkin I.; Watkins J. T.; Imber S. D.; Leber W. R.; Et Al. Patient predictors of response to psychotherapy and pharmacotherapy findings in the nimh treatment of depression collaborative research program. *Am j Psychiatry and Behavioral Sciences* 1991; 148(8): 997-1008.

Teimourian B. Congenital anomalies of the nipple and areola. IN: Georgiade, N. G.; Gregoriade, G. S.; Riefkohl, R., Eds. *Aesthetic surgery of the breast*. Philadelphia: Saunders; 1990: 607-635. RD539.8.A37 1990.

Teno J.; Lynn J. Voluntary active euthanasia the individual case and public policy. *J am geriatr soc* 1991; 39(8): 827-830.

Tse S. Y.; Mak I. T.; Dickens B. F. Antioxidative properties of harmaline and beta-carboline alkaloids. *Biochem-pharmacol* 1991 jul 15; 42(3): 459-64.

Vanderhoek, J. Y., Ed. *Biology of cellular transducing signals*. New York: Plenum Press; c1990: P517.C45I58 1989.

Vanderhoek J. Y.; Schoene N. W.; Pham P. P. T. Inhibitory potencies of fish oil hydroxy fatty acids on cellular lipoxygenases and platelet aggregation. *Biochem pharmacol* 1991; 42(4): 959-962.

Velasquez M. T.; Kimmel L.; Michaelis O. E. IV. Animal models of spontaneous diabetic kidney disease. *Faseb (fed am soc exbiol) j* 1990; 4(11): 2850-2859.

Vonakis B. M.; Vanderhoek J. Y. A calcium-independent 5 lipoxygenase system in mast-basophil pt-18 cells. *Biochim biophys acta* 1990; 1045(2): 142-146.

Welch L. S.; Plotkin E.; Schrader S. Indirect fertility analysis in painters exposed to ethylene glycol ethers sensitivity and specificity. *Am j ind med* 1991; 20(2): 229-240.

Williams J. R. Immunologic. IN: Cheng, Y. E.; Kay, J., Eds. *Manual of anesthesia and the medically compromised patient*. Philadelphia: Lippincott; c1990: 541-557. RD81.M33 1990.

Wolf S. I. Rehabilitation of asthmatic patients. Motivating your patients to improve their life-style. *Postgrad-med* 1991 sep 1; 90(3): 93-6.

Wolfe M. S. Travel medicine and travel clinics. *Infect-dis-clin-north-am* 1991 jun; 5(2): 377-91.

# LIBRARY HOURS

Friday, December 20  
Saturday-Sunday, December 21-22  
Monday-Tuesday, December 23-24  
Wednesday, December 25  
Thursday, December 26  
Friday, December 27  
Saturday-Sunday, December 28-29  
Monday, December 30  
Tuesday, December 31  
Wednesday, January 1  
Thursday-Friday, January 2-3  
Saturday-Sunday, January 4-5  
Monday, January 6

## Library

7:30am-10:00pm  
10:00am-10:00pm  
7:30am-5:00pm  
-----CLOSED-----  
-----CLOSED-----  
7:30am-5:00pm  
10:00am-6:00pm  
7:30am-5:00pm  
-----CLOSED-----  
-----CLOSED-----  
7:30am-5:00pm  
10:00am-6:00pm

## AVSC

7:30am-6:00pm  
10:00am-6:00pm  
7:30am-5:00pm  
-----CLOSED-----  
-----CLOSED-----  
7:30am-5:00pm  
10:00am-6:00pm  
7:30am-5:00pm  
-----CLOSED-----  
-----CLOSED-----  
7:30am-5:00pm  
10:00am-6:00pm

**RESUME REGULAR SCHEDULE**

Himmelfarb Health Sciences Library  
2300 Eye Street N.W.  
Washington, D.C. 20037