

# Being the Inspiration: Seizing the FOSCE Opportunity

Alexandra Gomes MLS, MT, AHIP & Tom Harrod MLS  
Himmelfarb Health Sciences Library, The George Washington University



## Background:

The launch of the revised medical school curriculum in Fall 2014 provided new opportunities for librarians to collaborate with clinical faculty. As a result of our past informatics instruction embedded in the first year curriculum, we were invited to expand this content as part of a new Formative Objective Structured Clinical Examination (FOSCE) initiative.

## Developing the Cases:

- For MS1s: 5 cases over 10 months
- Developed for use with small groups of students (12 or 16)
- Collaboration with multiple faculty members to develop cases/scenarios
- Cases were block and week-specific, created to match content in other courses
- Lots of active learning including standardized patients and real-time research

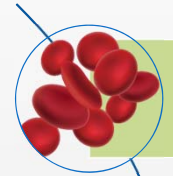
## Facilitating the Cases:

- Taught in small groups by two librarians
- 1/2 of group goes to 'Librarian Instructor-Led Exercise' while other 1/2 does 'Standardized Patient Encounters with CSRLs' (Clinical Skills and Reasoning Instructors) and they switch after 50 minutes
- Required librarian prep sessions prior to each case to introduce the material/format to those librarians who would be facilitating the sessions



## Lessons Learned:

- One librarian is enough to teach the session
- Remain flexible; many sessions finished development just before they were introduced to the librarian instructors
- Faculty are open to proposed curricula and collaboration, especially when it solves one of their problems.
- Faculty now have an enlarged perspective of librarians as curriculum developers and fellow instructional faculty
- Success leads to greater involvement:
  - New sessions requested for MS2 curriculum
  - Led to development of librarian-created presentation curriculum to be taught in academic year 2015-2016
  - Led to more successful negotiations for placement of informatics sessions in MS1 year
- This activity created a new leadership role for some of our librarians



### I3 FOSCE: Anemia

- Create a genogram for newlyweds who have a family history of sickle cell disease
- Draw out a Punnett square from the genograms showing the likelihood that their child would have sickle cell disease / sickle cell trait



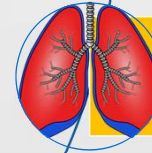
### I3 FOSCE: Fever

- Interview a standardized patient who presents with fever.
- Determine her recent travel history and use several commonly-available travel health websites to help determine a proper diagnosis.



### CPR FOSCE: Chest Pain

- Read presentation and lab results for a patient with classic characteristics of heart disease
- Use CVD calculators to determine likelihood of major CVD event and discover ways of lowering his risk



### CPR FOSCE: Dyspnea

- Interview a standardized patient who presents with shortness of breath.
- Choose appropriate tests and look up information on various exposures the patient mentions (pet, chemical, etc.)



### GI/Liver FOSCE: Abdominal Pain

- Interview standardized patient who presents as mother of a girl who has swallowed some pills.
- From photos, use drug resources to ID different pills that may have been ingested to determine likelihood of their being the cause

## Take Home Message:

- Be open to opportunities
- Seek to find solutions (for yourself and others!) and opportunities
- Be proactive; seize the moment
- Propose a solution to a problem that develops on the fly
- Envision yourself in new roles
- Opportunities often arise during periods of great change