

**Himmelfarb Health Sciences Library, The George Washington University  
Health Sciences Research Commons**

---

Information Interface (1999 - 2009)

Himmelfarb Health Sciences Library

---

1-2008

Information Interface - Volume 36, Issue 1 -  
January/February 2008

George Washington University, Himmelfarb Health Sciences Library

Follow this and additional works at: <https://hsrc.himmelfarb.gwu.edu/ii>

 Part of the [Library and Information Science Commons](#), and the [Medicine and Health Sciences Commons](#)

---

**Recommended Citation**

George Washington University, Himmelfarb Health Sciences Library, "Information Interface - Volume 36, Issue 1 - January/February 2008" (2008). *Information Interface (1999 - 2009)*. Paper 34.  
<https://hsrc.himmelfarb.gwu.edu/ii/34>

This Newsletter is brought to you for free and open access by the Himmelfarb Health Sciences Library at Health Sciences Research Commons. It has been accepted for inclusion in Information Interface (1999 - 2009) by an authorized administrator of Health Sciences Research Commons. For more information, please contact [hsrc@gwu.edu](mailto:hsrc@gwu.edu).

# Himmelfarb Health Sciences Library



[Home](#) [About](#) [Site Map](#) [? Ask Us](#)

## Information Interface

Office of Educational Resources  
School of Medicine and Health Care Sciences  
School of Public Health and Health Services

January/February 2008

Volume 36/Issue 1

### Director's Desk

Best wishes for 2008! The staff of the Himmelfarb Health Sciences Library looks forward to working with you in the upcoming year. Our facility has been refreshed with new paint and carpeting. New, faster copiers have been installed. Several new and exciting projects are underway.

In conjunction with the Dahlgren Memorial Library at Georgetown University, Himmelfarb Library was recently awarded a grant to initiate the "Healthy DC - GoLocal" project. The two libraries, with the assistance of the District of Columbia Association of Health Sciences Libraries, will create a database that links the health information in MEDLINEplus to local health services. Go to

<http://www.nlm.nih.gov/medlineplus/golocal/> to see how the project has worked in other localities. Contact Elaine Sullo ([mlbejs@gwumc.edu](mailto:mlbejs@gwumc.edu)) for additional information.

As we move into our second year of a nearly all-electronic collection, plans are underway to assist faculty and researchers with using the collection through on-site visits to promote the customized electronic delivery of information through RSS feeds and alerts services. Contact Laura Abate ([mlblea@gwumc.edu](mailto:mlblea@gwumc.edu)) to schedule a visit.

Also, be sure to check out our expanded list of classes for the spring at: [/courses](#).

Best wishes for a successful year!  
Anne Linton, Director, Library Services



### Inside this issue...

[Information Interface Home](#)

[Director's Desk](#)

[Dr. Shelley Bader Retires](#)

[Library Welcomes New Staff](#)

[Improved Wireless and Off-campus Access](#)

[Himmelfarb Library Journal Changes](#)

[Public Health Titles](#)

[Library Closing](#)

[Health Observance Corner](#)

[Database Digest](#)

[Savvy Searcher](#)

[Class Calendar](#)

[Faculty Publications](#)

[Library Hours](#)

# Himmelfarb Health Sciences Library



[Home](#) [About](#) [Site Map](#) [? Ask Us](#)

## Information Interface

Office of Educational Resources  
School of Medicine and Health Care Sciences  
School of Public Health and Health Services

January/February 2008

Volume 36/Issue 1

### Dr. Shelley Bader retires after 36 years

After more than 36 years of dedicated service to The George Washington University, Dr. Shelley Bader has announced her retirement effective January 2008. Dr. Bader first arrived at Himmelfarb as a librarian and later served as Director of the Himmelfarb Health Sciences Library. More recently, she has served as an Assistant and Associate Vice President for Educational Resources at the medical center.

During her tenure, Dr. Bader helped launch significant initiatives that have had a dramatic impact on the growth of the Himmelfarb Library and have led to major technological advances within Computer Applications and Support Services and Academic Computing Services. Upon retiring, Dr. Bader plans to consult on issues related to library and information services. She also will continue to teach as an adjunct faculty member with the Department of Health Services Management and Leadership and will author a book as part of a project celebrating the 35th anniversary of the Himmelfarb Library.

Provost and Vice President for Health Affairs Dr. John F. Williams recalled, "I first met Dr. Bader when I was a resident at GW. It is hard to imagine the Medical Center without her here. Shelley has never wavered in her advocacy on behalf of students, faculty and staff, and she has initiated or implemented many programs that advanced their work, whether it was in their academic studies, research pursuits or clinical care. We are going to miss Shelley and truly appreciate all she has done to help the Medical Center advance to the next level. We value her many years and congratulate her on her retirement."

Please join the entire Himmelfarb Health Sciences Library staff in wishing Dr. Bader the very best in the next phase of her career.



### Inside this issue...

[Information Interface Home](#)

[Director's Desk](#)

[Dr. Shelley Bader Retires](#)

[Library Welcomes New Staff](#)

[Improved Wireless and Off-campus Access](#)

[Himmelfarb Library Journal Changes](#)

[Public Health Titles](#)

[Library Closing](#)

[Health Observance Corner](#)

[Database Digest](#)

[Savvy Searcher](#)

[Class Calendar](#)

[Faculty Publications](#)

[Library Hours](#)

# Himmelfarb Health Sciences Library



[Home](#) [About](#) [Site Map](#) [? Ask Us](#)

## Information Interface

Office of Educational Resources  
School of Medicine and Health Care Sciences  
School of Public Health and Health Services

January/February 2008

Volume 36/Issue 1

### Library Welcomes New Staff and Highlights Staff in New Positions

#### Jennifer McDaniel



Hello! My name is Jennifer McDaniel and I am the new cataloging/reserves specialist at Himmelfarb Library

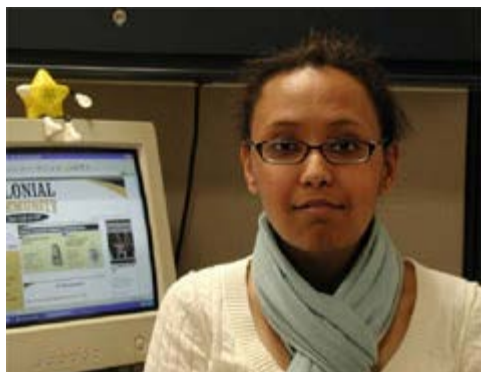
I will be working with course reserves and assisting with adding new books to the collection.

I am originally from Alberta and moved to Virginia just over 2 years ago after completing my bachelor's degree in biology at Mount Saint Vincent University. During my time at the

Mount, I had the privilege of working at the university library and enjoyed helping students and faculty get the information they needed.

I am excited to be a part of the Himmelfarb Library community and look forward to working with you. I can be reached at 202-994-1847 or [mlbjam@gwumc.edu](mailto:mlbjam@gwumc.edu).

#### Semhar Yohannes



We are pleased to have a new Library Assistant at the Circulation Desk. Her name is Semhar Yohannes and she comes to us from McDaniel College in Westminster Maryland, where she majored in psychology and minored in women's studies.

Semhar hopes to attend library school at Catholic University, and feels this position will give her valuable experience.

Semhar works Tuesdays through Saturdays, and looks forward to meeting all the frequent and new faces.

#### Hasna Ross

After two years working at Himmelfarb Library as a cataloging specialist, I changed positions to become the new Interlibrary Loan Specialist in October 2007.

#### Inside this issue...

[Information Interface Home](#)

[Director's Desk](#)

[Dr. Shelley Bader Retires](#)

[Library Welcomes New Staff](#)

[Improved Wireless and Off-campus Access](#)

[Himmelfarb Library Journal Changes](#)

[Public Health Titles](#)

[Library Closing](#)

[Health Observance Corner](#)

[Database Digest](#)

[Savvy Searcher](#)

[Class Calendar](#)

[Faculty Publications](#)

[Library Hours](#)



In my previous position, I had the opportunity to work with faculty, teaching assistants and students for services related to print and AV Reserves as well as E-Reserves. In my present position, I will continue to interact with the medical center community for interlibrary loan and document delivery services.

Prior to Himmelfarb Library, I worked in Morocco in the library of the French Cultural Institute and the library of the American Language Center. I also worked for the Ministry of Finance and Privatization of Morocco for more than four years and also worked as a part-time web designer for the Jacques Berque Center, a research center in Social and Human Sciences which is affiliated to the embassy of France in Morocco. I am looking forward to working with library users. I can be reached at 202-994-3860 and by email at [mlbhsr@gwumc.edu](mailto:mlbhsr@gwumc.edu).



[Comments](#) | [About](#) | [Intranet](#) | [SMHS](#) | [SoN](#) | [GWSPH](#) | [GWU](#)

Himmelfarb Health Sciences Library | The George Washington University  
2300 Eye St., NW, Washington, DC 20037 | Phone: (202) 994-2850 | Fax: (202) 994-4343

# Himmelfarb Health Sciences Library



[Home](#) [About](#) [Site Map](#) [? Ask Us](#)

## Information Interface

Office of Educational Resources  
School of Medicine and Health Care Sciences  
School of Public Health and Health Services

January/February 2008

Volume 36/Issue 1

### Improved Wireless and Off-campus Access (Also For Vista Users!)

We are happy to announce that GWU has a new web-based program for both on-campus wireless access and off-campus/remote access to Himmelfarb's electronic journals, databases, and books. The GWireless/VPN program is compatible with all operating systems, including Windows Vista and Mac OS, is easy to use, and does not require a download.

Here are the instructions:

1. Turn off your internet browser's pop-up block or update settings to permit pop-ups from gwu.edu (allowing pop-ups for this site is necessary to login).
  2. Go to <http://vpn.gwu.edu>
  3. Login to GWireless with your GW NetID and password (the same login/password that you use for your @gwu.edu email).
  4. Enter your computer's password or click OK to allow the software to run.
- Go to Himmelfarb's website - /. You can now access databases, e-texts, and e-journals without any additional logins.

That's all there is to it, but if you do have trouble...

Students can contact Student Technology Services at 202-994-7041 or [sts@gwu.edu](mailto:sts@gwu.edu).

Faculty and Staff can contact the GW Help Desk at 202-994-5530 option 2 or [ithelp@gwu.edu](mailto:ithelp@gwu.edu).



### Inside this issue...

[Information Interface Home](#)

[Director's Desk](#)

[Dr. Shelley Bader Retires](#)

[Library Welcomes New Staff](#)

[Improved Wireless and Off-campus Access](#)

[Himmelfarb Library Journal Changes](#)

[Public Health Titles](#)

[Library Closing](#)

[Health Observance Corner](#)

[Database Digest](#)

[Savvy Searcher](#)

[Class Calendar](#)

[Faculty Publications](#)

[Library Hours](#)

# Himmelfarb Health Sciences Library



[Home](#) [About](#) [Site Map](#) [? Ask Us](#)

## Information Interface

Office of Educational Resources  
 School of Medicine and Health Care Sciences  
 School of Public Health and Health Services

January/February 2008

Volume 36/Issue 1

### Himmelfarb Library Journal Changes

Though the major shift to a primarily electronic journal collection was largely completed with the 2007 subscription year, improvements to the journal collection will continue in 2008.

### Additions to the Journal Collection

Listed below are 68 journals added to Himmelfarb Library's electronic journals collection for the 2008 subscription year. Many of these additions were made upon the request of GWUMC faculty and residents. To suggest an addition to the Himmelfarb Library journal collection, please contact Betsy Appleton at 994-9756 or [mlbeaa@gwumc.edu](mailto:mlbeaa@gwumc.edu).

- |   |   |
|---|---|
| <i>Acta Biochimica et Biophysica Sinica</i>       | <i>Heart Rhythm</i>                                   |
| <i>Acta Neuropsychiatrica</i>                     | <i>Hemodialysis International</i>                     |
| <i>Alimentary Pharmacology &amp; Therapeutics</i> | <i>Imaging Decisions MRI</i>                          |
| <i>Symposium Series</i>                           | <i>International Journal of Immunogenetics</i>        |
| <i>Anatomical Science International</i>           | <i>International Journal of Laboratory Hematology</i> |
| <i>Animal Science Journal</i>                     | <i>JDDG</i>   |
| <i>Annals of Applied Biology</i>                  | <i>Journal of Digestive Diseases</i>                  |
| <i>Annals of Noninvasive Electrocardiology</i>    | <i>Journal of Food Biochemistry</i>                   |
| <i>APLAR Journal of Rheumatology</i>              | <i>Journal of Food Lipids</i>                         |
| <i>Australasian Journal on Ageing</i>             | <i>Journal of Food Process Engineering</i>            |
| <i>Australian Occupational Therapy Journal</i>    | <i>Journal of Food Processing &amp; Preservation</i>  |
| <i>Biosecurity and Bioterrorism</i>               | <i>Journal of Food Quality</i>                        |
| <i>Biotropica</i>                                 | <i>Journal of Food Safety</i>                         |
| <i>Brain Pathology</i>                            | <i>Journal of Food Science</i>                        |
| <i>Child and Adolescent Mental Health</i>         | <i>Journal of Food Science Education</i>              |
| <i>Child: Care, Health and Development</i>        | <i>Journal of Forensic Sciences</i>                   |
| <i>Children &amp; Society</i>                     | <i>Journal of Phytopathology</i>                      |
| <i>Clinical and Experimental Ophthalmology</i>    | <i>Journal of Rural Health, The Layers</i>            |
| <i>Clinical Psychology: Science and Practice</i>  | <i>Mammal Review</i>                                  |
| <i>Clinical Teacher, The</i>                      | <i>Neuromodulation</i>                                |
| <i>Congenital Anomalies</i>                       | <i>Neurourology and Urodynamics</i>                   |
| <i>Dermatologic Therapy</i>                       | <i>Nursing and Health Sciences</i>                    |
|   | <i>Nutrition &amp; Dietetics</i>                      |
|   | <i>Obesity Reviews</i>                                |
|   | <i>Oral Diseases</i>                                  |

### Inside this issue...

[Information Interface Home](#)

[Director's Desk](#)

[Dr. Shelley Bader Retires](#)

[Library Welcomes New Staff](#)

[Improved Wireless and Off-campus Access](#)

[Himmelfarb Library Journal Changes](#)

[Public Health Titles](#)

[Library Closing](#)

[Health Observance Corner](#)

[Database Digest](#)

[Savvy Searcher](#)

[Class Calendar](#)

[Faculty Publications](#)

[Library Hours](#)

<i>Digestive Endoscopy</i>	<i>Oral Microbiology And Immunology</i>
<i>Emergency Medicine Australasia</i>	<i>Pain Practice</i>
<i>Evolution &amp; Development</i>	<i>Pediatric Diabetes</i>
<i>FEMS Immunology and Medical Microbiology</i>	<i>Pediatric Transplantation</i>
<i>FEMS Microbiology Ecology</i>	<i>Psychogeriatrics</i>
<i>FEMS Microbiology Letters</i>	<i>Surgical Practice</i>
<i>FEMS Microbiology Reviews</i>	<i>Teaching and Learning in Medicine</i>
<i>FEMS Yeast Research</i>	<i>Therapeutic Apheresis and Dialysis</i>
<i>Geriatrics and Gerontology International</i>	<i>Transplant International</i>
<i>Health and Social Care in the Community</i>	<i>Value in Health</i>
	<i>Water and Environment Journal</i>

## Format Changes

Along with these new additions, another 23 journals that Himmelfarb subscribed to in print will be available electronically beginning in 2008:

<i>AJR:American Journal of Roentgenology</i>	<i>Journal of American College Health</i>
<i>American Journal of Clinical Pathology</i>	<i>Journal of Cardiovascular Surgery</i>
<i>American Surgeon</i>	<i>Journal of Chromatographic Science</i>
<i>Annals of Pharmacotherapy</i>	<i>Journal of Pain &amp; Palliative Care</i>
<i>Aviations Space and Environmental Medicine</i>	<i>Pharmacotherapy</i>
<i>Canadian Journal of Psychiatry</i>	<i>Medical Decision Making</i>
<i>Canadian Journal of Surgery</i>	<i>Medicine on the Net</i>
<i>Gynecologic and Obstetric Investigation</i>	<i>Physical and Occupational Therapy in Geriatrics</i>
<i>Health Education &amp; Behavior</i>	<i>Physical and Occupational Therapy in Pediatrics</i>
<i>Health Marketing Quarterly</i>	<i>Social Work in Health Care</i>
<i>Home Health Care Services Quarterly</i>	<i>Strength and Conditioning Journal</i>
<i>Hospitals &amp; Health Networks</i>	
<i>Journal of Addictive Diseases</i>	

All the above titles can be accessed online from [Himmelfarb Library's E-journals page](#) .

## Title Changes

The journals listed below will continue to be available in the Himmelfarb Journal Collection, but 2008 issues will be listed under the new titles:

Old Title	New Title
Acta Physiologica Scandinavica	Acta Physiologica
AWHONN Lifelines	Nursing for Women's Health
Pharmacology & Toxicology	Basic Pharmacology and Toxicology

Please note that older issues will still be available under the former title.

## Journal Cancellations and Cessations

Himmelfarb is pleased to announce no cancellations have been made for 2008. The three following journals ceased publication in 2007:

*Clinics in Occupational and Environmental Medicine*  
*FDA Consumer*  
*Comprehensive Therapy*



If you have any questions about the Himmelfarb Journal journal collection or need help accessing articles, contact Betsy Appleton at [mlbeaa@gwumc.edu](mailto:mlbeaa@gwumc.edu) or 994-9756.



[Comments](#) | [About](#) | [Intranet](#) | [SMHS](#) | [SoN](#) | [GWSPH](#) | [GWU](#)

Himmelfarb Health Sciences Library | The George Washington University  
2300 Eye St., NW, Washington, DC 20037 | Phone: (202) 994-2850 | Fax: (202) 994-4343

# Himmelfarb Health Sciences Library



[Home](#) [About](#) [Site Map](#) [? Ask Us](#)

## Information Interface

Office of Educational Resources  
School of Medicine and Health Care Sciences  
School of Public Health and Health Services

January/February 2008

Volume 36/Issue 1

### How to change health behavior?

#### Use Himmelfarb's book collection to discover how...

You can learn about changing health behavior by consulting Dr. Mark Edberg's new book *Essentials of Health Behavior* which was recently published by Jones and Bartlett Publishers and is available in Himmelfarb Library (Stacks and Reserves RA418 .E326 2007). Dr. Edberg, Associate Professor of Prevention and Community Health, provides background on the social and behavioral theories which underpin health promotion and health behavior interventions.

*Essentials of Health Behavior* is one of a number of new books which will interest public health faculty and students and which have been added to Himmelfarb Library in the past few months:

Aschengrau, Ann. *Essentials of Epidemiology in Public Health*. Sudbury, Mass: Jones and Bartlett Publishers. RA651 .A83 2008

Butterfoss, Frances D. *Coalitions and partnerships in community health*. San Francisco: Jossey-Bass. Location: Stacks RA427 .B95 2007

Edberg, Mark C. *Essentials of Public Health: Social and Behavioral Theory in Public Health*. Sudbury, Mass.: Jones and Bartlett Publishing. Location: Stacks & Reserve RA418 .E326 2007

Friis, Robert H. *Essentials of Environmental Health*. Sudbury, Mass.: Jones and Bartlett Publishers. Location: Stacks RA565 .F75 2007

Hill, Alison. *Public Health and Primary Care*. Oxford University Press. Oxford. RA425 .H45 2007

Jacobsen, Kathryn, H. *Introduction to Public Health*. Sudbury Mass.: Jones and Bartlett Publishers. RA441 .J33 2008

Levine, Ruth. *Case Studies in Global Health: Millions Saved*. Sudbury, Mass.: Jones and Bartlett Publishers. Location: Stacks RA441 .L48 2007

Lombardo, Joseph S. *Disease Surveillance: A Public Health Informatics Approach*. Hoboken, N.J.: Wiley-Interscience. Location: Stacks RA652.2 .P82 D57 2007

Macdonald, Theodore. *Basic Concepts in Statistics and Epidemiology*. Oxford: Radcliffe Publishing. RA409 .M33 2007

Siegel, Michael. *Marketing Public Health: Strategies to Promote Social Change*. Sudbury, Mass.: Jones and Bartlett. Location: Stacks RA427 .S53 2007

### Inside this issue...

[Information Interface Home](#)

[Director's Desk](#)

[Dr. Shelley Bader Retires](#)

[Library Welcomes New Staff](#)

[Improved Wireless and Off-campus Access](#)

[Himmelfarb Library Journal Changes](#)

[Public Health Titles](#)

[Library Closing](#)

[Health Observance Corner](#)

[Database Digest](#)

[Savvy Searcher](#)

[Class Calendar](#)

[Faculty Publications](#)

[Library Hours](#)

Skolnik, Richard L. Essentials of Global Health. Sudbury, Mass.: Jones and Bartlett.  
Location: Stacks RA441 .S56 2008

Spark, Arlene J. Nutrition in Public Health: Principles, Policies, and Practice. Boca Raton:  
CRC Press. TX360 .U6 S63 2007

Teitlebaum, Joel. Essentials of Health Policy and Law. Sudbury, Mass.: Jones and Barlett  
Publishers. Location: Stacks RA395 .A3 T45 2007

Veenema, Tenner. Disaster Nursing and Emergency Preparedness : for Chemical,  
Biological, and Radiological Terrorism and Other Hazards. New York: Springer. RT 108  
.D56 2007



[Comments](#) | [About](#) | [Intranet](#) | [SMHS](#) | [SoN](#) | [GWSPH](#) | [GWU](#)

Himmelfarb Health Sciences Library | The George Washington University  
2300 Eye St., NW, Washington, DC 20037 | Phone: (202) 994-2850 | Fax: (202) 994-4343

# Himmelfarb Health Sciences Library



[Home](#) [About](#) [Site Map](#) [? Ask Us](#)

## Information Interface

Office of Educational Resources  
School of Medicine and Health Care Sciences  
School of Public Health and Health Services

January/February 2008

Volume 36/Issue 1

### Library Closing

Himmelfarb Health Science Library hours are 7:30am-12midnight Monday through Friday, and 9am-12 midnight Saturday and Sunday. The library closes its doors promptly at 12 midnight every night. With that fact in mind, users staying until closing time need to pack up belongings and begin exiting the library by 11:55.

Automatic shutdown of all library computers will occur at 12am, sharp. Please make sure that you have finished your work by 11:55 and saved it to your own device. Computer memory is wiped out completely once shutdown occurs, and we are unable to get any work back for you.

The library is open to all George Washington University faculty, staff and students Monday through Friday, 7:30am-6pm. The third floor, Bloedorn Technology Center and all study rooms are only available to Medical Center affiliates at all times. After 6pm weekdays and for the duration of weekends, ONLY Medical Center-affiliated faculty, staff and students should be in the library. Random ID checks are conducted during these hours, and all non medical-center affiliates will be asked to leave.

The Himmelfarb Health Sciences Library staff would like to solicit your help and cooperation in observing these library rules. We value the time you spend in the library and appreciate your continued efforts to work with the rules.



### Inside this issue...

[Information Interface Home](#)

[Director's Desk](#)

[Dr. Shelley Bader Retires](#)

[Library Welcomes New Staff](#)

[Improved Wireless and Off-campus Access](#)

[Himmelfarb Library Journal Changes](#)

[Public Health Titles](#)

[Library Closing](#)

[Health Observance Corner](#)

[Database Digest](#)

[Savvy Searcher](#)

[Class Calender](#)

[Faculty Publications](#)

[Library Hours](#)

# Himmelfarb Health Sciences Library



[Home](#) [About](#) [Site Map](#) [? Ask Us](#)

## Information Interface

Office of Educational Resources  
School of Medicine and Health Care Sciences  
School of Public Health and Health Services

January/February 2008

Volume 36/Issue 1

### Health Observance Corner

#### January 2008

Thyroid Awareness Month  
American Association of  
Clinical  
Endocrinologies  
<http://www.thyroidawareness.org>

National Birth Defects  
Prevention Month  
March of Dimes Birth Defects  
Foundation  
<http://www.marchofdimes.com>

National Glaucoma  
Awareness Month  
Prevent Blindness America  
<http://www.preventblindness.org>

Cervical Health Awareness  
Month  
National Cervical Cancer  
Coalition (NCC) (NCC)  
<http://www.nccc-online.org/>

#### February 2008

American Heart Month  
American Heart Association  
<http://www.americanheart.org>  
National Children's Dental Health Month  
American Dental Association  
<http://www.ada.org/prof/events/featured/ncdhm.asp>

International Prenatal Infection Prevention  
Month  
Group B Strep International  
<http://www.groupbstrepinternational.org>

AMD/Low Vision Awareness Month  
Prevent Blindness America  
<http://www.preventblindness.org/>



### Inside this issue...

- [Information Interface Home](#)
- [Director's Desk](#)
- [Dr. Shelley Bader Retires](#)
- [Library Welcomes New Staff](#)
- [Improved Wireless and Off-campus Access](#)
- [Himmelfarb Library Journal Changes](#)
- [Public Health Titles](#)
- [Library Closing](#)
- [Health Observance Corner](#)**
- [Database Digest](#)
- [Savvy Searcher](#)
- [Class Calender](#)
- [Faculty Publications](#)
- [Library Hours](#)

# Himmelfarb Health Sciences Library

THE GEORGE  
WASHINGTON  
UNIVERSITY  
MEDICAL CENTER  
WASHINGTON DC

[Home](#) [About](#) [Site Map](#) [? Ask Us](#)

## Information Interface

Office of Educational Resources  
School of Medicine and Health Care Sciences  
School of Public Health and Health Services

January/February 2008

Volume 36/Issue 1

### Database Digest - Global Health

If you need to access global health information, and want a resource that includes records from 125 countries (65% of the world's 194 countries) in over 50 languages from a database with a global view of public health research, then the "definitive international public health database"-Global Health-is for you!

Typically, Global Health covers diseases pertinent to the global health workforce, and includes a range of topics from communicable diseases to tropical diseases to parasitic diseases and parasitology. In addition to information on diseases, the database covers a variety of topics from human nutrition and medical entomology to medicinal and poisonous plants. Similarly, the range of materials is diverse and runs the gamut from journal articles to books and 'grey literature'. The database, produced by CABI Publishing, has unique content not found in other databases. In fact, CABI estimates 40% of their content is unique and provides deep subject coverage of information related to human health and communicable diseases published since 1972.

Available to users through the library's E-Databases, Global Health can be searched using the familiar OVID interface, and provides subject-specific bibliographic information from English and foreign language journals, books, research reports, patents and standards, dissertations, conference proceedings, annual reports, developing country information, and other difficult-to-obtain materials.



### Inside this issue...

[Information Interface Home](#)

[Director's Desk](#)

[Dr. Shelley Bader Retires](#)

[Library Welcomes New Staff](#)

[Improved Wireless and Off-campus Access](#)

[Himmelfarb Library Journal Changes](#)

[Public Health Titles](#)

[Library Closing](#)

[Health Observance Corner](#)

[Database Digest](#)

[Savvy Searcher](#)

[Class Calendar](#)

[Faculty Publications](#)

[Library Hours](#)

# Himmelfarb Health Sciences Library



[Home](#) [About](#) [Site Map](#) [? Ask Us](#)

## Information Interface

Office of Educational Resources  
School of Medicine and Health Care Sciences  
School of Public Health and Health Services

January/February 2008

Volume 36/Issue 1

### Savvy Searcher - Ovid's New OvidSP Search Interface

Beginning in late December, faculty, staff, and students can use Ovid's new OvidSP interface to search **MEDLINE, CINAHL, PsycINFO, Global Health, AMED, International Pharmaceutical Abstracts, SPORTDiscus, and Ovid's EBM databases.**

OvidSP was designed for speed, simplicity, and precision. OvidSP harnesses Ovid's sophisticated search functionality and incorporates features and tools to give you a simplified, streamlined search experience.

OvidSP includes:

- › Simplified, intuitive interface including multiple search modes, natural language searching, and a clean intuitive design.
- › Powerful, trusted precision search technology including advanced search functionality, simultaneous searching across all content types, and fast, flexible results management.
- › Enhanced research workflow tools including search refinement tools, inline abstracts, annotations, content updates delivered via RSS or email, sortable search results, Search Results Manager feature, find Similar Articles feature, and de-duplication of multi-file results.

The OvidSP interface offers multiple search modes so that users can select a searching method according to personal preference and information need. Using tabs, searches can move easily between search modes:

- › Basic - Geared to novice or occasional searchers, Basic searching mode allows you to enter queries using free text (e.g. everyday language) and ranks results by relevancy.
- › Ovid Syntax - Geared to frequent and long-time Ovid searches, this searching mode supports Boolean search terms and traditional Ovid Gateway command line syntax searching.
- › Find Citation - Geared to users who need a quick match and already know at least part of a bibliographic citation.
- › Search Tools - Allows users to access specific tools, such as trees, permuted index, scope notes, explode, and more to find information.
- › Search Fields - Searches by specific field(s) to permit searching of abstracts, author name, ISSN, and other criteria.

Himmelfarb Library has customized the OvidSP interface so that users will first see the familiar Ovid search interface including MeSH term mapping and standard limits (Full Text, English, Local Holdings, etc.). Users who want to use one of the new search modes can access these features using tabs.

For more information on OvidSP, please consult:

### Inside this issue...

[Information Interface Home](#)

[Director's Desk](#)

[Dr. Shelley Bader Retires](#)

[Library Welcomes New Staff](#)

[Improved Wireless and Off-campus Access](#)

[Himmelfarb Library Journal Changes](#)

[Public Health Titles](#)

[Library Closing](#)

[Health Observance Corner](#)

[Database Digest](#)

[Savvy Searcher](#)

[Class Calendar](#)

[Faculty Publications](#)

[Library Hours](#)

- > OvidSP Interactive demo  
[http://www.ovid.com/media/OvidSP\\_flash/player.html?  
utm\\_source=ovidsp\\_flash\\_demo&utm\\_medium=ovidsp\\_product\\_page](http://www.ovid.com/media/OvidSP_flash/player.html?utm_source=ovidsp_flash_demo&utm_medium=ovidsp_product_page)
- > OvidSP Quick Reference Card  
[/tutorials/PDF/Ovidsp\\_qrc.pdf](/tutorials/PDF/Ovidsp_qrc.pdf)
- > OvidSP Fact Sheet  
[/tutorials/PDF/Ovidsp\\_factsheet.pdf](/tutorials/PDF/Ovidsp_factsheet.pdf)
- > OvidSP Frequently Asked Questions  
[/tutorials/PDF/Ovidsp\\_faq.pdf](/tutorials/PDF/Ovidsp_faq.pdf)

The screenshot displays the OvidSP search interface. At the top, it shows the Wolters Kluwer Health logo and the OvidSP title. Below the navigation bar, there are tabs for 'Basic Search', 'Find Citation', 'Search Tools', 'Search Fields', and 'Ovid Syntax'. The 'Basic Search' tab is active, showing a search input field with radio buttons for 'Keyword', 'Author', 'Title', and 'Journal'. There is also a checkbox for 'Map Term to Subject Heading'. Below the search field, there are 'Limits' options with checkboxes for 'Full Text', 'Review Articles', 'Abstracts', 'English Language', 'Local Holdings', and 'Humans'. A 'Publication Year' range selector is also present. At the bottom, there is a 'Search History' section with a table showing search details and a 'View Saved' button.

#	Searches	Results	Display
-	-	-	-



[Comments](#) | [About](#) | [Intranet](#) | [SMHS](#) | [SoN](#) | [GWSPH](#) | [GWU](#)

Himmelfarb Health Sciences Library | The George Washington University  
2300 Eye St., NW, Washington, DC 20037 | Phone: (202) 994-2850 | Fax: (202) 994-4343



# Himmelfarb Health Sciences Library



[Home](#) [About](#) [Site Map](#) [? Ask Us](#)

## Information Interface

Office of Educational Resources  
School of Medicine and Health Care Sciences  
School of Public Health and Health Services

January/February 2008

Volume 36/Issue 1

### Faculty Publications

The George Washington University Medical Center  
Compiled by the Himmelfarb Health Sciences Library from MEDLINE,  
and other sources through mid October 2007.

Abdallah, C., R. Hannallah, et al. (2007). "Anesthesia for fucosidosis." [Pediatric Anesthesia](#) **17**(10): 994-997.

Adamson, P. C., K. K. Matthay, et al. (2007). "A phase 2 trial of all-trans-retinoic acid in combination with interferon-alpha 2A in children with recurrent neuroblastoma or Wilms tumor: A pediatric oncology branch, NCI and children's oncology group study." [Pediatric Blood & Cancer](#) **49**(5): 661-665.

Ammerman, J. M., P. Ben Kerr, et al. (2007). "Novel technique in intradural for the intraoperative monitoring of detrusor activity lesions of the cauda equina. Technical note." [Surgical Neurology](#) **68**(3): 269-271.

Ammerman, J. M., P. B. Kerr, et al. (2007). "A novel technique for the intraoperative monitoring of detrusor activity in intradural lesions of the cauda equina. Technical note." [Surgical Neurology](#) **68**(3): 269-71

Beebe, D. W., L. Krivitzky, et al. (2007). "Brief report: Parental report of sleep behaviors following moderate or severe pediatric traumatic brain injury." [Journal of Pediatric Psychology](#) **32**(7): 845-850.

Blake, S. M., R. Ledsky, et al. (2001). "Receipt of school health education and school health services among adolescent immigrants in Massachusetts." [Journal of School Health](#) **71**(3): 105-13.

Brem, R. F., I. Petrovitch, et al. (2007). "Breast-specific gamma imaging with 99mTc-Sestamibi and magnetic resonance imaging in the diagnosis of breast cancer--a comparative study." [Breast Journal](#) **13**(5): 465-9.

Bruzzi, C., A. Bader, et al. (2007). "Pathology teach and tell: fibrinogen storage disease in a child with hypofibrinogenemia and decreased ceruloplasmin." [Fetal & Pediatric Pathology](#) **26**(2): 101-5.

Buchanan, R. W., M. Davis, et al. (2005). "A summary of the FDA-NIMH-MATRICES workshop on clinical trial design for neurocognitive drugs for schiophrenia." [Schizophrenia Bulletin](#) **31**(1): 5-19.

Cary, J. W., G. R. Obrian, et al. (2007). "Elucidation of veA-dependent genes associated with aflatoxin and sclerotial production in *Aspergillus flavus* by functional genomics." [Applied Microbiology and Biotechnology](#) **76**(5): 1107-1118.

### Inside this issue...

[Information Interface Home](#)

[Director's Desk](#)

[Dr. Shelley Bader Retires](#)

[Library Welcomes New Staff](#)

[Improved Wireless and Off-campus Access](#)

[Himmelfarb Library Journal Changes](#)

[Public Health Titles](#)

[Library Closing](#)

[Health Observance Corner](#)

[Database Digest](#)

[Savvy Searcher](#)

[Class Calender](#)

[Faculty Publications](#)

[Library Hours](#)

- Cheng, T. O. (2007). "Cardiovascular effects of Danshen." International Journal of Cardiology **121**(1): 9-22.
- Clemmens, M. R. and L. Bell (2007). "Infant botulism presenting with poor feeding and lethargy: a review of 4 cases." Pediatric Emergency Care **23**(7): 492-4.
- Cohen, G. D., S. Perlstein, et al. (2006). "The impact of professionally conducted cultural programs on the physical health, mental health, and social functioning of older adults." Gerontologist **46**(6): 726-34.
- Cooper, J. K. (2007). "Treatment checklist for advanced heart failure." Annals of Long-Term Care **Aug**(15): 21-4.
- Copeland-Linder, N., V. C. Jones, et al. (2007). "Factors associated with retaliatory attitudes among African American adolescents who have been assaulted." Journal of Pediatric Psychology **32**(7): 760-770.
- Darr, K. (2006). "Virtue ethics: worth another look." Hospital Topics **84**(4): 29-31.
- Finkel, J. C., S. R. Pestieau, et al. (2007). "Ketamine as an adjuvant for treatment of cancer pain in children and adolescents." Journal of Pain **8**(6): 515-21.
- Friedman, M. and M. L. Borum (2007). "Colon cancer screening consultations may identify racial disparity in hypertension diagnosis and management." Journal of the National Medical Association **99**(5): 525-6.
- Friedman, M. and M. L. Borum (2007). "Colorectal cancer screening of African Americans by internal medicine resident physicians can be improved with focused educational efforts." Journal of the National Medical Association **99**(9): 1010-1012.
- Ghaemi, S. N., J. Y. Ko, et al. (2001). "The bipolar spectrum and the antidepressant view of the world." Journal of Psychiatric Practice **7**(5): 287-297.
- Ghaemi, S. N., E. Schrauwen, et al. (2006). "Long-term lamotrigine plus lithium, for bipolar disorder: one year outcome." Journal of Psychiatric Practice **12**(5): 300-305.
- Gibert, C. L., J. C. Shlay, et al. (2007). "Racial differences in long-term changes in body composition in antiretroviral-naive persons initiating HAART." Antiviral Therapy **12**(6): L19-L20.
- Gibert, C. L., J. C. Shlay, et al. (2007). "Racial differences in long-term changes in metabolic parameters in antiretroviral-naive persons initiating HAART." Antiviral Therapy **12**(6): L19-L19.
- Gioia, G. A. and P. K. Isquith (2004). "Ecological assessment of executive function in traumatic brain injury." Developmental Neuropsychology **25**(1-2): 135-158.
- Gong, M., M. Garige, et al. (2007). "Liver Galbeta1,4GlcNAc alpha2,6-sialyltransferase is down-regulated in human alcoholics: possible cause for the appearance of asialoconjugates." Metabolism: Clinical & Experimental **56**(9): 1241-7.
- Goodwin, F. K. and M. A. Goldstein (2003). "Optimizing lithium treatment in bipolar disorder: a review of the literature and clinical recommendations." Journal of Psychiatric Practice **9**(5): 333-343.
- Green, D., T. Kawashima, et al. (2007). Fertility of males after treatment for childhood cancer - A preliminary report from the childhood cancer survivor study (CCSS). Pediatric Blood & Cancer. **49**: 413-413.
- Haffner, S. M., S. E. Kahn, et al. (2007). "Greater reductions in C-reactive protein with rosiglitazone than with glyburide or metformin despite greater weight gain." Diabetologia **50**: S36-S36.

Henson, D. E., A. M. Schwartz, et al. (2007). "Population-based analysis of pathologic data: a new approach to the investigation of uterine endometrial and ovarian endometrioid carcinomas." Archives of Pathology & Laboratory Medicine **131**(9): 1337-42.

Hong, R., J. E. Banta, et al. (2006). "Relationship between household wealth inequality and chronic childhood under-nutrition in Bangladesh." International Journal for Equity in Health. BioMed Central Ltd, London, UK **5**(15).

Hong, S., D. Y. Hwang, et al. (2007). "Functional analysis of various promoters in lentiviral vectors at different stages of in vitro differentiation of mouse embryonic stem cells." Molecular Therapy **15**(9): 1630-1639.

Hotez, P., E. Ottesen, et al. (2006). "The neglected tropical diseases: the ancient afflictions of stigma and poverty and the prospects for their control and elimination." Advances in Experimental Medicine & Biology **582**: 23-33.

Hotez, P. J. (2007). "Control of onchocerciasis--the next generation." Lancet **369**(9578): 1979-80.

Hsia, J., G. Heiss, et al. (2007). "Calcium/vitamin d supplementation and cardiovascular events." Circulation **115**(7): 846-54.

Hsia, J., K. L. Margolis, et al. (2007). "Prehypertension and cardiovascular disease risk in the women's health initiative." Circulation **115**(7): 855-60.

Hutcheson, K. A. (2007). "Application of new ophthalmic technology in the pediatric patient." Current Opinion in Ophthalmology **18**(5): 384-391.

Isquith, P. K., G. A. Gioia, et al. (2004). "Executive function in preschool children: examination through everyday behavior." Developmental Neuropsychology **26**(1): 403-422.

Jacobs, S. S., L. C. Stork, et al. (2007). "Substitution of oral and intravenous thioguanine for mercaptopurine in a treatment regimen for children with standard risk acute lymphoblastic leukemia: A collaborative children's oncology group/National Cancer Institute Pilot Trial (CCG-1942)." Pediatric Blood & Cancer **49**(3): 250-255.

Javaid, A., D. H. Steinberg, et al. (2007). "Outcomes of coronary artery bypass grafting versus percutaneous coronary intervention with drug-eluting stents for patients with multivessel coronary artery disease." Circulation **116**(11 Suppl): 11.

Kahn, S. E., S. M. Haffner, et al. (2007). "Increased incidence of fractures in women who received rosiglitazone in ADOPT (A Diabetes Outcome Progression Trial)." Diabetologia **50**: S37-S38.

Kaplowitz, P. B. (2007). "Commentary: Is growth hormone the best treatment for short stature in healthy peripubertal boys? Insights from the field of economics." Endocrinologist **17**(4): 221-226.

Karami, S., H. A. Young, et al. (2007). "Earlier age at diagnosis: another dimension in cancer disparity?" Cancer Detection and Prevention. Elsevier, New York, USA **31**(1): 29-34.

Kehn, K., R. Berro, et al. (2007). "Functional consequences of cyclin D1/BRCA1 interaction in breast cancer cells." Oncogene **26**(35): 5060-5069.

Kelly, J. J. (2006). "Neurologic complications of primary systemic amyloidosis." Reviews in Neurological Diseases **3**(4): 173-81.

Khanna, P. C., T. Ponsky, et al. (2007). "Sonographic appearance of canal of Nuck hydrocele." Pediatric Radiology **37**(6): 603-6.

Klase, Z., P. Kale, et al. (2007). "HIV-1 TAR element is processed by Dicer to yield a viral micro-RNA involved in chromatin remodeling of the viral LTR." BMC Molecular Biology **8**(63).

- Kooperberg, C., M. Cushman, et al. (2007). "Can biomarkers identify women at increased stroke risk? The women's health initiative hormone trials." *Plos Clinical Trials* **2**(6): 9.
- Koppelman, J. and J. G. Lear (1998). "The new child health insurance expansions: how will school-based health centers fit in?" *Journal of School Health* **68**(10): 441-6.
- Kwaku, M. P. and K. D. Burman (2007). "Myxedema coma." *Journal of Intensive Care Medicine* **22**(4): 224-31.
- Laughon, K., A. C. Gielen, et al. (2007). "The relationships among sexually transmitted infection, depression, and lifetime violence in a sample of predominantly African American women." *Research in Nursing & Health* **30**(4): 413-428.
- Lee, J. L., Z. Klase, et al. (2007). "Cellular homeoproteins, SATB1 and CDP, bind to the unique region between the human cytomegalovirus UL127 and major immediate-early genes." *Virology* **366**(1): 117-125.
- Lichter-Konecki, U., E. Hoffman, et al. (2007). "Expression profiling of astrocytes from hyperammonemic mice reveals downregulation of genes important for water and potassium homeostasis." *Journal of Inherited Metabolic Disease* **30**: 81-81.
- Makari, J. H., M. A. Atalla, et al. (2007). "Safety and efficacy of intratesticular injection of vital dyes for lymphatic preservation during varicocelelectomy." *Journal of Urology* **178**(3 Pt 1): 1026-30.
- Maniscalco, J., M. Ottolini, et al. (2006). "Long-stay patients in academic children's hospitals." *Journal of Clinical Outcomes Management* **13**(5): 270-8.
- Massaro, A. N., R. Rothbaum, et al. (2006). "Fetal brain development: the role of maternal nutrition, exposures and behaviors." *Journal of Pediatric Neurology. The Society of Pediatric Science, Van, Turkey* **4**(1): 1-9.
- McKay, M. P. (2006). "National Highway Traffic Safety Administration (NHTSA) notes. Seat belt use in 2005: demographic results." *Annals of Emergency Medicine* **47**(4): 370-2.
- Melo, M. D. and G. Obeid (2007). "Radiolucent lesions of the maxillofacial complex in a patient with mucopolidosis type II (MLSII): case report." *Oral Surgery Oral Medicine Oral Pathology Oral Radiology & Endodontics* **104**(4).
- Moak, J. P., K. Hasbani, et al. (2006). "Dilated cardiomyopathy following right ventricular pacing for AV block in young patients: resolution after upgrading to biventricular pacing systems." *Journal of Cardiovascular Electrophysiology* **17**(10): 1068-71.
- Moschovi, M., T. Stavrou, et al. (2007). "Survival among children with medulloblastoma in Greece: gains from transition to chemotherapy and socio-economic differentials." *European Journal of Cancer Prevention* **16**(5): 460-465.
- Moudgil, A. and J. Kosut (2007). "Urinary schistosomiasis: an uncommon cause of gross hematuria in the industrialized countries." *Pediatric Nephrology. Springer Verlag GmbH, Heidelberg, Germany* **22**(8): 1225-1227.
- Nagase, H., K. M. Jones, et al. (2007). "Despite increased CD4+Foxp3+ cells within the infection site, BALB/c IL-4 receptor-deficient mice reveal CD4+Foxp3-negative T cells as a source of IL-10 in Leishmania major susceptibility." *Journal of Immunology* **179**(4): 2435-44.
- Nicholson, H. S., C. S. Kretschmar, et al. (2007). "Phase 2 study of temozolomide in children and adolescents with recurrent central nervous system tumors - A report from the children's oncology group." *Cancer* **110**(7): 1542-1550.
- O'Connell, K. J., M. M. Farah, et al. (2007). "Family presence during pediatric trauma team activation: An assessment of a structured program." *Pediatrics* **120**(3): E565-E574.

O'Donnell, D. A., P. T. Joshi, et al. (2007). "Training in developmental responses to trauma for child service providers." Psychiatric Services **58**(1): 12-14.

Panandiker, A. P., H. Ning, et al. (2007). "Craniospinal irradiation with spinal IMRT to improve target homogeneity." International Journal of Radiation Oncology Biology Physics **68**(5): 1402-1409.

Pary, P. P., S. Vege, et al. (2007). "Molecular testing explains the production of anti-D in an Rh-positive toddler." Transfusion **47**(3): 151A-151A.

Pearl, P. L., J. L. Taylor, et al. (2007). "The pediatric neurotransmitter disorders." Journal of Child Neurology **22**(5): 606-16.

Perrin, R. M., N. D. Fedorova, et al. (2007). "Transcriptional regulation of chemical diversity in *Aspergillus fumigatus* by *LaeA*." Plos Pathogens **3**(4): 508-517.

Pollack, S. M., G. Gutierrez, et al. (2006). "Pulmonary alveolar proteinosis with myeloproliferative syndrome with myelodysplasia: bronchoalveolar lavage reduces white blood cell count." American Journal of Hematology **81**(8): 634-8.

Pritsch, T., J. Bickels, et al. (2007). "Is scapular endoprosthesis functionally superior to humeral suspension?" Clinical Orthopaedics & Related Research **456**: 188-95.

Pucci, E., F. Brody, et al. (2007). "Laparoscopic splenectomy for delayed splenic rupture after embolization." Journal of Trauma-Injury Infection and Critical Care **63**(3): 687-690.

Rabbani, G., D. Benzil, et al. (2007). "Combination therapy with thalidomide, temozolomide and tamoxifen improves quality of life in patients with malignant astrocytomas." Anticancer Research **27**(4C): 2729-2736.

Rakhmanina, N., S. Soldin, et al. (2007). "Saliva concentrations of NRTIs and PIs are better predictors of free than total plasma concentrations in children with HIV infection." Therapeutic Drug Monitoring **29**(4): 476-477.

Reiss, A. L., C. Feinstein, et al. (1986). "Autism and genetic disorders." Schizophrenia Bulletin **12**(4): 724-738.

Santi, M., N. Kadom, et al. (2007). "Undiagnosed medulloblastoma presenting as fatal hemorrhage in a 14-year-old boy: case report and review of the literature." Childs Nervous System **23**(7): 799-805.

Shah, R. K., H. A. Feldman, et al. (2007). "A grading scale for pediatric vocal fold nodules." Otolaryngology Head and Neck Surgery **136**(2): 193-7.

Shen, D. T., J. S. Ma, et al. (2006). "Activation of primary T lymphocytes results in lysosome development and polarized granule exocytosis in CD4+ and CD8+ subsets, whereas expression of lytic molecules confers cytotoxicity to CD8+ T cells." Journal of Leukocyte Biology **80**(4): 827-37.

Shlay, J. C., S. Sharma, et al. (2007). "Long-term subcutaneous tissue changes among antiretroviral naive persons initiating three nucleoside regimens." Antiviral Therapy **12**(6): L30-L31.

Shorr, A. F. (2007). "Epidemiology of staphylococcal resistance." Clinical Infectious Diseases **45**(3): 15.

Siegel, B., J. Bretsch, et al. (2007). "Assumed equity: early observations from the first hospital disparities collaborative." Journal for Healthcare Quality **29**(5): 11-5.

Simon, J. A. (2007). "Hormone therapy in the 21st century: clinical considerations for moving beyond oral therapy. Bringing clarity to current trial data." Women's Health Care Spring(6): 11-4.

Sripa, B., S. Kaewkes, et al. (2007). "Liver fluke induces cholangiocarcinoma." Plos

Medicine **4**(7): 1148-1155.

Stephen, S. and M. L. Borum (2007). "Gastric antral vascular ectasia associated with systemic sclerosis: A case report and review of the literature." American Journal of Gastroenterology **102**: S334-S335.

Stephen, S., M. L. Borum, et al. (2007). "Using colon cancer screening to aid in identifying obesity." American Journal of Gastroenterology **102**: S560-S560.

Swift, L., J. McHowat, et al. (2007). "Anthracycline-induced phospholipase A2 inhibition." Cardiovascular Toxicology **7**(2): 86-91.

Szerlip, N. J., S. Walbridge, et al. (2007). "Real-time imaging of convection-enhanced delivery of viruses and virus-sized particles." Journal of Neurosurgery **107**(3): 560-567.

Wollins, E. R. and S. Bashir (2007). "Uveal melanoma with hepatic metastases: A case report." American Journal of Gastroenterology **102**: S399-S399.

Wong, E. C., C. A. Colvin, et al. (2007). Associated mortality with increased blood utilization in neonates undergoing extracorporeal membrane oxygenation. Transfusion. **47**: 21A-21A.

Wong, E. C., V. R. Criss, et al. (2007). "A new contraindication for granulocyte transfusion (GTX): Concomitant ornithine transcarbamylase (OTC) deficiency and CGD (CGD)." Transfusion **47**(3): 56A-56A.

Worsham, M. J., U. Raju, et al. (2007). "Multiplicity of benign breast lesions is a risk factor for progression to breast cancer." Clinical Cancer Research **13**(18): 5474-5479.

Younger, K. and S. Rosenbaum (2007). "Philip Morris USA v Williams: implications for public health policy and practice." Public Health Reports **122**(5): 702-4.

Zantek, N. D., N. Abdullah, et al. (2007). "Development of multiple RBC alloantibodies in a pediatric patient with juvenile rheumatoid arthritis and macrophage activation syndrome." Transfusion **47**(3): 133A-134A.



[Comments](#) | [About](#) | [Intranet](#) | [SMHS](#) | [SoN](#) | [GWSPH](#) | [GWU](#)

Himmelfarb Health Sciences Library | The George Washington University  
2300 Eye St., NW, Washington, DC 20037 | Phone: (202) 994-2850 | Fax: (202) 994-4343