

NOV 17, 2021

**MIRL '21**

Medical Institutional  
Repositories in Libraries  
*Inaugural Virtual Symposium*

# Development of an Archive at Monmouth Medical Center

Frederic C. Pachman AHIP  
Library Director

**Monmouth  
Medical Center**

**ARCHIVES & SPECIAL COLLECTIONS**

**RWJBarnabas  
HEALTH**







BROADWAY—1887

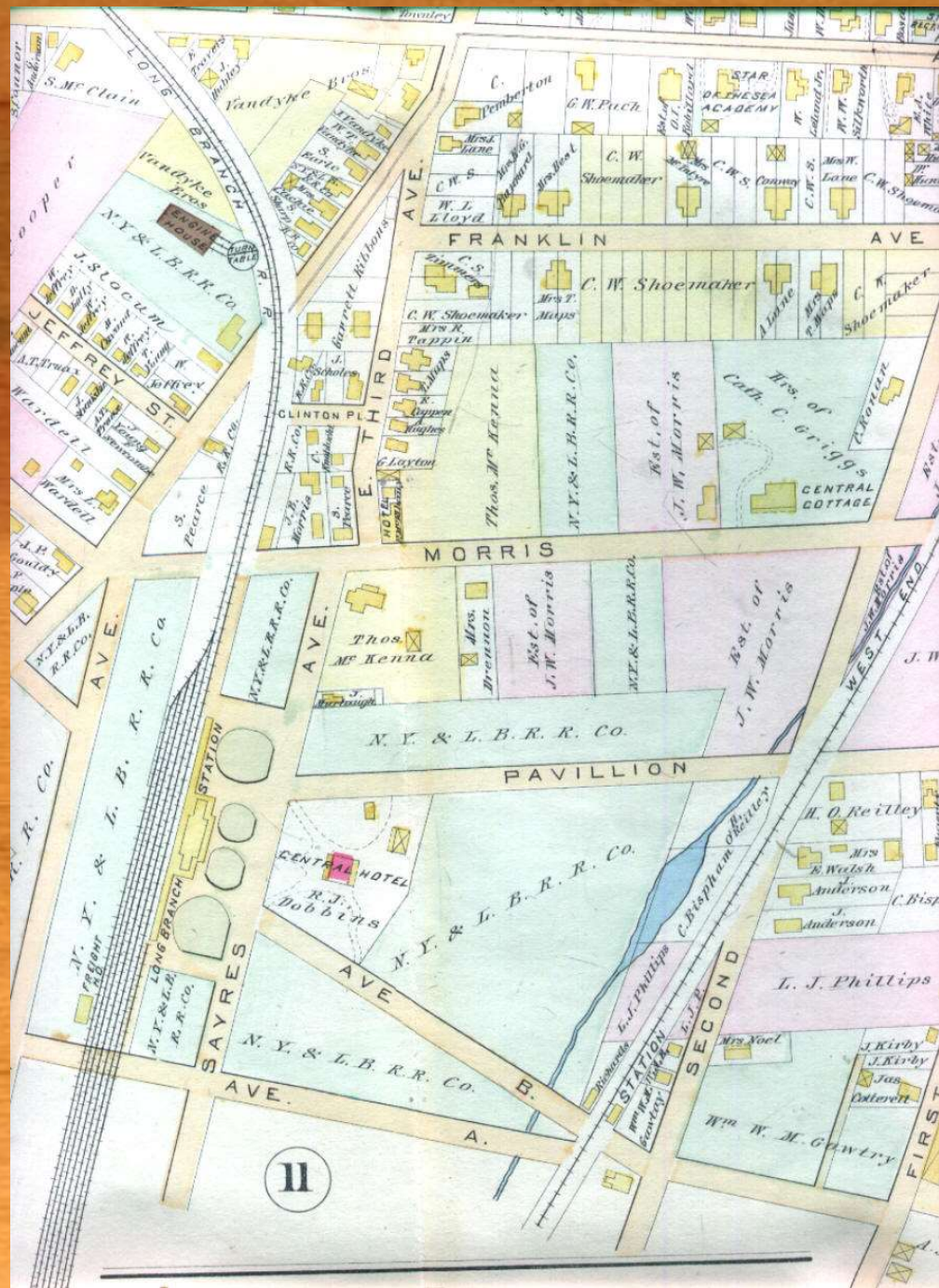


# The Central Hotel,



LONG BRANCH.







1889.

FIRST ANNUAL REPORT

OF THE

Monmouth Memorial Hospital

ASSOCIATION

— OF —

MONMOUTH COUNTY, NEW JERSEY,

LOCATED IN LONG BRANCH,

FOR THE YEAR ENDING DECEMBER 31ST, 1889.

WITH THE

CHARTER, BY-LAWS, ETC.

ORGANIZED AND INCORPORATED JANUARY, 1889.

“The truly generous is the truly wise ;  
And he who loves not others, lives unblest.”

LONG BRANCH, N. J.  
LONG BRANCH TIMES PRINT,  
1890.

*Property of Mary G. Hughes*

BY-LAWS,  
RULES AND REGULATIONS

OF THE  
Monmouth Memorial Hospital

JULY, 1891.

LONG BRANCH, N. J.

NEW YORK:  
JOHN C. RANKIN CO., PRINTERS AND STATIONERS,  
NO. 34 CHATELAIN STREET.

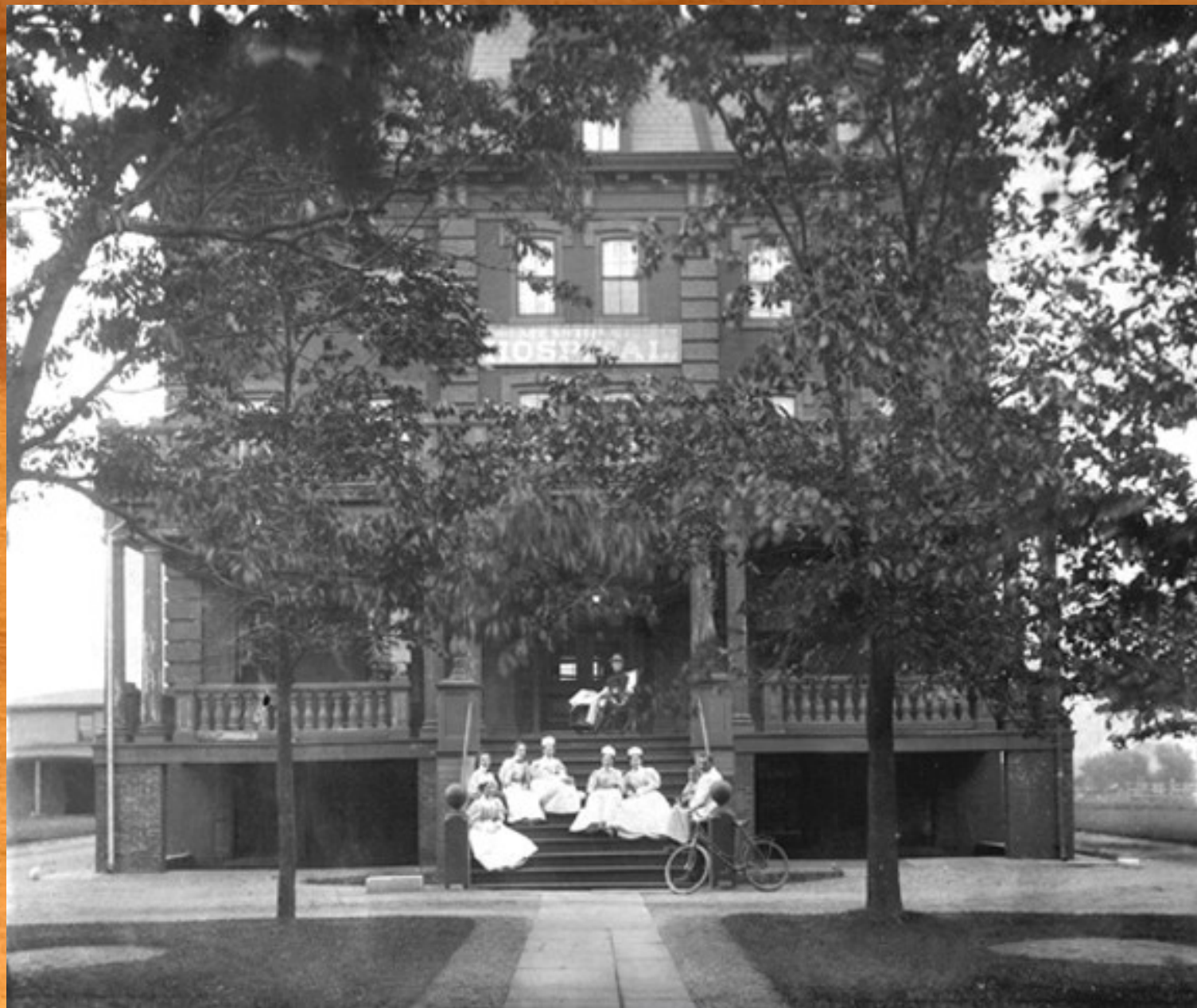
PROGRAMME  
—FOR THE—  
OPENING OF THE  
Monmouth Memorial Hospital,  
THURSDAY AFTERNOON,  
APRIL - 30th, - 1891.  
AT 3 O'CLOCK.

CHAIRMAN, DR. S. R. HUNT.

1. Music, - - - - The Orchestra.
2. Scripture Lesson, "The Good Samaritan," Rev. A. B. [Herman.
3. Invocation, - - - - Rev. W. G. Russell.
4. Address, - - - - Governor Leon Abbett.
5. Vocal Solo, "The King's Champion," W. S. B. Parker.
6. Address, - - - - Rev. J. R. Westwood.
7. Address, - - - - Rev. C. J. Young, D. D.
8. Music, - - - - The Orchestra.
9. Address, - - - - Judge Pitman, of New York.
10. Benediction, - - - - Rev. J. Ward Gamble.

"LONG BRANCH TIMES" PRINT.









MONMOUTH MEMORIAL HOSPITAL, LONG BRANCH, N. J.





1903 Monmouth Memorial Hospital wiht new North wing and Nursing Home (background)  
Photograph from 1903 Annual Report

## HOUSE STAFF 1925



FREDERICK BULLWINKEL, M.D.  
RUTGERS UNIV., B.S.  
HARVARD UNIV., M.D.



ARTHUR STRAUSS, M.D.  
UNIV. OF WÜRZBURG,  
GERMANY, M.D.



ARCHIBALD GOLDSHINE, M.D.  
TUFTS MED. SCHOOL, M.D.



EDWARD GLAZER, M.D.  
YALE UNIV., PH.D.  
TULANE MED. COLLEGE, M.D.







# ANNUAL REPORT

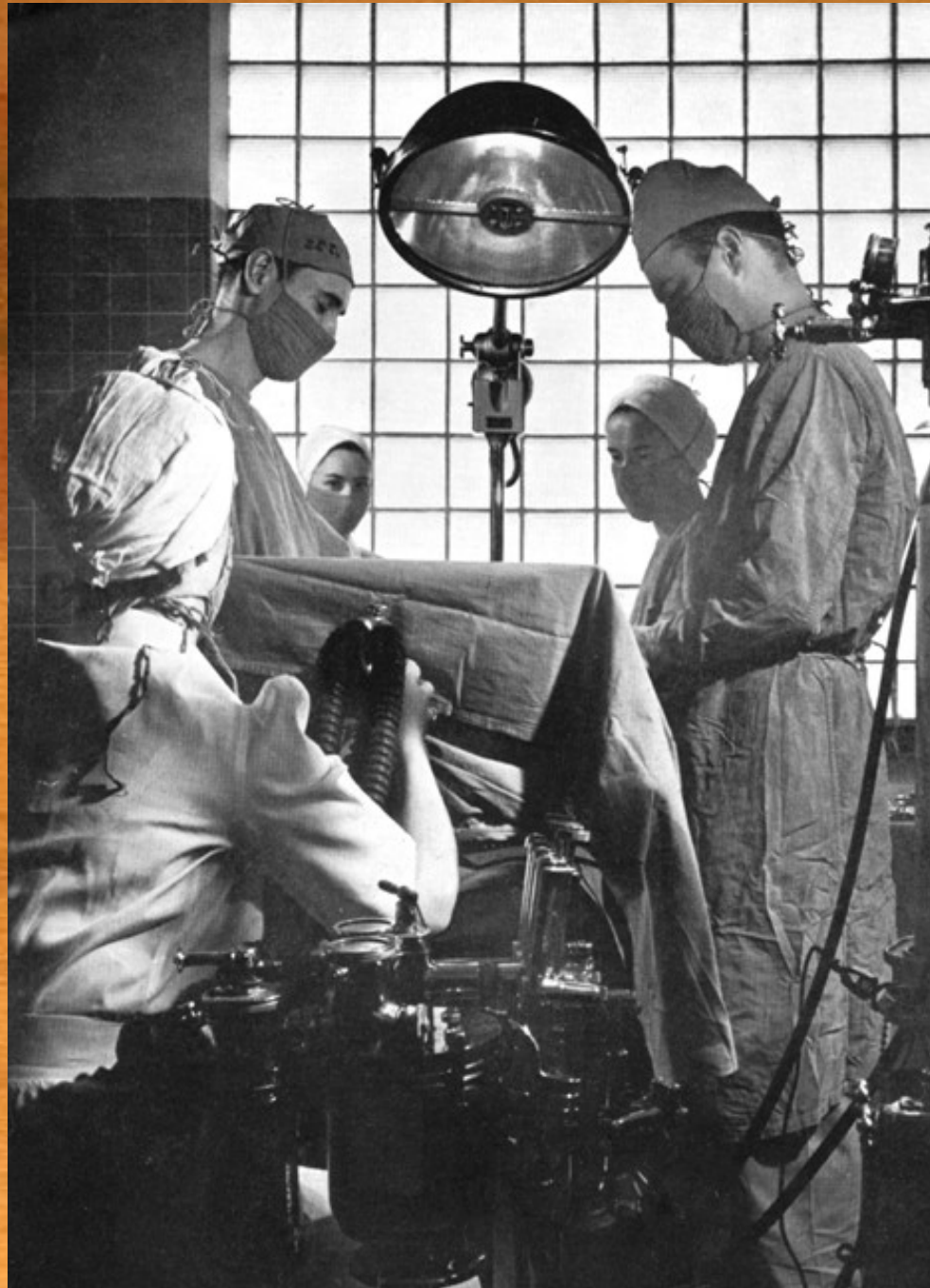


MONMOUTH MEMORIAL HOSPITAL  
LONG BRANCH 1941 NEW JERSEY











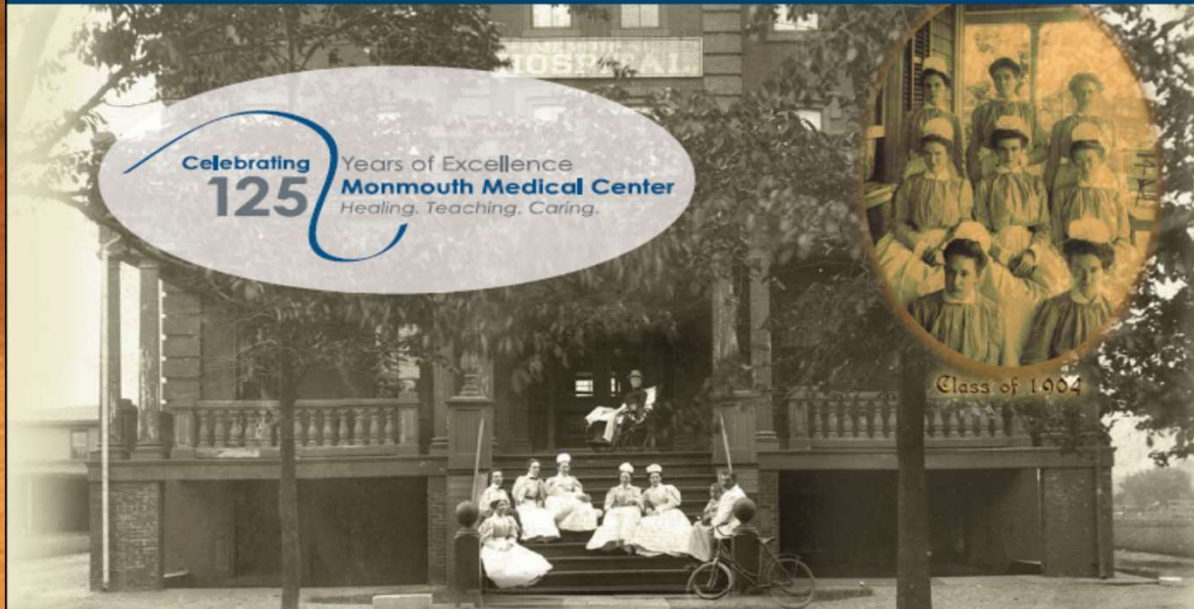
# MONMOUTH MEDICAL CENTER

## CELEBRATES 125 YEARS

Celebrating  
**125** Years of Excellence  
**Monmouth Medical Center**  
Healing. Teaching. Caring.



Class of 1904



MMC Circa 1891



Horse-drawn Ambulance  
at Monmouth Medical Center  
Circa 1902

Monmouth Medical Center Circa 1960





Celebrating **125** Years of Excellence  
**Monmouth Medical Center**  
*Healing. Teaching. Caring.*  
**1887 - 2012**

Monmouth Medical Center marks 125 years of providing high-quality health care to the region. From its earliest beginnings in four rented rooms above a Broadway storefront, to its current state, -a regional academic medical center, Monmouth Medical Center has a longstanding history of adapting and expanding to offer the latest advancements, treating patients with compassionate care and providing clinical excellence.

The origins of Monmouth date back to 1887, when area leaders recognized the need for a hospital in Monmouth County. In its earliest years the hospital moved three times before in what was formerly Long Branch's Central Hotel. one of New Jersey's largest academic medical centers, a teaching affiliate of Philadelphia's Hahnemann University, the Drexel University College of Medicine for more recognition of the progress made within its walls, its advances and breakthroughs in patient care, education, the hospital's name was changed to Monmouth Medical Center.

■■ **BARNABAS HEALTH**  
 ■■ Monmouth Medical Center







## Contact Information

Frederic C. Pachman AHIP

Director, Medical Library

732.923.6645

[frederic.pachman@rwjbh.org](mailto:frederic.pachman@rwjbh.org)



Made on a Mac



