

**Himmelfarb Health Sciences Library, The George Washington University**  
**Health Sciences Research Commons**

---

Information Interface (1999 - 2009)

Himmelfarb Health Sciences Library

---

1-2002

# Information Interface - Volume 30, Issue 1 - January/February 2002

George Washington University, Himmelfarb Health Sciences Library

Follow this and additional works at: <https://hsrc.himmelfarb.gwu.edu/ii>

 Part of the [Library and Information Science Commons](#), and the [Medicine and Health Sciences Commons](#)

---

## Recommended Citation

George Washington University, Himmelfarb Health Sciences Library, "Information Interface - Volume 30, Issue 1 - January/February 2002" (2002). *Information Interface (1999 - 2009)*. Paper 19.  
<https://hsrc.himmelfarb.gwu.edu/ii/19>

This Newsletter is brought to you for free and open access by the Himmelfarb Health Sciences Library at Health Sciences Research Commons. It has been accepted for inclusion in Information Interface (1999 - 2009) by an authorized administrator of Health Sciences Research Commons. For more information, please contact [hsrc@gwu.edu](mailto:hsrc@gwu.edu).

# Himmelfarb Health Sciences Library



[Home](#) [About](#) [Site Map](#) [? Ask Us](#)

## Information Interface

Office of Educational Resources  
School of Medicine and Health Care Sciences  
School of Public Health and Health Services

January/February 2002

Volume 30/Issue 1

### Director's Desk

Greetings to everyone and best wishes for a safe, healthy, and prosperous New Year! The Library is pleased to start 2002 with several new initiatives underway. You will read elsewhere in this newsletter about new subscriptions in research fields, about the inauguration of the authoring workstation for preparing multimedia course materials and about the relocation and grand opening of the Wertlieb Media Resource Center for Long-Term Care within the Himmelfarb Library. The materials in this resource center are a valuable addition to our collection of health care administration resources.

Thanks also to a gift from the American College of Health Care Administrators, the Library's resources in general health care administration have greatly expanded. Himmelfarb's print and electronic resources in alternative and complementary medicine are also growing as the Library participates in the Center for Integrative Medicine's grant from the Fund for the Improvement of Postsecondary Education to support an undergraduate medical curriculum in this vital area. The new year is beginning with lots of promise

*Anne Linton, Director,  
Library Services*



### Inside this issue...

[Information Interface Home](#)

[Director's Desk](#)

[Food & Drink Policy](#)

[Wertlieb Ceremony](#)

[The Himmelfarb Welcome Wagon](#)

[Biomedical Communications](#)

[E-Pharmacology Resources](#)

[Document Delivery to Your Desktop](#)

[The Encyclopedia of Life Sciences](#)

[Off-campus Access Problems](#)

[Spotlight on Academic Computing](#)

[PEER Project](#)

[Health Observance Corner](#)

[Library Welcomes New Staff](#)

[Collections & Acquisitions](#)

[Database Digest](#)

[Savvy Searcher](#)

[Class Calender](#)

[Faculty Publications](#)

[Library Hours](#)

[Library Assistance](#)

# Himmelfarb Health Sciences Library



[Home](#) [About](#) [Site Map](#) [? Ask Us](#)

## Information Interface

Office of Educational Resources  
School of Medicine and Health Care Sciences  
School of Public Health and Health Services

January/February 2002

Volume 30/Issue 1

### Himmelfarb Food and Drink Policy

The Himmelfarb Health Sciences Library, as one of the most student-friendly libraries in the country, allows food and drink in the library under the following guidelines which are strictly enforced:

1. Effective August 17, 1998, drinks are allowed in the Library ONLY in thermal spill-proof mugs. These thermal mugs do not sweat leaving condensation on the tables and do not tip easily. Individualized negotiations regarding acceptable versus not acceptable containers became too contentious to manage. Therefore, all other beverage containers found in the library will be collected and discarded. Mugs are available for purchase at the Circulation desk
2. Food is allowed in modest quantities (e.g. sandwiches or snacks); users are asked to cleanup and place wrappers in trash baskets. No food deliveries are allowed.
3. No food or drink is allowed near any equipment or computer workstation. This means no food or drink in the Bloedorn AV Study Center or Microcomputer Lab or around the PCs on the first floor of the Library.
4. Students who do not comply with these regulations will be directed to the Dean's Office (SMHS or MISPH as appropriate) to explain their inability to follow posted regulations.

*Shelley A. Bader, Ed.D.*  
*Associate Vice President,*  
*Educational Resources*



#### Inside this issue...

- [Information Interface Home](#)
- [Director's Desk](#)
- [Food & Drink Policy](#)
- [Wertlieb Ceremony](#)
- [The Himmelfarb Welcome Wagon](#)
- [Biomedical Communications](#)
- [E-Pharmacology Resources](#)
- [Document Delivery to Your Desktop](#)
- [The Encyclopedia of Life Sciences](#)
- [Off-campus Access Problems](#)
- [Spotlight on Academic Computing](#)
- [PEER Project](#)
- [Health Observance Corner](#)
- [Library Welcomes New Staff](#)
- [Collections & Acquisitions](#)
- [Database Digest](#)
- [Savvy Searcher](#)
- [Class Calender](#)
- [Faculty Publications](#)
- [Library Hours](#)
- [Library Assistance](#)

# Himmelfarb Health Sciences Library



[Home](#) [About](#) [Site Map](#) [? Ask Us](#)

## Information Interface

Office of Educational Resources  
School of Medicine and Health Care Sciences  
School of Public Health and Health Services

January/February 2002

Volume 30/Issue 1

### The Wertlieb Ceremony

On November 13, 2001, in the presence of the Board of Trustees of the Wertlieb Media Resource Center (WMRC), distinguished guests and family, Harvey Wertlieb officiated at the ribbon cutting ceremony of the WMRC. A reception followed in the Library's Levine Lounge where in their remarks both Richard E. Southby, Dean of The School of Public Health and Health Sciences and Shelley A. Bader, Vice President for Educational Resources thanked the Wertlieb family and friends who have endowed the center and stressed its importance in providing timely educational resources to the students, faculty and area professionals in the increasingly important field of long-term care.

This center honors Harvey Wertlieb, an undergraduate and graduate alumnus of The George Washington University (GW), and a distinguished long-term care administrator. It was made possible through the generous donations of the Wertlieb family and friends, many of whom are also GW alumni.

The installation of the WRMC within Himmelfarb Library affords both institutions a greatly expanded collection of resources in gerontology and long-term care to our students, faculty and to area professionals in health services and policy, public health medicine and other healthcare fields.



### Inside this issue...

- [Information Interface Home](#)
- [Director's Desk](#)
- [Food & Drink Policy](#)
- [Wertlieb Ceremony](#)
- [The Himmelfarb Welcome Wagon](#)
- [Biomedical Communications](#)
- [E-Pharmacology Resources](#)
- [Document Delivery to Your Desktop](#)
- [The Encyclopedia of Life Sciences](#)
- [Off-campus Access Problems](#)
- [Spotlight on Academic Computing](#)
- [PEER Project](#)
- [Health Observance Corner](#)
- [Library Welcomes New Staff](#)
- [Collections & Acquisitions](#)
- [Database Digest](#)
- [Savvy Searcher](#)
- [Class Calender](#)
- [Faculty Publications](#)
- [Library Hours](#)
- [Library Assistance](#)

# Himmelfarb Health Sciences Library



[Home](#) [About](#) [Site Map](#) [? Ask Us](#)

<

## Information Interface

Office of Educational Resources  
School of Medicine and Health Care Sciences  
School of Public Health and Health Services

January/February 2002

Volume 30/Issue 1

### The Himmelfarb Welcome Wagon

Are you new to the George Washington University Medical Center? Would you like a tour of the library and a chance to be introduced to the Library's services and web page? A new tradition will begin on Friday, January 11th at noon. This will be the first offering of the "Himmelfarb Welcome Wagon." Once a month on the second Friday we will offer this chance to get familiar with the Himmelfarb Health Sciences Library. The tour will meet in the Library near the Reference Desk at noon and is limited to 12 people. No registration is necessary – just first come first served. Hope to see you onboard soon.



#### Inside this issue...

[Information Interface Home](#)

[Director's Desk](#)

[Food & Drink Policy](#)

[Wertlieb Ceremony](#)

[The Himmelfarb Welcome Wagon](#)

[Biomedical Communications](#)

[E-Pharmacology Resources](#)

[Document Delivery to Your Desktop](#)

[The Encyclopedia of Life Sciences](#)

[Off-campus Access Problems](#)

[Spotlight on Academic Computing](#)

[PEER Project](#)

[Health Observance Corner](#)

[Library Welcomes New Staff](#)

[Collections & Acquisitions](#)

[Database Digest](#)

[Savvy Searcher](#)

[Class Calender](#)

[Faculty Publications](#)

[Library Hours](#)

[Library Assistance](#)



# Himmelfarb Health Sciences Library



[Home](#) [About](#) [Site Map](#) [? Ask Us](#)

## Information Interface

Office of Educational Resources  
School of Medicine and Health Care Sciences  
School of Public Health and Health Services

January/February 2002

Volume 30/Issue 1

### Biomedical Communications Spotlight

Do you need a passport photo? How about a portrait?  
Do you need slides processed today?  
Going to a party this weekend and need a disposable camera?

*Biomedical Communications has all of this and so much more!*

The Biomedical Communications Department here at GW is a multifaceted department specifically designed to support the teaching, research, and business needs of the GW community. The department is comprised of three divisions: Photography, Graphic Design, and Duplication.

Our Photography Department offers a wide variety of high quality photographic services at reasonable prices. Our staff consists of 5 professional photographers who come from various photographic backgrounds.

Our services include:

- › **Medical Photography**- operating room, patients, clinical, specimen, photomicrography
- › **Location Photography**- special events, public relations, group photos, city and campus photos, stock photos for use in brochures
- › **Portraiture**- passports/applications, black and white, color, or digital portraits
- › **Documentation of Research**- culture plates, tubes, gels, autoradiographs, X-rays, instruments
- › **Teaching and Publication**- PowerPoint slides, copy slides, custom black and white printing
- › **Digital Imaging**- scanning, dye-sublimation prints, photo restoration
- › **Film & Print Processing**- E6 slide processing, hand process black and white negative film
- › **Color Print Processing**- color print processing by Kodak and Konica

Our highly creative Graphics Department will work with you to turn your thoughts and ideas into the best possible design and layout to promote your department, research, or special event.

We can help you with the following:

- › **Posters**- title banners, drymounting, one-piece displays, individual mounted pieces
- › **Brochures**- design, layout, photography, printing
- › **Stationery**- letterhead, business cards, invitations, certificates, invitations
- › **Web Design**- Internet development and maintenance

Our Duplication Department offers a wide array of services to meet your classroom,

### Inside this issue...

[Information Interface Home](#)

[Director's Desk](#)

[Food & Drink Policy](#)

[Wertlieb Ceremony](#)

[The Himmelfarb Welcome Wagon](#)

[Biomedical Communications](#)

[E-Pharmacology Resources](#)

[Document Delivery to Your Desktop](#)

[The Encyclopedia of Life Sciences](#)

[Off-campus Access Problems](#)

[Spotlight on Academic Computing](#)

[PEER Project](#)

[Health Observance Corner](#)

[Library Welcomes New Staff](#)

[Collections & Acquisitions](#)

[Database Digest](#)

[Savvy Searcher](#)

[Class Calender](#)

[Faculty Publications](#)

[Library Hours](#)

[Library Assistance](#)

research, and business needs.

Services offered:

- **High Volume Copying**- from 15-20,000 copies, sizes from 8.5"x11"- 11"x17", syllabus, exams, lecture materials, grant applications, business letters and documents
- **Binding**- tape, GBC spiral, 1 or 2 staples, saddle stitch (two only)
- **Color Copying**- paper sizes from 8.5"x11"-11"x17", standard or heavy paper stock, color transparencies, prints from files, email, or hard copy
- **Self Service Black & White Copying**- walk-up self service copier, in the 3rd floor Ross Hall lobby, uses GWorld card system, copies can be single or double sided, collated, and stapled
- **Special Order Paper Stock**- pastel colors, parchment paper, index stock
- **Folding & Cutting**- 8.5"x11" folds to legal size envelopes, 11"x17" folds to 8.5"x 11"
- **Registered Copyright Clearance Center**

Biomedical Communications not only offers high quality services to meet the special needs of the entire GW community; we have extremely reasonable prices. Give us a call at 202-994-2904, email us at [photo@gwumc.edu](mailto:photo@gwumc.edu), or stop by Ross Hall, Room 324 to inquire about our services.



[Comments](#) | [About](#) | [Intranet](#) | [SMHS](#) | [SoN](#) | [GWSPH](#) | [GWU](#)

Himmelfarb Health Sciences Library | The George Washington University  
2300 Eye St., NW, Washington, DC 20037 | Phone: (202) 994-2850 | Fax: (202) 994-4343

# Himmelfarb Health Sciences Library



[Home](#) [About](#) [Site Map](#) [? Ask Us](#)

## Information Interface

Office of Educational Resources  
 School of Medicine and Health Care Sciences  
 School of Public Health and Health Services

January/February 2002

Volume 30/Issue 1

### Electronic Pharmacology Resources

There are a variety of electronic resources available in Himmelfarb Library to use for pharmacology information. Both MDCConsult and Micromedex provide extensive information on drugs including dosage and administration, brand and generic names, contraindications, and adverse effects. MDCConsult is available from any Internet accessible computer (see the Reference Desk to sign up for a personal account), and Micromedex can be accessed from the computers in the Himmelfarb Library and the Women's Board Room on the third floor of the Library.

The Library's Internet Resources Database also contains a series of librarian-selected links in the Pharmacology and Drug Information section. Included in this section are links to the FDA, Martindale's Virtual Pharmacy Center, a glossary of pharmacological terms and symbols, and various pharmaceutical web sites.

Finally, a wealth of drug information is available in the medical literature via MEDLINE. Drugs can be searched by brand or generic name. Citations can be further narrowed by choosing from the various subheadings including administration and dosage, adverse effects, chemistry, contraindications, diagnostic use, economics, metabolism, pharmacology, poisoning, and toxicity. Drug information is also available when searching by disease or syndrome. After searching by disease name, limit the search to the subheading drug therapy to find articles on medications used to treat the particular illness or syndrome. For additional information on any of these resources, please contact the Reference Desk at 202-994-2850.



### Inside this issue...

- [Information Interface Home](#)
- [Director's Desk](#)
- [Food & Drink Policy](#)
- [Wertlieb Ceremony](#)
- [The Himmelfarb Welcome Wagon](#)
- [Biomedical Communications](#)
- [E-Pharmacology Resources](#)
- [Document Delivery to Your Desktop](#)
- [The Encyclopedia of Life Sciences](#)
- [Off-campus Access Problems](#)
- [Spotlight on Academic Computing](#)
- [PEER Project](#)
- [Health Observance Corner](#)
- [Library Welcomes New Staff](#)
- [Collections & Acquisitions](#)
- [Database Digest](#)
- [Savvy Searcher](#)
- [Class Calender](#)
- [Faculty Publications](#)
- [Library Hours](#)
- [Library Assistance](#)



# Himmelfarb Health Sciences Library



[Home](#) [About](#) [Site Map](#) [? Ask Us](#)

## Information Interface

Office of Educational Resources  
School of Medicine and Health Care Sciences  
School of Public Health and Health Services

January/February 2002

Volume 30/Issue 1

### Document Delivery to Your Desktop

The Himmelfarb Interlibrary Loan and Document Delivery Department is currently devising a means of delivering documents to your computer desktop. We hope that this new form of document delivery will make using our service more convenient for you while improving our already speedy turnaround time for requests.

Best of all, there will be no additional charge for email delivery! Watch for this new service in 2002



### Inside this issue...

- [Information Interface Home](#)
- [Director's Desk](#)
- [Food & Drink Policy](#)
- [Wertlieb Ceremony](#)
- [The Himmelfarb Welcome Wagon](#)
- [Biomedical Communications](#)
- [E-Pharmacology Resources](#)
- [Document Delivery to Your Desktop](#)
- [The Encyclopedia of Life Sciences](#)
- [Off-campus Access Problems](#)
- [Spotlight on Academic Computing](#)
- [PEER Project](#)
- [Health Observance Corner](#)
- [Library Welcomes New Staff](#)
- [Collections & Acquisitions](#)
- [Database Digest](#)
- [Savvy Searcher](#)
- [Class Calender](#)
- [Faculty Publications](#)
- [Library Hours](#)
- [Library Assistance](#)

# Himmelfarb Health Sciences Library



[Home](#) [About](#) [Site Map](#) [? Ask Us](#)

## Information Interface

Office of Educational Resources  
School of Medicine and Health Care Sciences  
School of Public Health and Health Services

January/February 2002

Volume 30/Issue 1

### Encyclopedia of Life Sciences

Himmelfarb Library is pleased to announce access to The Encyclopedia of Life Sciences - a single reference source with information pertaining to the fields of the life and biomedical sciences.

#### Key Features include:

Over 3,000 peer-reviewed articles (including tables and figures). All articles are original and have been specifically commissioned for ELS. The site is regularly updated. At least 20% of the material is completely revised during each year.

Direct links from references to the primary literature and to important scientific information resources.

A wide range of search and retrieval methods to suit different user needs.

This new resource can be accessed on and off campus via our databases page, under the "Textbooks and Electronic Resources" page. Explore and enjoy this new resource.



#### Inside this issue...

[Information Interface Home](#)

[Director's Desk](#)

[Food & Drink Policy](#)

[Wertlieb Ceremony](#)

[The Himmelfarb Welcome Wagon](#)

[Biomedical Communications](#)

[E-Pharmacology Resources](#)

[Document Delivery to Your Desktop](#)

[The Encyclopedia of Life Sciences](#)

[Off-campus Access Problems](#)

[Spotlight on Academic Computing](#)

[PEER Project](#)

[Health Observance Corner](#)

[Library Welcomes New Staff](#)

[Collections & Acquisitions](#)

[Database Digest](#)

[Savvy Searcher](#)

[Class Calender](#)

[Faculty Publications](#)

[Library Hours](#)

[Library Assistance](#)

# Himmelfarb Health Sciences Library



[Home](#) [About](#) [Site Map](#) [? Ask Us](#)

## Information Interface

Office of Educational Resources  
 School of Medicine and Health Care Sciences  
 School of Public Health and Health Services

January/February 2002

Volume 30/Issue 1

### Handling Off-campus Access Problems

For most individuals trying to access off-campus electronic resources goes without a problem. You just access the database or electronic journal desired from the Himmelfarb Library homepage, select the "off campus" link, type in your Social Security Number or Library User barcode, the proxy server will take you to the Gelman Library Aladin Menu and you can select the desired resource and you have access. But occasionally some patrons encounter minor problems. If these occur, here are some tips for troubleshooting these problems.

1. Make sure that you have permission to access the off-campus resources. Only current students, staff, and faculty of the Medical Center have this privilege.
2. Make sure that you selected the "off campus" link. This link will take you to the Aladin proxy server to verify user patron authentication. If this step fails to take you to the Gelman Library Aladin Menu, you may be required to take your GWorld card over to the Gelman Library circulation desk, located at 222nd and H street, and have your GWorld card "swiped" to verify access permission. This step remedies the majority of problems and ensures that you have been added into the database of authorized users, which will allow off-campus access.
3. If the problem still exists, call the reference desk and speak with a reference librarian. They will ask you to describe the problem step by step and may be able to determine the problem. If not, they will take your name, social security number and phone number to allow them to follow-up with library staff about your problem and try to remedy it.

These problems are rare, but do happen from time to time. We ask that you be patient and know that we understand that this can be a frustrating occurrence. We will work with you and the systems involved to correct your problem as quickly as possible.



### Inside this issue...

- [Information Interface Home](#)
- [Director's Desk](#)
- [Food & Drink Policy](#)
- [Wertlieb Ceremony](#)
- [The Himmelfarb Welcome Wagon](#)
- [Biomedical Communications](#)
- [E-Pharmacology Resources](#)
- [Document Delivery to Your Desktop](#)
- [The Encyclopedia of Life Sciences](#)
- [Off-campus Access Problems](#)
- [Spotlight on Academic Computing](#)
- [PEER Project](#)
- [Health Observance Corner](#)
- [Library Welcomes New Staff](#)
- [Collections & Acquisitions](#)
- [Database Digest](#)
- [Savvy Searcher](#)
- [Class Calender](#)
- [Faculty Publications](#)
- [Library Hours](#)
- [Library Assistance](#)

# Himmelfarb Health Sciences Library



[Home](#) [About](#) [Site Map](#) [? Ask Us](#)

## Information Interface

Office of Educational Resources  
 School of Medicine and Health Care Sciences  
 School of Public Health and Health Services

January/February 2002

Volume 30/Issue 1

### Spotlight on Academic Computing

There are so many things that we in the Medical Center take for granted. Among them are services like Faculty Publications, grades processing, grades on the web, online evaluations and surveys, online admissions and the preceptor computer match. Does any one wonder how all these things happen? Enter Academic Computing. This group headed by Jim Kiesel includes Cheryl Greene, Carol Stefancik, Mody Olympia and Stephen Di. Academic Computing develops, administers, maintains and modifies as necessary all of the services listed.

Faculty Publications is a cooperative effort by Stephen Di and Michelle Disturco, a reference librarian in Himmelfarb Library. Michelle provides the information which Stephen loads into a program to display each Medical Center faculty publication. The information is gathered from database searches, collection development staff and faculty input. The publication database is displayed through the Himmelfarb Library home page under "Resources for Faculty". It is available to anyone visiting our home page.

Many important Academic Computing functions serve the School of Medicine and Health Sciences and the School of Public Health and Health Services. Through the work of Jim Kiesel, Cheryl Greene and Mody Olympia Academic Computing provides the programming to process student grades. Students then can access their grades by using the web-based Grades Administrator program. Himmelfarb Library can assist students who forget their passwords. Please contact the Reference Desk.

Carol, Stephen and Mody manage the student admissions and registration process as well as the preceptor match and the course and mentor evaluations. Students are asked to evaluate their courses and mentors to improve classes for the following semester. Don't forget to complete them!

Academic Computing has an impact on many facets of the Medical Center. The next time you use one of their services, think of all the folks behind the scenes making it happen for you.



### Inside this issue...

- [Information Interface Home](#)
- [Director's Desk](#)
- [Food & Drink Policy](#)
- [Wertlieb Ceremony](#)
- [The Himmelfarb Welcome Wagon](#)
- [Biomedical Communications](#)
- [E-Pharmacology Resources](#)
- [Document Delivery to Your Desktop](#)
- [The Encyclopedia of Life Sciences](#)
- [Off-campus Access Problems](#)
- [Spotlight on Academic Computing](#)**
- [PEER Project](#)
- [Health Observance Corner](#)
- [Library Welcomes New Staff](#)
- [Collections & Acquisitions](#)
- [Database Digest](#)
- [Savvy Searcher](#)
- [Class Calender](#)
- [Faculty Publications](#)
- [Library Hours](#)
- [Library Assistance](#)

# Himmelfarb Health Sciences Library



[Home](#) [About](#) [Site Map](#) [? Ask Us](#)

## Information Interface

Office of Educational Resources  
School of Medicine and Health Care Sciences  
School of Public Health and Health Services

January/February 2002

Volume 30/Issue 1

### PEER Project

Do students and faculty grade the same way?

The PEER project is investigating this question through the use of exam questions for the first year medical school class. Using the computer lab in the Library and specially-designed software, the first year class took their (Doctor, Patient, Society) final exam online. The exam, consisting of multiple choice and essay questions, allowed students to save their responses after each section.

Once all students completed the exam, the responses were shuffled for the evaluation portion. Half the class was randomly selected to view the anonymous essay answers of their classmates. Each student evaluated eight essays (four answers to each of two questions), rating them based on model answers and grading criteria.

All student evaluations were also anonymous. All of the essays were also evaluated by faculty members. Students were able to view both faculty and student responses to their essays when the project was completed. A second exam and evaluation session will be held in the Spring. Once these results have been added to the past semester's results, we may know the answer to the question regarding faculty and student grading.



### Inside this issue...

- [Information Interface Home](#)
- [Director's Desk](#)
- [Food & Drink Policy](#)
- [Wertlieb Ceremony](#)
- [The Himmelfarb Welcome Wagon](#)
- [Biomedical Communications](#)
- [E-Pharmacology Resources](#)
- [Document Delivery to Your Desktop](#)
- [The Encyclopedia of Life Sciences](#)
- [Off-campus Access Problems](#)
- [Spotlight on Academic Computing](#)
- [PEER Project](#)
- [Health Observance Corner](#)
- [Library Welcomes New Staff](#)
- [Collections & Acquisitions](#)
- [Database Digest](#)
- [Savvy Searcher](#)
- [Class Calender](#)
- [Faculty Publications](#)
- [Library Hours](#)
- [Library Assistance](#)



# Himmelfarb Health Sciences Library



[Home](#) [About](#) [Site Map](#) [? Ask Us](#)

## Information Interface

Office of Educational Resources  
School of Medicine and Health Care Sciences  
School of Public Health and Health Services

January/February 2002

Volume 30/Issue 1

### Health Observance Corner

Welcome to the Health Observance Corner. In each issue of Information Interface the Library will spotlight several key health topics.

#### January

##### *National Eye Care Month*

Sponsored by Prevent Blindness America, whose goal is to raise awareness and provide information about common hazards, all types of eye injuries, preventive measures and protective eye gear.

##### *Women's Healthy Weight Week*

Healthy Weight Network promotes weight loss and nutrition books and information by recognized scientific experts. The main focus is on authoritative scientific research on dieting, the failure of weight-loss programs, eating disorders, obesity, overweight, size acceptance, diet quackery, and moving ahead with non-diet health at any paradigm.

#### February

##### *American Heart Month*

American Heart Association, highlights this annual occurrence by raising general awareness on fighting heart disease and stroke. AHA promotes healthy life styles for fighting heart disease by encouraging general public to adopt healthful eating habits and incorporating daily exercise routines.

##### *Pride in Food Service Week*

This Health Observance week which is from February 8-12, is sponsored by Dietary Managers Association (DMA). The goal of this non-for-profit association is to provide optimum nutritional care through food service management. DMA offers Networking and services to members, as well as information about publications, a gateway to food service and dietary resources, and the DMA Food Protection Education Center.



### Inside this issue...

- [Information Interface Home](#)
- [Director's Desk](#)
- [Food & Drink Policy](#)
- [Wertlieb Ceremony](#)
- [The Himmelfarb Welcome Wagon](#)
- [Biomedical Communications](#)
- [E-Pharmacology Resources](#)
- [Document Delivery to Your Desktop](#)
- [The Encyclopedia of Life Sciences](#)
- [Off-campus Access Problems](#)
- [Spotlight on Academic Computing](#)
- [PEER Project](#)
- Health Observance Corner**
- [Library Welcomes New Staff](#)
- [Collections & Acquisitions](#)
- [Database Digest](#)
- [Savvy Searcher](#)
- [Class Calender](#)
- [Faculty Publications](#)
- [Library Hours](#)
- [Library Assistance](#)



# Himmelfarb Health Sciences Library



[Home](#) [About](#) [Site Map](#) [? Ask Us](#)

## Information Interface

Office of Educational Resources  
School of Medicine and Health Care Sciences  
School of Public Health and Health Services

January/February 2002

Volume 30/Issue 1

### Himmelfarb Library Welcome New Staff

Leah Church, the new Circulation Manager, comes to Himmelfarb with recent experience as a supervisor in a large book store.

Lonnie Williams is the new Serials Assistant. Lonnie continues to work half time in Biomedical Education as the Quick Copy Specialist. Lonnie has worked at GW for 16 years.



#### Inside this issue...

- [Information Interface Home](#)
- [Director's Desk](#)
- [Food & Drink Policy](#)
- [Wertlieb Ceremony](#)
- [The Himmelfarb Welcome Wagon](#)
- [Biomedical Communications](#)
- [E-Pharmacology Resources](#)
- [Document Delivery to Your Desktop](#)
- [The Encyclopedia of Life Sciences](#)
- [Off-campus Access Problems](#)
- [Spotlight on Academic Computing](#)
- [PEER Project](#)
- [Health Observance Corner](#)
- [Library Welcomes New Staff](#)
- [Collections & Acquisitions](#)
- [Database Digest](#)
- [Savvy Searcher](#)
- [Class Calender](#)
- [Faculty Publications](#)
- [Library Hours](#)
- [Library Assistance](#)

# Himmelfarb Health Sciences Library



[Home](#) [About](#) [Site Map](#) [? Ask Us](#)

## Information Interface

Office of Educational Resources  
 School of Medicine and Health Care Sciences  
 School of Public Health and Health Services

January/February 2002

Volume 30/Issue 1

### New Collections and Acquisitions Section

Himmelfarb Health Sciences Library selects new journal titles based on faculty and student input as well as interlibrary loan requests. In addition, we build our collection to support new programs. In 2002, for example, we are adding two journal titles: *Alternative Therapies in Health and Medicine* and the *Journal of Alternative and Complementary Medicine* to support the Fund for the Improvement of Postsecondary program on Alternative Medicine.

All journals meet the criteria of being indexed in one of the following sources: MEDLINE, PubMed, HealthSTAR, Cumulative Index to Nursing and Allied Health Literature, or PSYCIInfo. We are also expanding our electronic journal collection, which currently includes over 500 titles.

Himmelfarb Health Sciences Library remains committed to maintaining a strong collection and in meeting the needs of faculty and patrons. To suggest electronic or print journals Himmelfarb Health Sciences Library to be considered for the 2003 subscription year, please contact Tina Raney, the Serials Librarian, at 202-994-8906 or [mlbclr@gwumc.edu](mailto:mlbclr@gwumc.edu).

### NEW JOURNAL TITLES FOR 2002

<u>Title</u>	<u>Format</u>
American Journal of Bioethics	Print & Online
Alternative Therapies in Health and Medicine	Print
Annals of Epidemiology	Print
European Journal of Public Health	Print & Online
Injury Prevention Print Journal of Biological Chemistry	Online (Already get print)
Journal of Alternative and Complementary Medicine	Print

### Inside this issue...

- [Information Interface Home](#)
- [Director's Desk](#)
- [Food & Drink Policy](#)
- [Wertlieb Ceremony](#)
- [The Himmelfarb Welcome Wagon](#)
- [Biomedical Communications](#)
- [E-Pharmacology Resources](#)
- [Document Delivery to Your Desktop](#)
- [The Encyclopedia of Life Sciences](#)
- [Off-campus Access Problems](#)
- [Spotlight on Academic Computing](#)
- [PEER Project](#)
- [Health Observance Corner](#)
- [Library Welcomes New Staff](#)
- Collections & Acquisitions**
- [Database Digest](#)
- [Savvy Searcher](#)
- [Class Calender](#)
- [Faculty Publications](#)
- [Library Hours](#)
- [Library Assistance](#)

Journal of Cataract Refractive Surgery	Print + Current Year of Online
Journal of Experimental Medicine	Online (Already get print)
Journal of Glaucoma Print Molecular Cell	Print & Online
Journal of Public Health Medicine	Print & Online
Medical Letter on Drugs and Therapeutics	CD-Rom (Already get print)
Nature Cell Biology	Print
Public Health Reviews	Print
Nature Neuroscience	Print
Nature Immunology	Print
WHO Technical Report Series	Print
<b>ASM 11 Online Journals Package:</b>	Online (*Already get print)
Antimicrobial Agents and Chemotherapy*	
Applied and Environmental Microbiology*	
Clinical and Diagnostic Laboratory Immunology	
Clinical Microbiology Reviews	
Eukaryotic Cell	
Infectious Immunology	
Journal of Bacteriology*	

[Journal of Clinical Microbiology\\*](#)

[Journal of Virology\\*](#)

[Microbiology and Molecular Biology Review\\*](#)

[Molecular and Cellular Biology\\*](#)



[Comments](#) | [About](#) | [Intranet](#) | [SMHS](#) | [SoN](#) | [GWSPH](#) | [GWU](#)

Himmelfarb Health Sciences Library | The George Washington University  
2300 Eye St., NW, Washington, DC 20037 | Phone: (202) 994-2850 | Fax: (202) 994-4343

# Himmelfarb Health Sciences Library

THE GEORGE  
WASHINGTON  
UNIVERSITY  
MEDICAL CENTER  
WASHINGTON DC

Home About Site Map  Ask Us

## Information Interface

Office of Educational Resources  
School of Medicine and Health Care Sciences  
School of Public Health and Health Services

January/February 2002

Volume 30/Issue 1

### Database Digest

MDchoice.com

<http://www.mdchoice.com>

Here is an excellent web site that offers two sections: one for health professionals and one for consumers. For this newsletter article we will highlight the section for health professionals. MDchoice offers an "Ultra Search" feature that searches content selected by board-certified physicians. Researchers can enter their topic and then limit the search by "Type of page" or "Type of Media." Some examples of the types of pages are case presentations; simulations, practice guidelines, or in-depth review/chapters. Some examples of types of media are photo's, ECG's, radiographs, CT Scans, MRI's, Ultrasounds, nuclear Images, Audio, or Video. And, if you have trouble spelling a word, MDchoice has a Spell Checker.

You can test your knowledge with some of the other features of MDchoice.com such as Photo rounds, ECG Rounds, and the newest feature Interactive Learning Cases. You can also see if you can save the patient with their ACLS and PALS critical care simulator. There is also a "reading room" with access to full-text journals and online textbooks.

"MDchoice.com is a privately held company founded by academic physicians and backed by private venture capital. MDchoice.com is a combination of their web technology with several medical websites including NetMedicine.com, Physician's Choice, and EMBBS.com (The Emergency Medicine and Primary Care Home Page)."

Medical Images and Illustrations

<http://www.mic.ki.se/Medimages.html>

If you are interested in finding medical images here is a great Internet resource that just might have what you are looking for. This Index site is organized into approximately 20 subjects ranging from Dermatology to Pathology to Gynecology & Obstetrics to Surgery/Anesthesiology. There is even a General image searching section. This site is produced by the Karolinska Institute, Sweden's only university of medicine.

---

1 MDchoice.com (2001) About Mdchoice.com. Retrieved December 20, 2001 from the World Wide Web: <http://www.mdchoice.com/about.asp>



### Inside this issue...

Information Interface  
Home

Director's Desk

Food & Drink Policy

Wertlieb Ceremony

The Himmelfarb Welcome  
Wagon

Biomedical  
Communications

E-Pharmacology Resources

Document Delivery to Your  
Desktop

The Encyclopedia of Life  
Sciences

Off-campus Access  
Problems

Spotlight on Academic  
Computing

PEER Project

Health Observance Corner

Library Welcomes New  
Staff

Collections & Acquisitions

Database Digest

Savvy Searcher

Class Calender

Faculty Publications

Library Hours

Library Assistance

# Himmelfarb Health Sciences Library



[Home](#) [About](#) [Site Map](#) [? Ask Us](#)

## Information Interface

Office of Educational Resources  
School of Medicine and Health Care Sciences  
School of Public Health and Health Services

January/February 2002

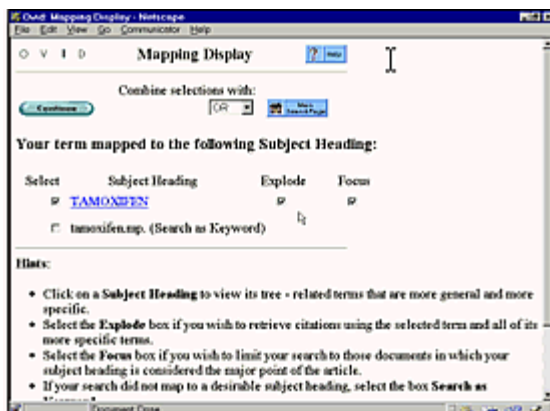
Volume 30/Issue 1

### Savvy Searcher

#### "Searching Rules"

#### Limiting Your Search

The problem in searching in MEDLINE is not finding too little, but rather finding too much. The ideal is to structure your search strategy so that you retrieve exactly the type of article you need. For example, let's say you are interested in locating recent articles on current clinical trials or studies on the use of tamoxifen in cancer treatment. This will require limiting your MEDLINE search to a particular publication type.



**STEP ONE –** Search using the subject term tamoxifen. Remember that the OVID MEDLINE search system will map you to the correct subject term. Using the explode and focus search features will improve your search results.

**STEP TWO –** Apply the subheading, therapeutic use, in order to retrieve references in which tamoxifen is used to treat cancer. If you selected all subheadings, you would retrieve all references on tamoxifen.

#### Inside this issue...

- [Information Interface Home](#)
- [Director's Desk](#)
- [Food & Drink Policy](#)
- [Wertlieb Ceremony](#)
- [The Himmelfarb Welcome Wagon](#)
- [Biomedical Communications](#)
- [E-Pharmacology Resources](#)
- [Document Delivery to Your Desktop](#)
- [The Encyclopedia of Life Sciences](#)
- [Off-campus Access Problems](#)
- [Spotlight on Academic Computing](#)
- [PEER Project](#)
- [Health Observance Corner](#)
- [Library Welcomes New Staff](#)
- [Collections & Acquisitions](#)
- [Database Digest](#)
- [Savvy Searcher](#)
- [Class Calender](#)
- [Faculty Publications](#)
- [Library Hours](#)
- [Library Assistance](#)

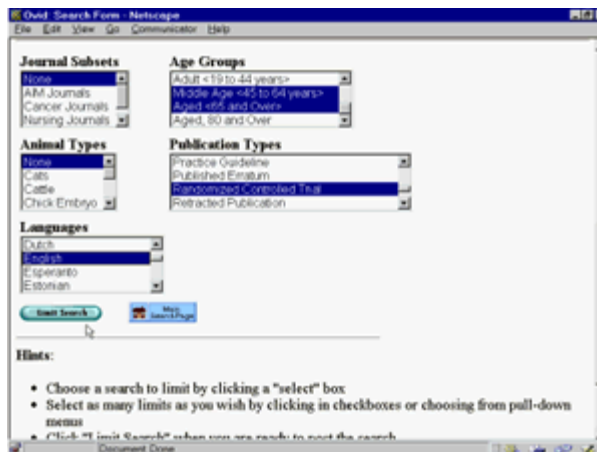




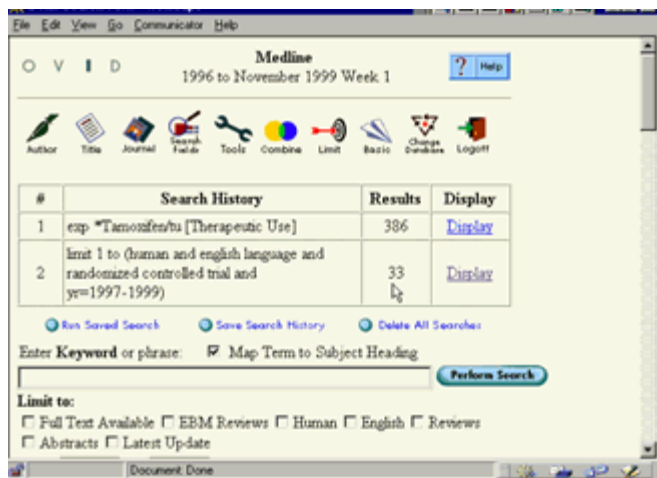
STEP 3 – Click on the Limit icon (the target). Notice that from this screen you can limit to English, Human and date.



STEP 4 – From the Limit Screen scroll down until you see the drop-down menus. Notice that you can limit by Age Groups, Language, and even Animal Types. Remember that we are looking for clinical studies on the drug tamoxifen. Select Randomized Controlled Trials from the alphabetical list of publication types. You could include other types of studies, such as Clinical Trials or Meta-Analysis. If you select more than one publication type, you must hold down the Ctrl key to retain your previous selections. Click on the LIMIT SEARCH button.



RESULTS – Your search retrieved 33 cites on randomized controlled trials conducted on the drug tamoxifen from 1997-1999.



The screenshot shows the Medline search interface. At the top, it says "Medline 1996 to November 1999 Week 1". Below this is a toolbar with icons for Author, Title, Journal, Search Fields, Tools, Combine, Limit, Basic, Check Database, and Logout. A table displays the search history:

#	Search History	Results	Display
1	exp *Tamoxifen/bu [Therapeutic Use]	386	<a href="#">Display</a>
2	limit 1 to (human and english language and randomized controlled trial and yr=1997-1999)	33	<a href="#">Display</a>

Below the table are buttons for "Run Saved Search", "Save Search History", and "Delete All Searches". There is a search input field with the text "Enter Keyword or phrase:" and a checked checkbox for "Map Term to Subject Heading". A "Perform Search" button is to the right. At the bottom, there are "Limit to:" options: "Full Text Available", "EBM Reviews", "Human", "English", "Reviews", "Abstracts", and "Latest Update", each with an unchecked checkbox.



[Comments](#) | [About](#) | [Intranet](#) | [SMHS](#) | [SoN](#) | [GWSPH](#) | [GWU](#)

Himmelfarb Health Sciences Library | The George Washington University  
2300 Eye St., NW, Washington, DC 20037 | Phone: (202) 994-2850 | Fax: (202) 994-4343

# Himmelfarb Health Sciences Library



[Home](#) [About](#) [Site Map](#) [?](#) [Ask Us](#)

## Information Interface

Office of Educational Resources  
School of Medicine and Health Care Sciences  
School of Public Health and Health Services

January/February 2002

Volume 30/Issue 1

### Faculty Publications

The George Washington University Medical Center  
Compiled by the Himmelfarb Health Sciences Library from MEDLINE  
through October 2001 and other sources

Acs, G., G. Hersch, et al. (2001). "A 20-year perspective on the changing use of hand over mouth (HOM) and restraint in postdoctoral pediatric dental education." Pediatr Dent **23**(4): 301-6.

Ahlgren, J. D. (2001). "Gastrointestinal malignancies. [Review] [77 refs]." Prim Care **28**(3): 647-60, vii.

Ahlgren, J. D. (2001). "Gastrointestinal malignancies. [Review] [77 refs].": 647-660.

Aly, H. Z. (2001). "Nasal prongs continuous positive airway pressure: a simple yet powerful tool." Pediatrics **108**(3): 759-61.

Aly, H. Z. (2001). "Nasal prongs continuous positive airway pressure: a simple yet powerful tool.": 759-761.

Bader, A. A., G. P. August, et al. (2001). "Hypertransaminasemia in two children with hyperthyroidism." J Pediatr Gastroenterol Nutr **32**(4): 484-6.

Balbus, J. M. and M. E. Lang (2001). "Is the water safe for my baby?. [Review] [75 refs]." Pediatr Clin North Am **48**(5): 1129-52, viii.

Balbus, J. M. and M. E. Lang (2001). "Is the water safe for my baby?. [Review] [75 refs].": 1129-1152.

Borenstein, D. G., J. W. O'Mara, Jr., et al. (2001). "The value of magnetic resonance imaging of the lumbar spine to predict low-back pain in asymptomatic subjects : a seven-year follow-up study.": 1306-1311.

Borum, M. L. (2001). "Colorectal cancer screening. [Review] [58 refs]." Prim Care **28**(3): 661-74, viii.

Borum, M. L. (2001). "Constipation: evaluation and management. [Review] [48 refs]." Prim Care **28**(3): 577-90, vi.

Borum, M. L. (2001). "Irritable bowel syndrome. [Review] [121 refs]." Prim Care **28**(3): 523-38, vi.

Borum, M. L. (2001). "Colorectal cancer screening. [Review] [58 refs].": 661-674.

Borum, M. L. (2001). "Constipation: evaluation and management. [Review] [48 refs].": 577-

### Inside this issue...

[Information Interface Home](#)

[Director's Desk](#)

[Food & Drink Policy](#)

[Wertlieb Ceremony](#)

[The Himmelfarb Welcome Wagon](#)

[Biomedical Communications](#)

[E-Pharmacology Resources](#)

[Document Delivery to Your Desktop](#)

[The Encyclopedia of Life Sciences](#)

[Off-campus Access Problems](#)

[Spotlight on Academic Computing](#)

[PEER Project](#)

[Health Observance Corner](#)

[Library Welcomes New Staff](#)

[Collections & Acquisitions](#)

[Database Digest](#)

[Savvy Searcher](#)

[Class Calender](#)

[Faculty Publications](#)

[Library Hours](#)

[Library Assistance](#)

590.

Borum, M. L. (2001). "Irritable bowel syndrome. [Review] [121 refs].": 523-538.

Carron, A. T., J. Lynn, et al. (1999). "End-of-life care in medical textbooks." Ann Intern Med **130**(1): 82-6.

Cohen, J. J. (2000). "White coats should not have union labels. [see comments]." N Engl J Med **342**(6): 431-4.

D'Angelo, L. J., S. E. Abdalian, et al. (2001). "Disclosure of serostatus by HIV infected youth: the experience of the REACH study. Reaching for Excellence in Adolescent Care and Health.": 72-79.

Daneker, B., P. L. Kimmel, et al. (2001). "Depression and marital dissatisfaction in patients with end-stage renal disease and in their spouses." Am J Kidney Dis **38**(4): 839-46.

Daneker, B., P. L. Kimmel, et al. (2001). "Depression and marital dissatisfaction in patients with end-stage renal disease and in their spouses.": 839-846.

Darr, K. (2001). "New role for managers: increasing the amount of bad news." Hosp Top **79**(1): 29-31.

Darr, K. (2001). "New role for managers: increasing the amount of bad news.": 29-31.

DeRenzo, E. G. and R. S. Olick (2000). "Should it be mandated that an HEC review a physician's decision not to honor a patient's or surrogate's refusal of treatment?" HEC Forum **12**(2): 161-5.

Etzel, R. A. (2001). "Indoor air pollutants in homes and schools. [Review] [60 refs]." Pediatr Clin North Am **48**(5): 1153-65.

Etzel, R. A. (2001). "Indoor air pollutants in homes and schools. [Review] [60 refs].": 1153-1165.

Etzioni, A. (1998). "HIV testing of infants: privacy and public health." Health Aff (Millwood) **17**(4): 170-83.

Fox, E., K. Landrum-McNiff, et al. (1999). "Evaluation of prognostic criteria for determining hospice eligibility in patients with advanced lung, heart, or liver disease. SUPPORT Investigators. Study to Understand Prognoses and Preferences for Outcomes and Risks of Treatments. [see comments]." Jama **282**(17): 1638-45.

Fugh-Berman, A. and F. Kronenberg (2001). "Red clover (*Trifolium pratense*) for menopausal women: current state of knowledge. [Review] [18 refs]." Menopause **8**(5): 333-7.

Gitterman, B. A. and C. F. Bearer (2001). "A developmental approach to pediatric environmental health. [Review] [73 refs]." Pediatr Clin North Am **48**(5): 1071-83.

Gitterman, B. A. and C. F. Bearer (2001). "A developmental approach to pediatric environmental health. [Review] [73 refs].": 1071-1083.

Goodwin, F. K. (2001). The difficult-to-treat patient wit bipolar disorder. Difficult-to-treat psychiatric patient. M. J. Dewan and R. W. Pies: 7-39.

Gruberg, L., R. Waksman, et al. (2001). "The effect of intracoronary radiation for the treatment of recurrent in-stent restenosis in patients with chronic renal failure.": 1049-1053.

Hoffman, E. P. and D. Dressman (2001). "Molecular pathophysiology and targeted therapeutics for muscular dystrophy. [Review] [58 refs]." Trends Pharmacol Sci **22**(9): 465-70.

Hotez, P. J. (2001). Hookworm infections. Essentials of tropical infectious diseases. R. L.

Guerrant, D. H. Walker and P. F. Weller. New York, Churchill Livingstone: 458-464.

Ikegami, T., A. M. Cypess, et al. (2001). "Modulation of glucagon receptor expression and response in transfected human embryonic kidney cells." Am J Physiol Cell Physiol **281**(4): C1396-402.

Khurana, P. S., C. Khurana, et al. (2001). "Hormone replacement therapy for prevention of coronary heart disease: current evidence. [Review] [39 refs]." Curr Atheroscler Rep **3**(5): 399-403.

Khurana, P. S., C. Khurana, et al. (2001). "Hormone replacement therapy for prevention of coronary heart disease: current evidence. [Review] [39 refs].": 399-403.

Kim, J. H., B. Sarani, et al. (2001). "HIV-positive patients with anal carcinoma have poorer treatment tolerance and outcome than HIV-negative patients." Dis Colon Rectum **44**(10): 1496-502.

Kim, J. H., B. Sarani, et al. (2001). "HIV-positive patients with anal carcinoma have poorer treatment tolerance and outcome than HIV-negative patients.": 1496-1502.

Lukish, J. R., M. R. Eichelberger, et al. (2001). "The use of a bioactive skin substitute decreases length of stay for pediatric burn patients." J Pediatr Surg **36**(8): 1118-21.

Lukish, J. R., M. R. Eichelberger, et al. (2001). "The use of a bioactive skin substitute decreases length of stay for pediatric burn patients.": 1118-1121.

Lynn, J., A. Wilkinson, et al. (1998). "Capitated risk-bearing managed care systems could improve end-of-life care." J Am Geriatr Soc **46**(3): 322-30.

Lynn, J., M. A. O'Connor, et al. (1999). "MediCaring: development and test marketing of a supportive care benefit for older people. [see comments]." J Am Geriatr Soc **47**(9): 1058-64.

Lynn, J., J. Teno, et al. (1999). "Dementia and advance-care planning: perspectives from three countries on ethics and epidemiology." J Clin Ethics **10**(4): 271-85.

Margolis, G. and R. Golesorkhi (2001). "Upward mobility. How to make the move from EMT to paramedic.": 30-39.

Miller, V. (2001). "HIV drug resistance: overview of clinical data." Jaapa **6**(3): 68-71.

Miller, V. (2001). "HIV drug resistance: overview of clinical data.": 68-71.

Moody, S. A. and C. Golden (1985). "Developmental biology research in space: issues and directions in the era of the international space station. [Review] [3 refs]." Dev Biol **228**(1): 1-5.

Noonan, F. P., J. A. Recio, et al. (2001). "Neonatal sunburn and melanoma in mice." Nature **413**(6853): 271-2.

Packer, R. J., P. Cogen, et al. (1999). "Medulloblastoma: clinical and biologic aspects. [Review] [90 refs]." Neuro-oncol **1**(3): 232-50.

Packer, R. J., P. Cogen, et al. (1999). "Medulloblastoma: clinical and biologic aspects. [Review] [90 refs].": 232-250.

Paulson, J. A. (2001). "Pediatric advocacy. [Review] [70 refs]." Pediatr Clin North Am **48**(5): 1307-18.

Paulson, J. A. (2001). "Pediatric advocacy. [Review] [70 refs].": 1307-1318.

Rickles, F. R. and M. N. Levine (2001). "Epidemiology of thrombosis in cancer." Acta Haematol **106**(1-2): 6-12.

Rickles, F. R. and M. N. Levine (2001). "Epidemiology of thrombosis in cancer.": 6-12.

Riegelman, R. (2001). "Reading clinical research. A flaw catching exercise.": 19-21.

Robb, A. S. (2001). "Eating disorders in children. Diagnosis and age-specific treatment. [Review] [13 refs]." Psychiatr Clin North Am 24(2): 259-70.

Rosenbaum, S., D. M. Frankford, et al. (1999). "Who should determine when health care is medically necessary? [see comments]." N Engl J Med 340(3): 229-32.

Sekhar, L. N., Z. T. Levine, et al. (2001). "Grading of meningiomas. [Review] [11 refs]." J Clin Neurosci 8(Suppl 1): 1-7.

Sekhar, L. N., Z. T. Levine, et al. (2001). "Grading of meningiomas. [Review] [11 refs].": 1-7.

Sidransky, H. and E. Verney (2001). "Effects of vitamins on hepatic nuclear binding of L-tryptophan." Amino Acids 20(2): 123-34.

Stein, M. A. (1999). "Unravelling sleep problems in treated and untreated children with ADHD. [see comments]." J Child Adolesc Psychopharmacol 9(3): 157-68.

Susman, J. (1998). "The role of nurses in decision making and violence prevention." J Psychosoc Nurs Ment Health Serv 36(7): 18-26.

Trout, H. H., 3rd and H. M. Tanner (2001). "A new vascular Endostaple: a technical description." J Vasc Surg 34(3): 565-8.



[Comments](#) | [About](#) | [Intranet](#) | [SMHS](#) | [SoN](#) | [GWSPH](#) | [GWU](#)

Himmelfarb Health Sciences Library | The George Washington University  
2300 Eye St., NW, Washington, DC 20037 | Phone: (202) 994-2850 | Fax: (202) 994-4343



# Himmelfarb Health Sciences Library



[Home](#) [About](#) [Site Map](#) [? Ask Us](#)

## Information Interface

Office of Educational Resources  
School of Medicine and Health Care Sciences  
School of Public Health and Health Services

January/February 2002

Volume 30/Issue 1

### Library Hours

#### Holiday Hours

Monday, January 21, 2002  
(Martin Luther King Jr. Birthday) **9:00am-Midnight**

Monday, February 18, 2002  
( President's Day) **9:00am-Midnight**

#### The Library is open to GW Medical Center Personnel

Monday-Friday **7:30 am-Midnight**

Saturday-Sunday **9:00 am-Midnight**

#### The Library is open to University Personnel:

Monday-Friday **7:30 am-6:00 pm**

#### The Library is open to the public:

Monday-Friday **7:30 am-2:00 pm**

Please be prepared to show ID after 2:00 pm.



### Inside this issue...

- [Information Interface Home](#)
- [Director's Desk](#)
- [Food & Drink Policy](#)
- [Wertlieb Ceremony](#)
- [The Himmelfarb Welcome Wagon](#)
- [Biomedical Communications](#)
- [E-Pharmacology Resources](#)
- [Document Delivery to Your Desktop](#)
- [The Encyclopedia of Life Sciences](#)
- [Off-campus Access Problems](#)
- [Spotlight on Academic Computing](#)
- [PEER Project](#)
- [Health Observance Corner](#)
- [Library Welcomes New Staff](#)
- [Collections & Acquisitions](#)
- [Database Digest](#)
- [Savvy Searcher](#)
- [Class Calender](#)
- [Faculty Publications](#)
- [Library Hours](#)
- [Library Assistance](#)