

Himmelfarb Health Sciences Library, The George Washington University
Health Sciences Research Commons

Information Interface (1999 - 2009)

Himmelfarb Health Sciences Library

1-2001

Information Interface - Volume 29, Issue 1 - January/February 2001

George Washington University, Himmelfarb Health Sciences Library

Follow this and additional works at: <https://hsrc.himmelfarb.gwu.edu/ii>

 Part of the [Library and Information Science Commons](#), and the [Medicine and Health Sciences Commons](#)

Recommended Citation

George Washington University, Himmelfarb Health Sciences Library, "Information Interface - Volume 29, Issue 1 - January/February 2001" (2001). *Information Interface (1999 - 2009)*. Paper 14.
<https://hsrc.himmelfarb.gwu.edu/ii/14>

This Newsletter is brought to you for free and open access by the Himmelfarb Health Sciences Library at Health Sciences Research Commons. It has been accepted for inclusion in Information Interface (1999 - 2009) by an authorized administrator of Health Sciences Research Commons. For more information, please contact hsrc@gwu.edu.

Himmelfarb Health Sciences Library



[Home](#) [About](#) [Site Map](#) [? Ask Us](#)

Information Interface

Office of Educational Resources
School of Medicine and Health Care Sciences
School of Public Health and Health Services

January/February 2001

Volume 29/Issue 1

Director's Desk

Himmelfarb's renovation continues.

Himmelfarb's third floor has a new look! There are 72 carrels with electricity and eight tables that can seat 4 people each. Up to 104 people can study in this area! In order to brighten this floor, carpet and ceiling tiles have been replaced. The walls have been painted. For the area nearest the elevator the pillars and border are now GW blue.

Since the summer, the Terrace Level was created in order to house the book collection. In addition, three well-lit study rooms were carved from this new level. To reserve these new study rooms call 202-994-2856 or stop by the desk in the Bloedorn AV Study Center. The Library Administration hopes that students, faculty and staff like these improvements. We realize that these changes have been disruptive and appreciate your cooperation during these renovations.

*Anne Linton, Director,
Library Services*



Inside this issue

[Information Interface Home](#)

[Director's Desk](#)

[Proxy Server Debut at GW](#)

[Board Review Resources](#)

[The Partners Project](#)

[Instructional Technology Lab](#)

[Collections & Acquisitions](#)

[Frequently Asked Questions](#)

[Savvy Searcher](#)

[Class Calender](#)

[Faculty Publications](#)

[Library Hours](#)

[Library Assistance](#)

Himmelfarb Health Sciences Library



[Home](#) [About](#) [Site Map](#) [? Ask Us](#)

Information Interface

Office of Educational Resources
School of Medicine and Health Care Sciences
School of Public Health and Health Services

January/February 2001

Volume 29/Issue 1

Proxy Server Debuts at GW

Last fall The George Washington University began testing a proxy server to facilitate access to electronic resources by University faculty, staff and students. Proxy server technology has been successfully implemented at many colleges and universities around the country.

The proxy server allows your computer to be recognized as a GW computer when connecting to the Himmelfarb Library resources. From any off campus location, "looking" like a GW computer permits access to our on-campus resources including full text electronic journals like the American Journal of Kidney Diseases, Annals of Thoracic Surgery and Heart and databases like Clinical Textbooks, Harrison's Online and Scientific American Medicine. Users access these resources by clicking on the on-campus links.

The proxy server has been available for several months now. Many faculty, staff and students have participated in the initial testing of the proxy server. The reports have been uniformly positive. Comments like "I use the proxy server on an almost daily basis. It is essential to my teaching and other activities because I am off campus" and "The proxy server is invaluable. I use it everyday" are examples of the responses Himmelfarb Library received during a recent user survey. If you would like to add your comments to the survey, please email them to Patricia Wilson at mlbphw@gwumc.edu. Names will be kept confidential We are sending these responses to the team that has been developing and supporting the proxy server test to let them know just how much their work is valued.



Inside this issue...

[Information Interface Home](#)

[Director's Desk](#)

[Proxy Server Debut at GW](#)

[Board Review Resources](#)

[The Partners Project](#)

[Instructional Technology Lab](#)

[Collections & Acquisitions](#)

[Frequently Asked Questions](#)

[Savvy Searcher](#)

[Class Calender](#)

[Faculty Publications](#)

[Library Hours](#)

[Library Assistance](#)

Himmelfarb Health Sciences Library



[Home](#) [About](#) [Site Map](#) [? Ask Us](#)

Information Interface

Office of Educational Resources
School of Medicine and Health Care Sciences
School of Public Health and Health Services

January/February 2001

Volume 29/Issue 1

Board Reviews Resources

With the start of the new year comes the renewed focus on preparing for the Board exams. The Himmelfarb Library has a variety of resources, both print and electronic, to help you prepare.

The library owns several software review and test programs including Appleton & Lange's ALert USMLE (steps 1-3), Kaplan's Practice Questions and Sample Test (step 1), ExamMaster's Medical Subject Review, and the PreTest series. In addition, the library has several audiotape review series, including Emory University's Internal Medicine Review and Eurekanet's Audio Study Tapes. All of our electronic resources are available for use in the Bloedorn Audio Visual Study Center (BAVSC) on the third floor of the library, and the audiotapes may be checked out for use outside of the library as well.

The Himmelfarb Library also has an extensive collection of print review books for all three steps of the Board exams. Many of the review books are part of our reserve collection and circulate for three-hour periods. The selection of print review materials is varied, ranging from broad overviews of topics (step 1, step 2, step 3) to books on specific topics (biochemistry, pharmacology, pathology, pediatrics, emergency medicine, obstetrics/gynecology and more).

All of our board review materials are included in the library's catalog, as well as on our Board Review Resources web pages <http://libguides.gwumc.edu/step1>.



Inside this issue...

[Information Interface Home](#)

[Director's Desk](#)

[Proxy Server Debut at GW](#)

[Board Review Resources](#)

[The Partners Project](#)

[Instructional Technology Lab](#)

[Collections & Acquisitions](#)

[Frequently Asked Questions](#)

[Savvy Searcher](#)

[Class Calender](#)

[Faculty Publications](#)

[Library Hours](#)

[Library Assistance](#)

Himmelfarb Health Sciences Library



[Home](#) [About](#) [Site Map](#) [? Ask Us](#)

Information Interface

Office of Educational Resources
School of Medicine and Health Care Sciences
School of Public Health and Health Services

January/February 2001

Volume 29/Issue 1

The Partners Project

Last year, the National Library of Medicine funded 2 grant proposals written by the Himmelfarb Library. The goals of the proposal are to provide health information to the clinic staffs, patients, and clients of the Non-Profit Clinic Consortium (NPCC) in Washington, DC.

The Partners for Health Information Project, provides the NPCC clinics with a computer dedicated to staff, a computer with Internet access dedicated to patients and clients, licenses for MD Consult and document delivery services. The grant also provides funds to develop a Partners web page to access health information and community resources. Workshops at the Library and visits to the clinics teach staff and patients how to use and evaluate health information on the Internet.

Over 40 clinic staff members have attended Library workshops on consumer health information, database searching, and Web navigation. Clinics, including La Clinica del Pueblo, the Spanish Catholic Center, Columbia Road Health Services, Washington Free Clinic, and the Community of Hope, have invited us to their staff meetings to view demonstrations of Partners resources. These demonstrations have introduced over 100 clinic staff members to the Partners project.

Thanks to the commitment of clinic staff and the dedicated participation of our ISCOPEs and Health Advocates team, Partners is visiting waiting rooms at the clinics to introduce patients and clients to the web. In the last several months, Partners volunteers have begun training clients at the Max Robinson Center, the Teen Group at Mary's Center, patient volunteer trainers at SOME, clients at Family and Medical Counseling Services, and patients at Bread for the City.

Staff and patients have greeted the project with great enthusiasm. Many clinics are sharing their health promotion materials to post on the Partners web page. Others are interested in sharing their peer education materials with a broader community through the web page. Through the workshops and meetings, the Partners project has begun to form a network of clinic staffs and clients of the District of Columbia's safety net clinics. They have the opportunity to work more closely together to meet their common social and health needs.

If you'd like to volunteer your time to visit the clinics or add material to the Partners web page, please contact Karyn Pomerantz, Partners for Consumer Health Information, c/o the MISPH, Ross 202, 994-2976 or kpomeran@gwu.edu. Visit the Partners web page at <http://www.gwumc.edu/partners>.



Inside this issue...

[Information Interface Home](#)

[Director's Desk](#)

[Proxy Server Debut at GW](#)

[Board Review Resources](#)

[The Partners Project](#)

[Instructional Technology Lab](#)

[Collections & Acquisitions](#)

[Frequently Asked Questions](#)

[Savvy Searcher](#)

[Class Calender](#)

[Faculty Publications](#)

[Library Hours](#)

[Library Assistance](#)

Himmelfarb Health Sciences Library



[Home](#) [About](#) [Site Map](#) [? Ask Us](#)

Information Interface

Office of Educational Resources
School of Medicine and Health Care Sciences
School of Public Health and Health Services

January/February 2001

Volume 29/Issue 1

Instructional Technology Lab

The Instructional Technology Lab, under the direction of William Koffenberger, provides faculty members the leadership and support to explore new methods and incorporate new technologies into the educational process. They utilize the latest technology and tools in instructional design, develop collaborative coalitions among faculty to promote innovative teaching methods, and support the development of new projects to promote instruction.

The ITL talented staff provides workshops, seminars, hands-on technology experimentation and curriculum development consultations to faculty throughout the entire university. To learn more about the Instructional Technology Lab, visit their website at <http://www.itl.gwu.edu> or give them a call at 994-3347.



Inside this issue...

[Information Interface Home](#)

[Director's Desk](#)

[Proxy Server Debut at GW](#)

[Board Review Resources](#)

[The Partners Project](#)

[Instructional Technology Lab](#)

[Collections & Acquisitions](#)

[Frequently Asked Questions](#)

[Savvy Searcher](#)

[Class Calender](#)

[Faculty Publications](#)

[Library Hours](#)

[Library Assistance](#)

Himmelfarb Health Sciences Library

THE GEORGE
WASHINGTON
UNIVERSITY
MEDICAL CENTER
WASHINGTON DC

[Home](#) [About](#) [Site Map](#) [? Ask Us](#)

Information Interface

Office of Educational Resources
School of Medicine and Health Care Sciences
School of Public Health and Health Services

January/February 2001

Volume 29/Issue 1

New Collections & Acquisitions

New Physical Therapy Titles

BAETEN, ANGELA M. *DOCUMENTING PHYSICAL THERAPY: THE REVIEWER PERSPECTIVE*
RM713 .B34 1999

BATAVIA, MITCH. *THE WHEELCHAIR EVALUATION: A PRATICAL GUIDE*
RD757 .W4 B37 1998

BOTTOMLEY, JENNIFER M. *QUICK REFERENCE DICTIONARY FOR PHYSICAL THERAPY*
RM696.5 .Q85 2000 (Ref. 2)

BROOKS-SCOTT, SANDRA. *HANDBOOK OF MOBILIZATION IN THE MANAGEMENT OF CHILDREN WITH NEUROLOGICAL DISORDERS*
RJ496 .M68 B76 1999

CLARKSON, HAZEL M. *MUSCULOSKELETAL ASSESSMENT: JOINT RANGE OF MOTION AND MANUAL MUSCLE STRENGTH*
(2ND ED)
RC925.7 .C53 2000

CUTTER, NANCY C. *HANDBOOK OF MANUAL MUSCLE TESTING*
RZ251 .A65 H36 1999

EVANS, PATRICIA RAE. *PREPARING FOR THE PHYSICAL THERAPIST LICENSURE EXAMINATION*
RM701.6 .E94 1999

FAGERSON, TIMOTHY L. *THE HIP HANDBOOK*
RD772 .F34 1998

GOLDSTEIN, TRUDY SANDLER. *GERIATRIC ORTHOPAEDICS: REHABILITATIVE MANAGEMENT OF COMMON PROBLEMS* (2ND ED)
RD732.3 A44 G64 1999

MARDER, RICHARD A. *SPORTS INJURIES OF THE ANKLE AND FOOT*
RD563 .M359 1997

PRENTICE, WILLIAM E. *REHABILITAION TECHNIQUES IN SPORTS MEDICINE*
RD97 .R44 1999

SCOTT, RONALD W. *PROMPTING LEGAL AWARENESS TO PHYSICAL AND*

Inside this issue

[Information Interface Home](#)

[Director's Desk](#)

[Proxy Server Debut at GW](#)

[Board Review Resources](#)

[The Partners Project](#)

[Instructional Technology Lab](#)

[Collections & Acquisitions](#)

[Frequently Asked Questions](#)

[Savvy Searcher](#)

[Class Calender](#)

[Faculty Publications](#)

[Library Hours](#)

[Library Assistance](#)

OCCUPATIONAL THERAPY
KF3821.Z9 S367 1997

STEPHENSON, REBECCA G. *OBSTETRIC AND GYNECOLOGIC CARE IN PHYSICAL THERAPY*
RG129 .P45 018 2000

TAPPAN, FRANCES M. *TAPPAN'S HANDBOOK OF HEALING MASSAGE TECHNIQUES: CLASSIC, HOLISTIC, AND EMERGING METHODS*
RM721 .T2178 1998

VAN DEUSEN, JULIA. *ASSESSMENT IN OCCUPATIONAL THERAPY AND PHYSICAL THERAPY*
RM735.65 .A86 1997



[Comments](#) | [About](#) | [Intranet](#) | [SMHS](#) | [SoN](#) | [GWSPH](#) | [GWU](#)

Himmelfarb Health Sciences Library | The George Washington University
2300 Eye St., NW, Washington, DC 20037 | Phone: (202) 994-2850 | Fax: (202) 994-4343

Himmelfarb Health Sciences Library



[Home](#) [About](#) [Site Map](#) [? Ask Us](#)

Information Interface

Office of Educational Resources
School of Medicine and Health Care Sciences
School of Public Health and Health Services

January/February 2001

Volume 29/Issue 1

Frequently Asked Questions

I notice a lot of paper being used printing articles from electronic sources in the library. Are there ways to cut down on the amount of printing being done and help save money and trees?

Print the minimum that you need. Use Netscape's Print Preview command (available in the File menu) to figure out which pages contain the text that you need and then print only those pages. This works particularly well with long documents and book chapters - you may only need a few paragraphs of a document that is 30+ pages long.

Email the information to yourself. MEDLINE, other Ovid databases, and the Library catalog will allow you to email citations to yourself. MEDLINE will even allow you to email an article's full-text if it's available.

Take notes. If you only need a call number or citation or a brief piece of information, jot it down. Scratch paper and pencils are available at the Reference Desk.

Only one copy. In deference to your fellow students, please don't print multiple copies of items.

As always, if you need assistance or have a question, please don't hesitate to ask at the Reference Desk or send an email to himmelfarb@gwu.edu

What would YOU like to KNOW?

The Himmelfarb Library Staff tries to publish articles of interest to the School of Medicine and Health Sciences, the School of Public Health and Health Services and to the Medical Center. We'd like your input. What topics would you like to see more information about? What services would you like to see highlighted? Suggestions are welcomed. Call the Reference Desk at 202-994-2850 or email us at himmelfarb@gwu.edu.

Inside this issue...

[Information Interface Home](#)

[Director's Desk](#)

[Proxy Server Debut at GW](#)

[Board Review Resources](#)

[The Partners Project](#)

[Instructional Technology Lab](#)

[Collections & Acquisitions](#)

[Frequently Asked Questions](#)

[Savvy Searcher](#)

[Class Calender](#)

[Faculty Publications](#)

[Library Hours](#)

[Library Assistance](#)



[Comments](#) | [About](#) | [Intranet](#) | [SMHS](#) | [SoN](#) | [GWSPH](#) | [GWU](#)

Himmelfarb Health Sciences Library | The George Washington University
2300 Eye St., NW, Washington, DC 20037 | Phone: (202) 994-2850 | Fax: (202) 994-4343

Himmelfarb Health Sciences Library



[Home](#) [About](#) [Site Map](#) [? Ask Us](#)

Information Interface

Office of Educational Resources
School of Medicine and Health Care Sciences
School of Public Health and Health Services

January/February 2001

Volume 29/Issue 1

Savvy Searcher

MD Consult

Last spring, Himmelfarb Library added a new database to its collection. MDConsult is a medical information website that provides access to medical information for health professionals. MDConsult emphasizes full-text information and includes textbooks, journal articles, practice guidelines, drug information, and patient education materials.

To use MDConsult, you should sign-up for a login name and password at the Reference Desk. This allows you to create your own individual MDConsult account, within Himmelfarb Library's institutional account. Using your login and password, you can use MDConsult from any computer with Internet access simply by accessing MDConsult's webpage <http://www.mdconsult.com>.

Please remember to click on "Log Off" when you are finished using MDConsult. Because MDConsult is a shared resource at GWUMC, it is important to definitively end your session to allow another person to log on to MDConsult, and so that you will be able to access MDConsult when you need it.

Searching MDConsult: All Areas

You can search MDConsult for medical information in several ways. You can choose to search all of MDConsult at once, or you may choose to search a single area (ex: Reference Books or Journal Literature). To search all of MDConsult at once, use the universal search form.

Inside this issue...

[Information Interface Home](#)

[Director's Desk](#)

[Proxy Server Debut at GW](#)

[Board Review Resources](#)

[The Partners Project](#)

[Instructional Technology Lab](#)

[Collections & Acquisitions](#)

[Frequently Asked Questions](#)

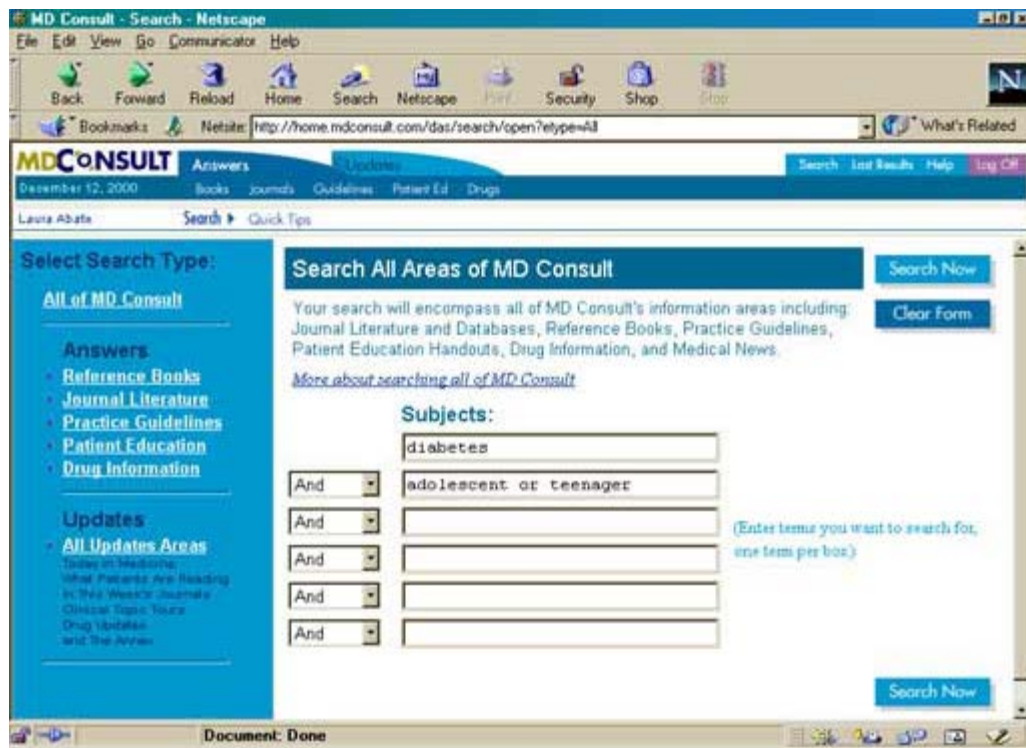
[Savvy Searcher](#)

[Class Calender](#)

[Faculty Publications](#)

[Library Hours](#)

[Library Assistance](#)

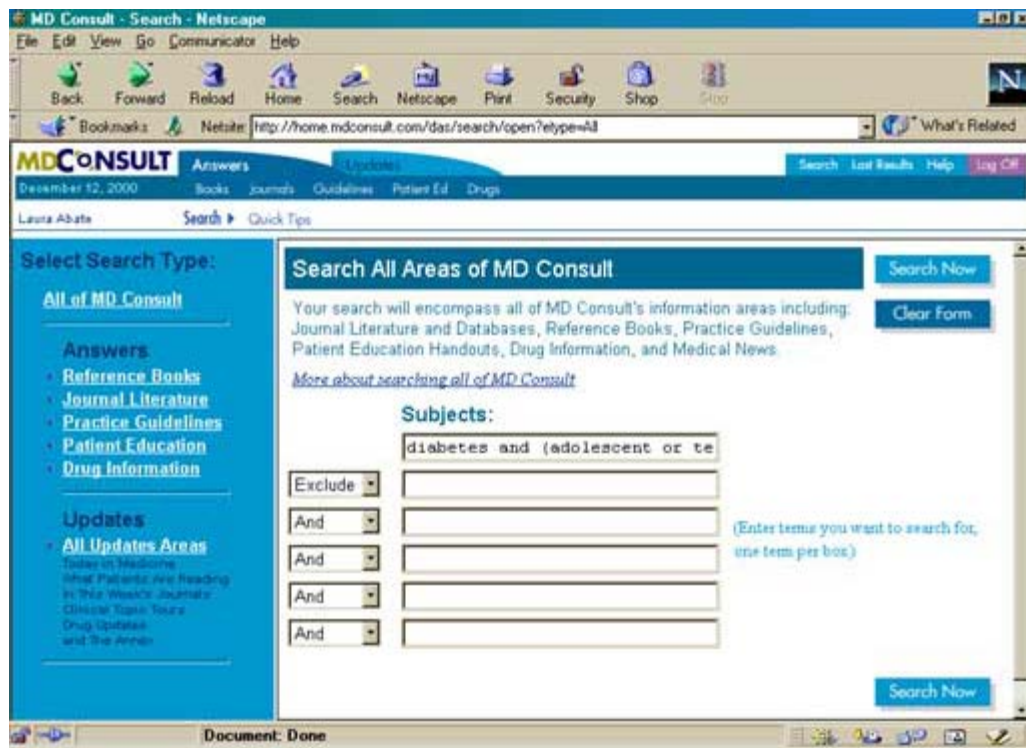


The universal search form displays the areas to be searched in a column on the left side of the screen, and the search form on the right side of the screen.

You can enter your search terms in the Subjects boxes and use the pull-down menus to the left of the boxes to specify whether you want to use "and," "or," or "exclude" to connect the terms. In the search entered above, you will retrieve items that contain the term "diabetes" as well as either the term "adolescent" or the term "teenager." If you changed the pull-down menu to "exclude" you would retrieve items with the term "diabetes" that did not mention adolescents or teenagers.

In addition to using multiple subject boxes and the pull-down menus to construct searches, you can enter multiple search terms in a single search box connecting the terms with "and," "or," or "not" (Note: when using a single search box, use "not" rather than "exclude"). For instance, the search on diabetes and adolescents/teenagers could also be entered as follows:

diabetes and (adolescent or teenager)



Truncation

When entering search terms, you can use truncation in order to find all terms that begin with the same letters. MDConsult does some truncation automatically and will find common alternate endings and plurals for words including "e," "s," "ies," and "ing."

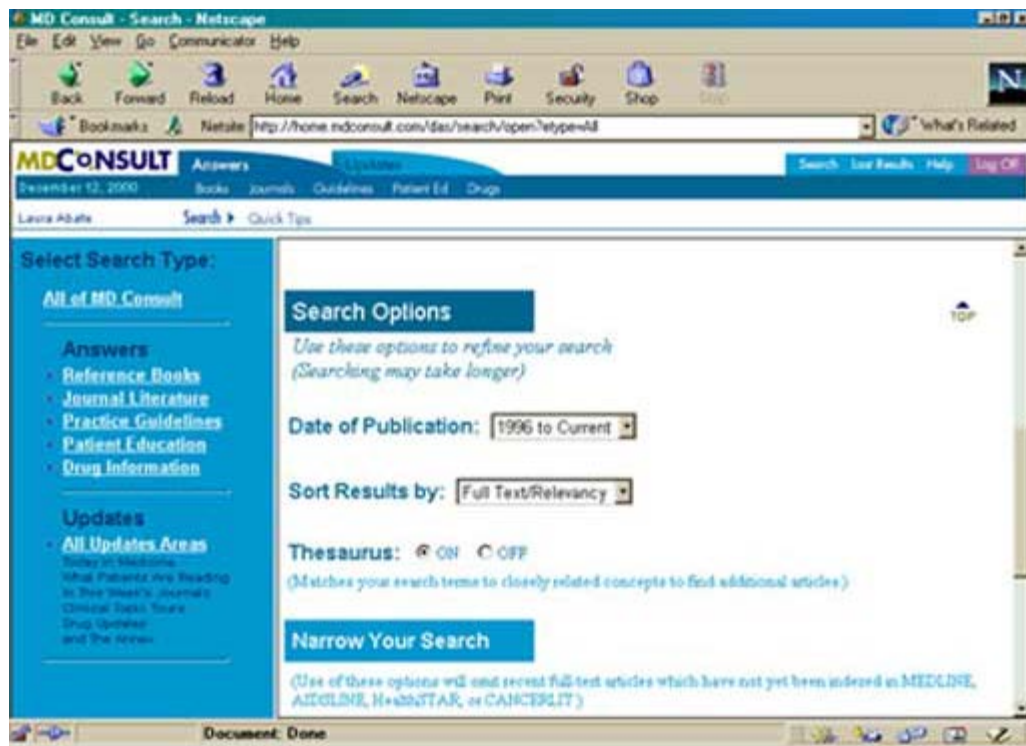
For additional truncation in MDConsult, two truncation symbols are available. The question mark (?) is used for single character truncation, and an asterisk (*) is used for unlimited truncation. For example, the search term "adolescen?" will retrieve items that contain the word adolescent, while the search term "adolescen*" will retrieve adolescent, adolescents, adolescence, adolescence, adolescentium, adolescenthood, and adolescentis.

MDConsult requires that search terms used with truncation symbols contain at least three characters.

Searching MDConsult: Journal Literature

MDConsult's Journal Literature area contains the MEDLINE, AIDSLINE, CANCERLIT, and HealthSTAR databases, as well as additional articles from MDConsult's full-text database.

In addition to searching using the Subjects boxes as in the universal search, the MDConsult screen for searching journal literature provides additional methods for focusing your search.



The **Date of Publication** pull-down menu allows you to select a year range for journal articles. The date ranges permit you to select a set of recent years (1999-Present, 1990-Present, etc.), or to select an older year range (1966-1979).

The **Sort Results** option allows you to specify the order in which you would like to view your search results. The default setting in this area is "Full Text/Relevancy" which means that all full-text items will be displayed as the first results of your search. The full-text results will be sorted from most to least relevant. Following the full-text holdings, remaining items will be listed. These remaining items will also be sorted by relevancy.

The Sort Results option can be reset so that search results are sorted by Relevancy where the most relevant articles are displayed first whether or not they are available in full-text, or by Publication Date so that most recent articles are displayed first.

The MDConsult **Thesaurus** is set by default to the "on" position. The thesaurus matches your term to closely related terms and synonyms and searches on all terms. For instance, if you entered the term "insulin dependent diabetes," the database would also search for equivalent terms such as "juvenile onset diabetes" and "brittle diabetes." If you reset the thesaurus feature to "off," MDConsult will search for the terms only as you enter them and not search using synonyms.

Some MDConsult search features can be useful for locating articles that are more relevant to your search request, but will eliminate some full-text articles available through MDConsult. The **Clinical Focus** and **Study Subjects** settings can be used to narrow your search to find articles of a particular type or about a specific study group, but some full-text articles will not be retrieved if you use these settings. This happens because very recent full-text articles do not yet have Medical Subject Headings (MeSH) assigned to them, and the Clinical Focus and Study Subjects settings use information stored in MeSH terms to identify relevant articles.

Clinical Focus allows you to choose from a list of common subheadings to specify articles about an aspect of a disease or condition such as therapy, etiology, diagnosis, or prognosis. Clinical Focus also allows you to select common publication types to describe the type of article that you're looking for: literature reviews, opinions, trials, or Cochrane reviews.

Article Study Subjects permits you to specify age groups and whether you're looking for studies conducted on humans or animals. Selecting an age group and specifying "human"

may help you find articles that are more clinically relevant by excluding laboratory research results and research about groups outside your topic area.

To really focus your search, you may search by **specific fields**. MDCConsult allow you to specify specific fields to search by using field codes in square brackets after a term. For instance, you may search for "diabetes mellitus," when it appears as a MeSH term rather than just anywhere in the article by typing:

diabetes mellitus[sh]

The field codes for the most commonly searched fields are:

Article Title	ti
Publication Title	jn
Major MeSH	majr
MeSH	sh
Abstract	ab
Language	mdcla
Publication Type	pt

You can also use a field code to specify which of the available databases you would like to search. "mdcsource" is the field code for the source database, while the databases available are represented as MEDLINE (MI), AIDSLINE (AL), CANCERLIT (CL), and HealthSTAR (HS). To indicate that you want to search MEDLINE only, you would type:

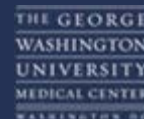
MI[mdcsource]

Using MDCConsult Effectively

MDCConsult is a convenient and valuable reference tool, particularly when you cannot be in the Library. However, MDCConsult cannot provide in-depth information on every topic. You may need to supplement the information that you find in MDCConsult with additional print or electronic resources. For assistance locating specific information or for a source recommendation, don't hesitate to contact the Library's Reference desk at 202-994-2850 or himmelfarb@gwu.edu.



Himmelfarb Health Sciences Library



[Home](#) [About](#) [Site Map](#) [? Ask Us](#)

Information Interface

Office of Educational Resources
School of Medicine and Health Care Sciences
School of Public Health and Health Services

January/February 2001

Volume 29/Issue 1

Faculty Publications

The George Washington University Medical Center
Compiled by the Himmelfarb Health Sciences Library from MEDLINE
through December 2000 and other sources

August, G. P. (2001). Short stature, diagnosis. Essence of office pediatrics. J. A. Stockman and J. A. Lohr. Philadelphia, W.B. Saunders : 375-376.

Bautista, O. M., R. P. Bain, et al. (Oct). "A flexible stochastic curtailing procedure for the log-rank test." Control Clin Trials 2000 21 (5): 428-39.

Bennett, H. J., Ed. (2001). The doctor's book of humorous quotations: a treasury of quotes, jokes and one-liners about doctors and health care. Philadelphia, Hanley and Belfus, Inc.

Blatt, B., G. Kallenberg, et al. (Aug). "'Advising Oliver Mann"--a case-based, small-group orientation to medical school." Acad Med 2000 75 (8): 858-60.

Bosch, J. P. and S. Q. Lew (2001). The digestive tract. Handbook of Dialysis. J. T. Daugirdas, P. G. Blake and T. S. Ing. Philadelphia, Lippincott William & Wilkins : 601-610.

Byrne, J., A. Nussbaum-Blask, et al. (4). "Prevalence of Mullerian duct anomalies detected at ultrasound." Am J Med Genet 2000 Sep 94 (1): 9-12.

Campos, J. M. (2000). "Microbiology laboratory informatics." Infections in medicine 17 : 540-541.

Cohn, F. "The ethics of end-of-life care for prison inmates. [Review] [47 refs]." .

Coyne, K. S., C. F. Lundergan, et al. (12). "Relationship of infarct artery patency and left ventricular ejection fraction to health-related quality of life after myocardial infarction: the GUSTO-I Angiographic Study experience." Circulation 2000 Sep 102 (11): 1245-51.

Drew, A. E., A. E. Derbez, et al. (Oct). "Nicotinic receptor-mediated regulation of dopamine transporter activity in rat prefrontal cortex." Synapse 2000 38 (1): 10-6.

Eastaugh, S. R. "New ventures require accurate risk analyses and adjustments." .

Elgart, M. L. "Current treatments for scabies and pediculosis." .

Foote, S. M. and L. Etheredge (Jul Aug). "Increasing use of new prescription drugs: a case study." Health Aff (Millwood) 2000 19 (4): 165-70.

Gaillard, W. D. (2000). "Structural and functional imaging in children with partial epilepsy. [Review] [93 refs]." Ment Retard Dev Disabil Res Rev 6 (3): 220-6.

Inside this issue...

[Information Interface Home](#)

[Director's Desk](#)

[Proxy Server Debut at GW](#)

[Board Review Resources](#)

[The Partners Project](#)

[Instructional Technology Lab](#)

[Collections & Acquisitions](#)

[Frequently Asked Questions](#)

[Savvy Searcher](#)

[Class Calender](#)

[Faculty Publications](#)

[Library Hours](#)

[Library Assistance](#)

Geiter, L., Ed. (2000). Ending neglect: the elimination of tuberculosis in the united states. Washington, DC, National Academy Press.

Giordano, J. M. (31). "Surgical treatment of Takayasu's arteritis." Int J Cardiol 2000 Aug 75 (Suppl 1): S123-8.

Gulya, A. J. (2000). Evaluation of hearing loss. Primary care medicine: office of evaluation and management of the adult patient. A. H. Goroll, L. A. May and A. G. Mulley. Philadelphia, Lippincott Williams and Wilkins : 1108-1112.

Gulya, A. J. (2000). Evaluation of tinnitus. Primary care medicine: office of evaluation and management of the adult patient. A. H. Goroll, L. A. May and A. G. Mulley. Philadelphia, Lippincott Williams and Wilkins : 1123-1125.

Gulya, A. J. (2000). Approach to the patient with otitis. Primary care medicine: office of evaluation and management of the adult patient. A. H. Goroll, L. A. May and A. G. Mulley. Philadelphia, Lippincott Williams and Wilkins : 1125-1127.

Hsia, J., E. Kemper, et al. (Sep). "The importance of health insurance as a determinant of cancer screening: evidence from the Women's Health Initiative." Prev Med 2000 31 (3): 261-70.

Jolly, B. T. (2000). Motor vehicles crashes. Trauma management: an emergency medicine approach. P. C. Ferrera, S. A. Colucciello, J. A. Marx, V. P. Verdile and M. A. Gibbs. St. Louis, Mosby : 575-587.

Kimmel, P. L. (2001). Psychology and rehabilitation. Handbook of Dialysis. J. T. Daugirdas, P. G. Blake and T. S. Ing. Philadelphia, Lippincott William & Wilkins : 413-419.

Lindsay, J. (2001). Diagnosis and treatment of diseases of the aorta. Hurst's the heart. V. Fuster, R. W. Alexander and R. A. O'Rourke. New York, McGraw-Hill. 2 .

Niederhauser, V. (2001). Pediatric primary care. Manual of nursing practice. S. M. Nettina. Philadelphia, Lippincott : 1267-1300.

Olijnyk, J. (2001). Standards of care, ethical and legal issues. Manual of nursing practice. S. M. Nettina. Philadelphia, Lippincott : 2-23.

Schmandt, S. M., R. J. Packer, et al. (Mar). "Spontaneous regression of low-grade astrocytomas in childhood. [Review] [17 refs]." Pediatr Neurosurg 2000 32 (3): 132-6.

Schwartz, R. H. (2001). Cocaine use. Essence of office pediatrics. J. A. Stockman and J. A. Lohr. Philadelphia, W.B. Saunders : 78-79.

Sekhar, L. N. and J. Strugar (2000). Chordomas and chondrosarcomas. Cranial Base Surgery. J. T. Robertson, H. B. Coakham and J. H. Robertson. London, Churchill Livingstone : 397-415.

Shesser, R., K. Holtermann, et al. (Sep). "Results of provider self-adjudication using the prudent layperson standard compared with the managed care organization's emergency department claim review process [see comments]." Ann Emerg Med 2000 36 (3): 212-8.

Soldin, S. J. (2000). "Evaluation of the abbott pcx point of care glucose analyzer in a pediatric hospital." Clinical biochemistry 33 (4): 319-321.

Verghese, S. T., W. A. McGill, et al. (2000). "Comparison of three techniques for internal jugular vein cannulation in infants." Paediatr Anaesth 10 (5): 505-11.

Walsh, C. and H. G. Rushton (Aug). "Diagnosis and management of teratomas and epidermoid cysts. [Review] [55 refs]." Urol Clin North Am 2000 27 (3): 509-18.

White, P. H. (1998). "Psychosocial aspects of rheumatic disease in childhood and adolescence. [Review] [32 refs]." Adolesc Med 9 (1): 171-7, vii.

Wilson, W. R. (2000). Approach to epistaxis. Primary care medicine: office of evaluation and management of the adult patient. A. H. Goroll, L. A. May and A. G. Mulley. Philadelphia, Lippincott Williams and Wilkins : 1112-1115. Wolfe, M. S. (2001). Fever in the returning traveler. Current therapy of infectious disease. D. Schlossberg. St. Louis, Mosby : 304-306.



[Comments](#) | [About](#) | [Intranet](#) | [SMHS](#) | [SoN](#) | [GWSPH](#) | [GWU](#)

Himmelfarb Health Sciences Library | The George Washington University
2300 Eye St., NW, Washington, DC 20037 | Phone: (202) 994-2850 | Fax: (202) 994-4343

Himmelfarb Health Sciences Library



[Home](#) [About](#) [Site Map](#) [? Ask Us](#)

Information Interface

Office of Educational Resources
School of Medicine and Health Care Sciences
School of Public Health and Health Services

January/February 2001

Volume 29/Issue 1

Library Hours

Holiday Hours

Mon., Feb. 19
(Washington's Birthday) **9:00 am-Midnight**

The Library is open to GW Medical Center Personnel

Monday-Friday **7:30 am-Midnight**

Saturday-Sunday **9:00 am-Midnight**

The Library is open to University Personnel:

Monday-Friday **7:30 am-6:00 pm**

The Library is open to the public:

Monday-Friday **7:30 am-2:00 pm**

Please be prepared to show ID after 2:00 pm.



Inside this issue

[Information Interface Home](#)

[Director's Desk](#)

[Proxy Server Debut at GW](#)

[Board Review Resources](#)

[The Partners Project](#)

[Instructional Technology Lab](#)

[Collections & Acquisitions](#)

[Frequently Asked Questions](#)

[Savvy Searcher](#)

[Class Calender](#)

[Faculty Publications](#)

[Library Hours](#)

[Library Assistance](#)

Himmelfarb Health Sciences Library



[Home](#) [About](#) [Site Map](#) [? Ask Us](#)

Information Interface

Office of Educational Resources
School of Medicine and Health Care Sciences
School of Public Health and Health Services

January/February 2001

Volume 29/Issue 1

Library Assistance

Administration	994-3528
AV Study Center	994-2856
Interlibrary Loan	994-2860
Reference Department	994-2850
Photocopy Service(HPS)	994-2860
Circulation	994-2962
Classroom Display Services	994-2856

Mailbox: himmelfarb@gwu.edu
Webpage: <http://himmelfarb.gwu.edu>



Inside this issue...

- [Information Interface Home](#)
- [Director's Desk](#)
- [Proxy Server Debut at GW](#)
- [Board Review Resources](#)
- [The Partners Project](#)
- [Instructional Technology Lab](#)
- [Collections & Acquisitions](#)
- [Frequently Asked Questions](#)
- [Savvy Searcher](#)
- [Class Calender](#)
- [Faculty Publications](#)
- [Library Hours](#)
- [Library Assistance](#)