

4-2-2020

Covid-19 Clinical Update 4/2/2020

George Washington University

Follow this and additional works at: <https://hsrc.himmelfarb.gwu.edu/infectiousdiseaseupdates>

Recommended Citation

George Washington University, "Covid-19 Clinical Update 4/2/2020" (2020). *GW Infectious Disease Updates*. Paper 4.

<https://hsrc.himmelfarb.gwu.edu/infectiousdiseaseupdates/4>

This Presentation is brought to you for free and open access by the GW Covid-19 Collection at Health Sciences Research Commons. It has been accepted for inclusion in GW Infectious Disease Updates by an authorized administrator of Health Sciences Research Commons. For more information, please contact hsrc@gwu.edu.



1. EPIDEMIOLOGY

2. PATHOPHYSIOLOGY

3. TESTING

4. TREATMENT

5. GW UPDATES

COVID-19 UPDATE

HANA AKSELROD, MD, MPH

GW DIVISION OF INFECTIOUS DISEASES

4/2/2020

EPIDEMIIOLOGY

4/2/2020



Known coronavirus cases in D.C., Maryland and Virginia

There are a total of **4,062** reported cases in the region.

District of Columbia

590

11 deaths

Maryland

1,986

34 deaths

Virginia

1,486

37 deaths

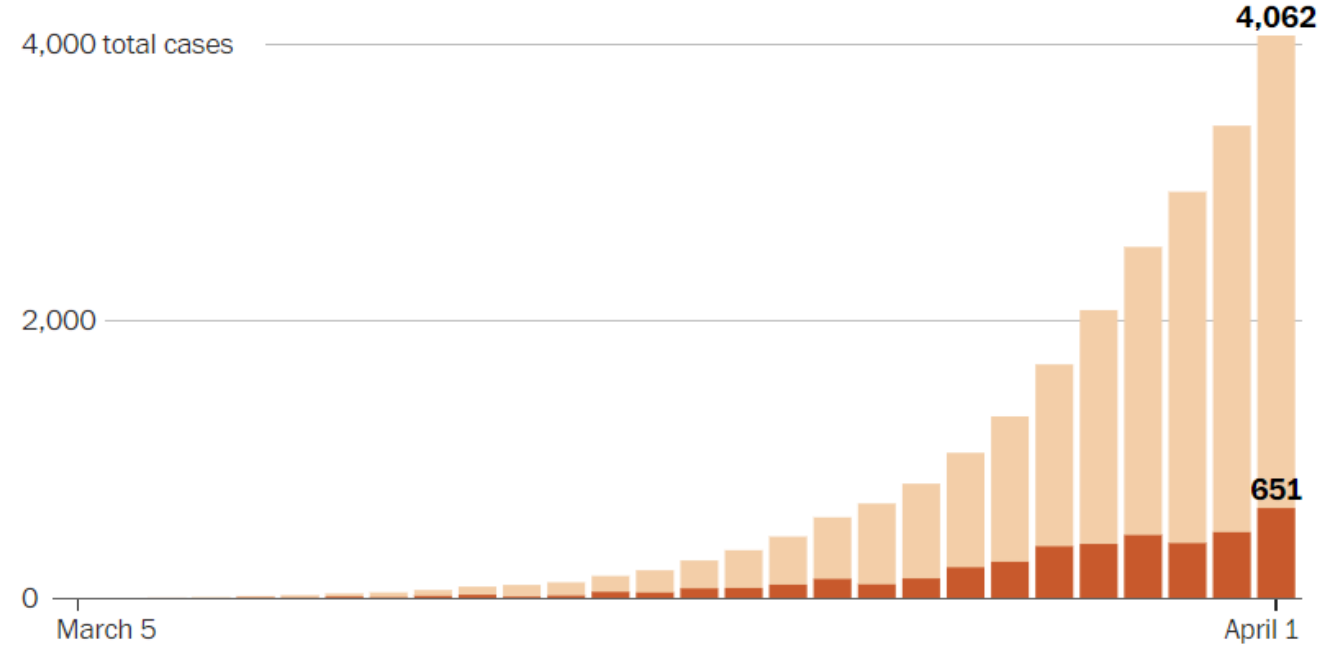
By **Rebecca Tan, Fenit Nirappil, Kevin Uhrmacher, Gabriel Florit and Danielle Rindler**

Updated April 1 at 8:38 p.m.

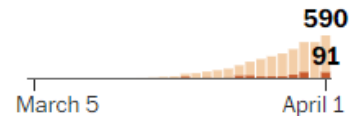
Ward	Total Positive Cases
1	65
2	60
3	70
4	85
5	76
6	101
7	60
8	44

Total cases reported in the District, Maryland and Virginia

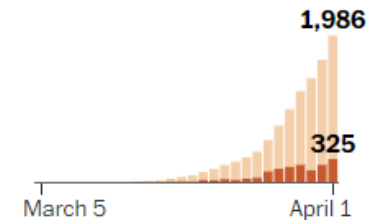
■ New cases each day



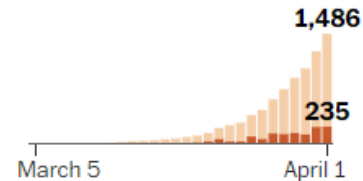
District of Columbia



Maryland



Virginia

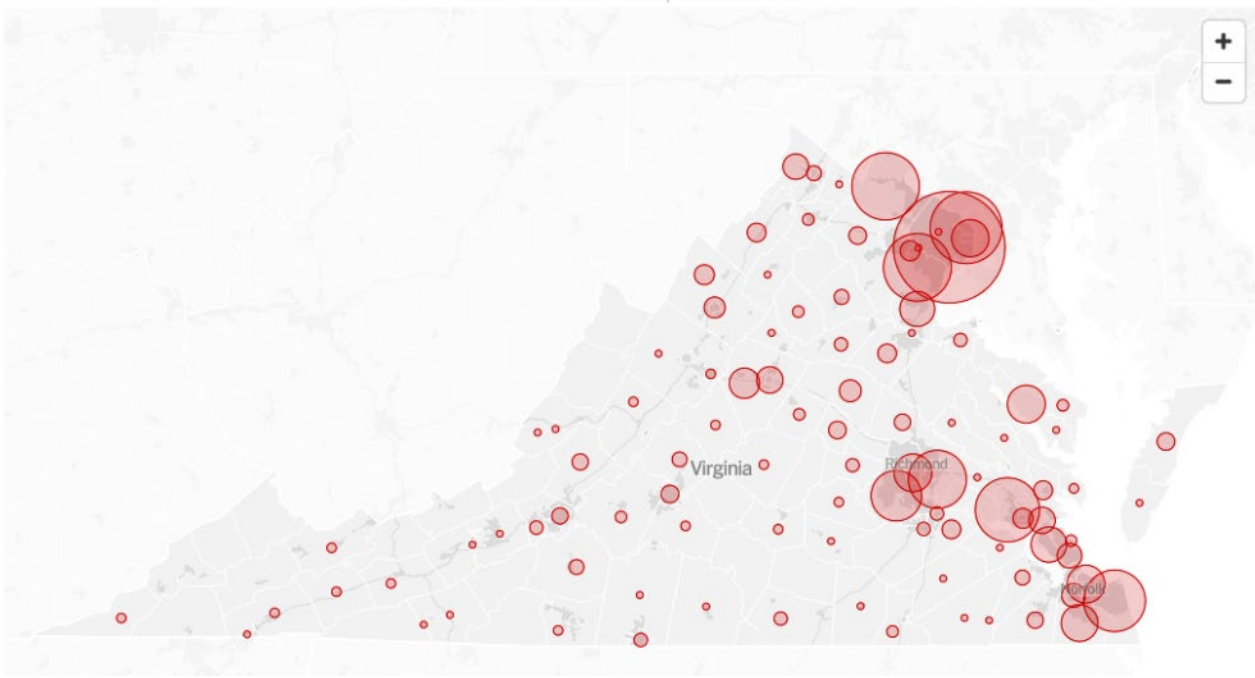


Confirmed cases in Virginia

Total cases Deaths New cases



Zoom and hover over map for more detail

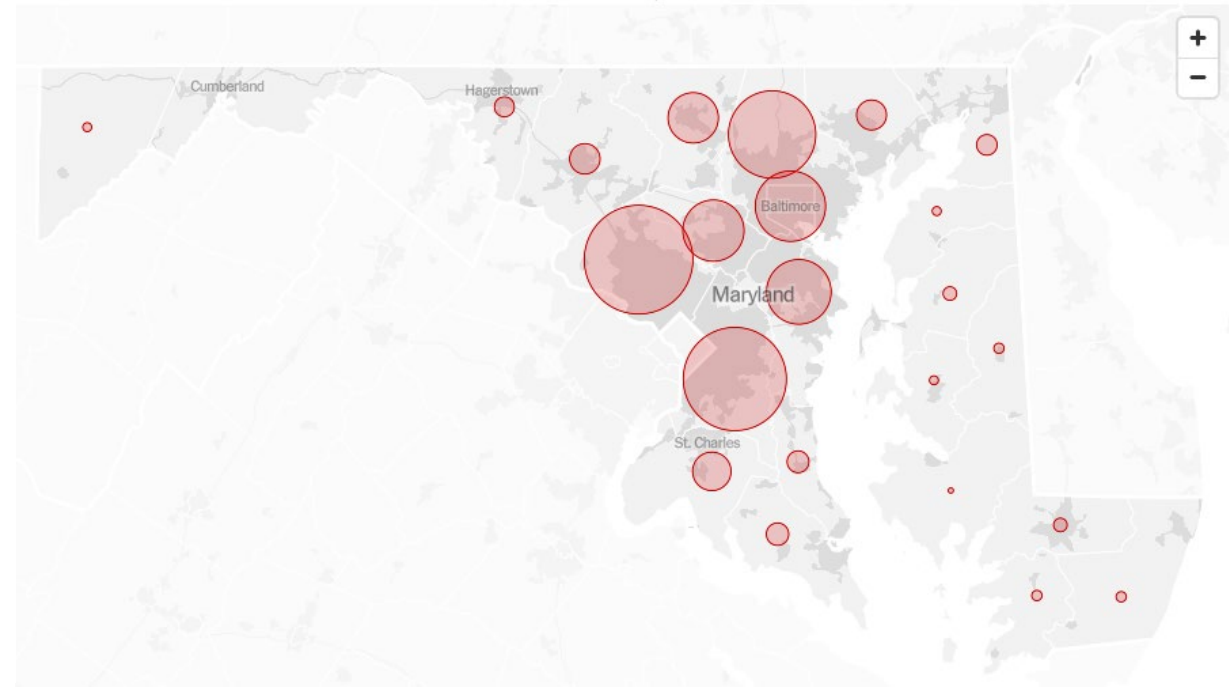


Confirmed cases in Maryland

Total cases Deaths New cases



Zoom and hover over map for more detail





Narrative: Genomic analysis of COVID-19 ...



Explore the content by scrolling the left hand side (or click on the arrows), and the data visualizations will change accordingly. Clicking "explore the data yourself" (top right of page) will replace this narrative with a set of controls so that you may interact with the data.

Genomic analysis of COVID-19 spread. Situation report 2020-03-27.

Author: Sidney M. Bell, Nicola Müller, Emma Hodcroft, Cassia Wagner, James Hadfield, Misja Ilcisin, Richard Neher, Trevor Bedford¹

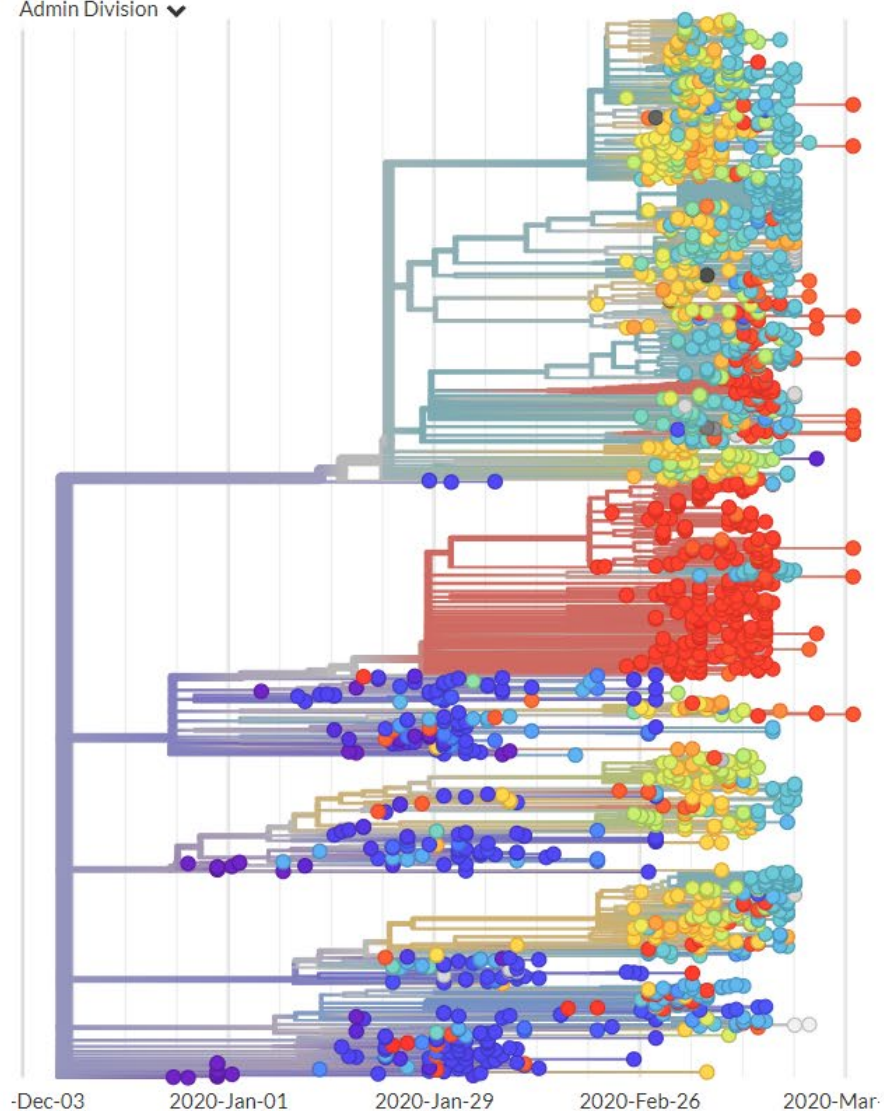
¹ Fred Hutch, Seattle, USA; Biozentrum, Basel, Switzerland; CZI, CA, USA

Created: 2020 March 27

This report uses publicly shared genomic data to track the spread of COVID-19. These reports are updated weekly.

Phylogeny

Admin Division ▼



Transmissions

EXPLORE THE DATA YOURSELF



PATHOPHYSIOLOGY

4/2/2020



Co-Morbidities

122,653 confirmed cases of COVID-19 reported to the CDC through 3/28/2020

Complete data available for 7,162 (5.8%) sample

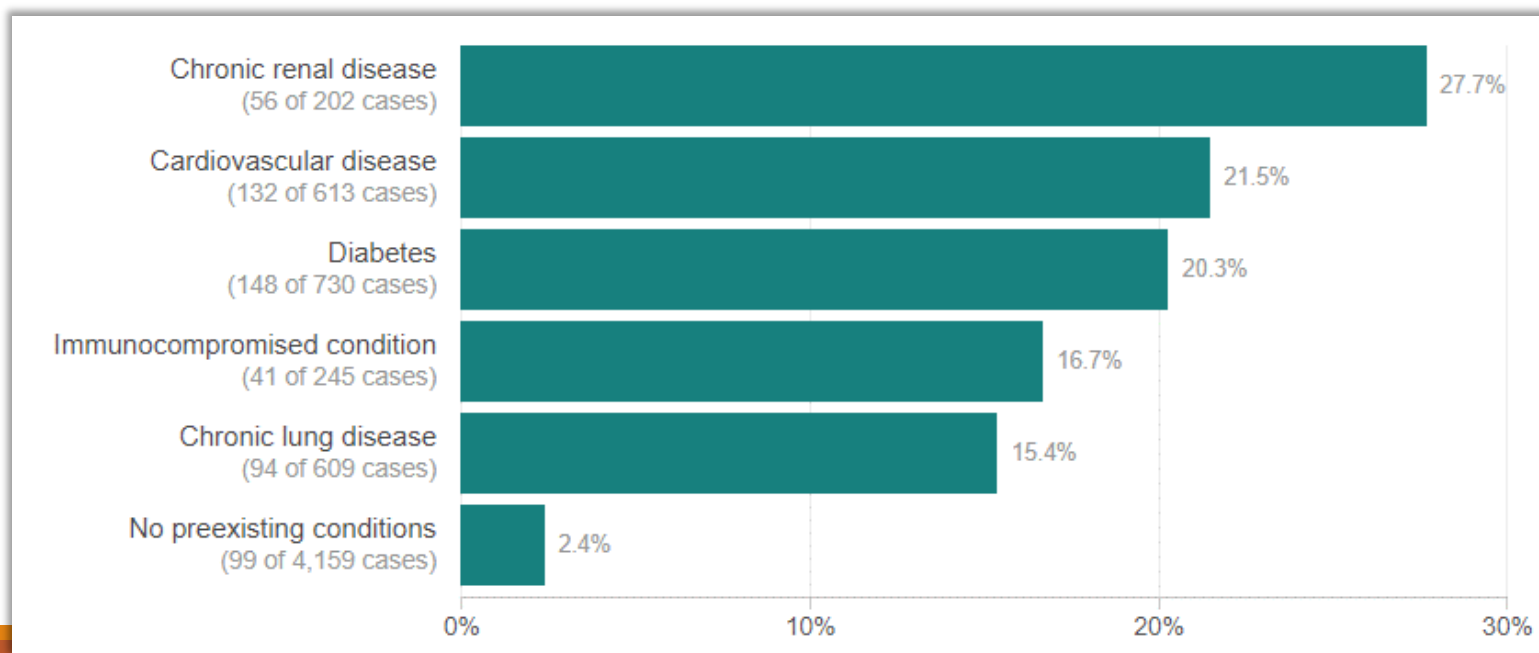
Level of care required for those with ≥ 1 underlying comorbidity:

- Outpatient: 27% (1,388/5,143)
- Inpatient, no ICU: 71% (732/1,037)
- ICU care: 78% (348/457)

Mortality: 184/7,162 (2.6%)

- All in patients aged ≥ 19 years

173/184 (94%) of deaths were in those with ≥ 1 comorbidity



TESTING

4/2/2020



Testing News

Abbott Labs' 5-Minute COVID-19 Test Gets FDA Approval



BY ELLEN GLOVER | MARCH 30, 2020



Rapid NAAT test

Updated Mar 31, 2020 - Health

CORRECTION: The FDA has not approved a two-minute coronavirus test

Axios

Axios incorrectly reported on Tuesday that the Food and Drug Administration had signed off on a new and faster type of coronavirus test. We have removed the inaccurate story from our website.

What happened: A medical distribution company called Bodysphere said in a press release that the FDA had granted an "emergency use authorization" that would allow patients to get a diagnosis in only about two minutes.

- Axios reprinted that incorrect information, based on the press release.
- But the FDA confirmed Wednesday that it has not issued such an authorization. No two-minute

Antibody test

Testing at GW



How to order a COVID Test in CERNER:		March 31st, 2020
	Inpatient	Outpatient – ED Visits
Symptomatic (PUI)	SARS-CoV-2 PCR Assay Molecular Path	2019 Novel Coronavirus (CoVID-19) Outpatient, NAA LC 139900
Admitted Patients	SARS-CoV-2 Real Time PCR	N/A
Pre Procedural Testing	SARS-CoV-2 PCR Assay Molecular Path	SARS-CoV-2 PCR Assay Molecular Path
HCW who is PUI	SARS-CoV-2 PCR Assay Molecular Path	SARS-CoV-2 PCR Assay Molecular Path
Special Circumstances	SARS-CoV-2 PCR Assay Molecular Path	SARS-CoV-2 PCR Assay Molecular Path
Recovering HCW 3 days after symptom resolution	N/A	SARS-CoV-2 PCR Assay Molecular Path
Asymptomatic HCW day 9 after high risk exposure	N/A	SARS-CoV-2 PCR Assay Molecular Path

TREATMENT

4/2/2020



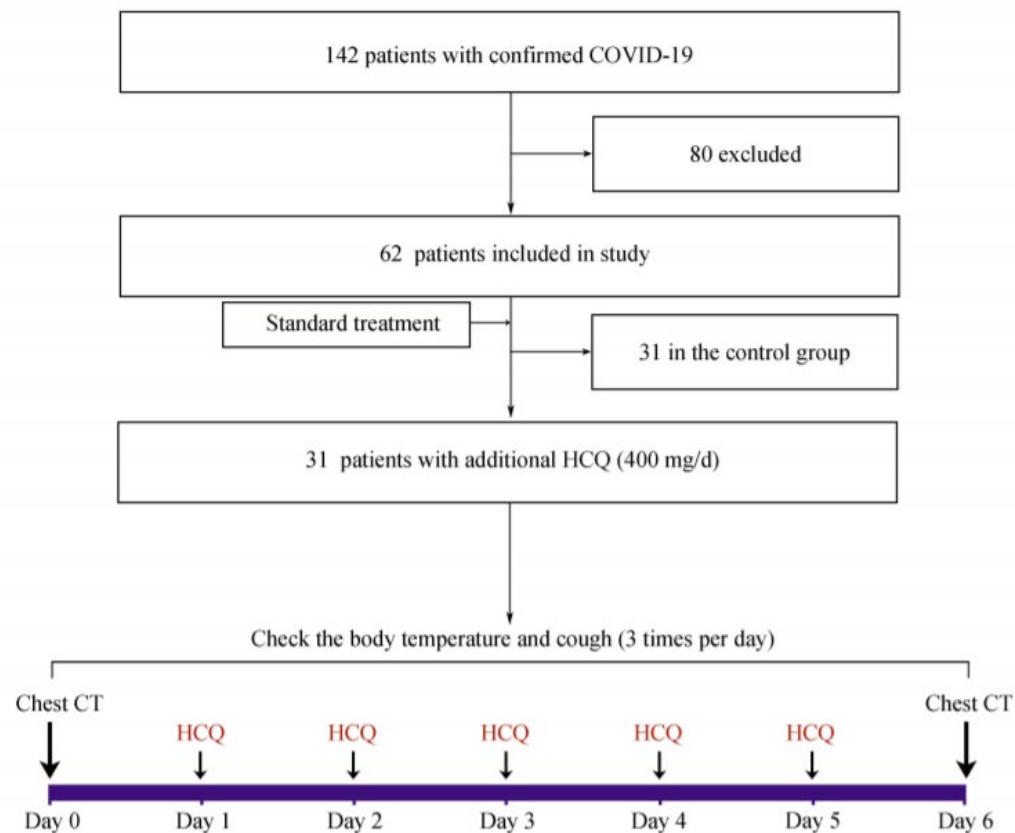
Hydroxychloroquine Update

Efficacy of hydroxychloroquine in patients with COVID-19: results of a randomized clinical trial

Zhaowei Chen, Jijia Hu, Zongwei Zhang, Shan Jiang, Shoumeng Han, Dandan Yan, Ruhong Zhuang, Ben Hu, Zhan Zhang

doi: <https://doi.org/10.1101/2020.03.22.20040758>

This article is a preprint and has not been certified by peer review [what does this mean?]. It reports new medical research that has yet to be evaluated and so should not be used to guide clinical practice.



Characteristics	All	Control	HCQ	P value
Cases, n	62	31	31	
Age, mean (SD)	44.7 (15.3)	45.2 (14.7)	44.1 (16.1)	0.8809
Sex, n (%)				0.7991
Male	29 (46.8%)	15 (48.3%)	14 (45.2%)	
Female	33 (53.2%)	16 (51.7%)	17 (54.9%)	
Fever, day (SD) ^a	2.6 (1.0)	3.2 (1.3)	2.2 (0.4)	0.0008
Cough, day (SD) ^b	2.4 (1.1)	3.1 (1.5)	2.0 (0.2)	0.0016
Progressed to severe illness	4 (6.5 %)	4 (12.9 %)	0	
Adverse effects	2 (3.2 %)	0	2 (6.4 %)	

Table 1: Characteristics of patients in this trial.

Coronavirus en Nouvelle-Aquitaine : Dix hospitalisations après de la prise d'hydroxychloroquine en automédication en une semaine

SANTE Certains patients ont dû être pris en charge dans un service de réanimation

C.C. | Publié le 30/03/20 à 16h34 — Mis à jour le 30/03/20 à 17h33

120
COMMENTAIRES

5,8k
PARTAGES



Un pharmacien montre une boîte de "plaquenil" le 23 mars à Rennes. — Damien Meyer / AFP

À LIRE AUSSI



30/03/20 | CONFINEMENT

A Bordeaux, Darwin accueille un centre pour les SDF et leurs chiens



30/03/20 | SANTE

A Bordeaux, préfecture et ARS déconseillent de désinfecter les rues



30/03/20 | SANTE

La situation « très complexe » des gens du voyage face au confinement

+ D'ACTU



Convalescent Plasma

Table 1. Clinical Characteristics of SARS-CoV-2-Infected Patients Who Received Convalescent Plasma

	Patient				
	1	2	3	4	5
Sex	Male	Male	Female	Female	Male
Age, y	70s	60s	50s	30s	60s
Weight, kg	55	85	60	41.5	87
Smoking	No	No	No	No	No
Blood type	B	B	B	A	B
Coexisting chronic diseases	None	Hypertension; mitral insufficiency	None	None	None
Disease presentation and course					
Estimated incubation period, d ^a	1	7	3	7	15
Interval between symptom onset and admission, d	2	4	2	2	3
Interval between admission and plasma transfusion, d	22	10	20	19	20
Complications prior to plasma transfusion	Bacterial pneumonia; severe ARDS; MODS	Bacterial pneumonia; fungal pneumonia; severe ARDS; myocardial damage	Severe ARDS	Severe ARDS	Severe ARDS
Most severe disease classification	Critical	Critical	Critical	Critical	Critical
Treatments					
Steroids	Methylprednisolone	Methylprednisolone	Methylprednisolone	Methylprednisolone	Methylprednisolone
Antivirals	Lopinavir/ritonavir; interferon alfa-1b; favipiravir	Lopinavir/ritonavir; arbidol; darunavir	Lopinavir/ritonavir; interferon alfa-1b;	Interferon alfa-1b; favipiravir	Lopinavir/ritonavir; interferon alfa-1b

Table 2. Comparison of Viral Load, Clinical Indexes, and Laboratory Results Before and After Convalescent Plasma Transfusion (continued)

	Patient				
	1	2	3	4	5
IL-6, pg/mL (normal range, 0-7)					
Before transfusion	70.5	438.2	63.9	79.1	87.8
Day 1 posttransfusion	74.9	NT	118.5	39.3	NT
Day 3 posttransfusion	34.5	1045.0	67.0	25.8	797.9
Day 5 posttransfusion	24.1	334.1	590.5	NT	NT
Day 7 posttransfusion	30.8	29.8	174.3	34.0	69.9
Day 12 posttransfusion	6.1	31.8	NT	2.7	54.9
Length of hospital stay, d	Remains hospitalized	Remains hospitalized	53	51	55
Current status as of March 25, 2020	Stable, still receiving mechanical ventilation	Stable, still receiving mechanical ventilation	Discharged home	Discharged home	Discharged home



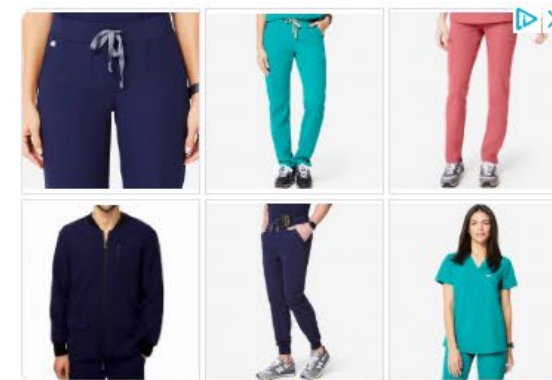
GW UPDATES

4/2/2020



'This Can Happen to You': 29-Year-Old Coronavirus Patient Shares Warning

By Doreen Gentzler and Patricia Fantis • Published March 31, 2020 • Updated on April 1, 2020 at 7:58 am



FIGS FIGS® Scrubs

Trending Stories



CORONAVIRUS
The Latest: 4,690 Coronavirus Cases Diagnosed in DC, Maryland, Virginia



CORONAVIRUS
What's Allowed in DC, Maryland, Virginia Under Stay-

13 days until peak resource use on
April 15, 2020

Resources needed for COVID-19 patients on peak date

All beds needed 882 beds	→	All beds available 1,093 beds	→	Bed shortage 0 beds
ICU beds needed 136 beds	→	ICU beds available 66 beds	→	ICU bed shortage 70 beds
Invasive ventilators needed 109 ventilators				

