

Himmelfarb Health Sciences Library, The George Washington University
Health Sciences Research Commons

Information Interface (1999 - 2009)

Himmelfarb Health Sciences Library

5-2009

Information Interface - Volume 37, Issue 2 - May/ June 2009

George Washington University, Himmelfarb Health Sciences Library

Follow this and additional works at: <https://hsrc.himmelfarb.gwu.edu/ii>

 Part of the [Library and Information Science Commons](#), and the [Medicine and Health Sciences Commons](#)

Recommended Citation

George Washington University, Himmelfarb Health Sciences Library, "Information Interface - Volume 37, Issue 2 - May/June 2009" (2009). *Information Interface (1999 - 2009)*. Paper 1.
<https://hsrc.himmelfarb.gwu.edu/ii/1>

This Newsletter is brought to you for free and open access by the Himmelfarb Health Sciences Library at Health Sciences Research Commons. It has been accepted for inclusion in Information Interface (1999 - 2009) by an authorized administrator of Health Sciences Research Commons. For more information, please contact hsrc@gwu.edu.

Himmelfarb Health Sciences Library



[Home](#) [About](#) [Site Map](#) [? Ask Us](#)

Information Interface

Office of Educational Resources
School of Medicine and Health Care Sciences
School of Public Health and Health Services

May/June 2009

Volume 37/Issue 2

Database Digest: World Development Indicators

Is it important for your work to have access to country-specific information and data? The Himmelfarb Library can connect you to resources to help you locate high-quality, highly relevant information.

Library of Congress: Country Studies

Describes and analyzes the historical setting and the social, economic, political, and national security systems and institutions of countries throughout the world.



Source: Panel A: 1900-2000 hours less chapter 3 for details; panel B: May 2009 base chapter 3 for details; panel C: 1900-2000 hours less chapter 3 for details.

CIA World Factbook

Country snapshots provide facts and figures on geography, people, government, economy, transportation, the military and transnational issues. This information is also available as a print publication and can be found in Gelman Library's Reference section at call number Ready Reference G122 .U56 2007.

World Development Indicators

This World Bank database supplies country-level comparisons of economic development data. Users can create custom reports that compare countries by specific development statistics.

Image citation: World Bank (2003). Being near prosperous places is important, but not enough. Foreign market potential, 2003. [Online image]. Retrieved June 1, 2009 from <http://siteresources.worldbank.org/INTWDR2009/Resources/Map-6.6.gif>.



Inside this issue...

- [Information Interface Home](#)
- [Database Digest](#)
- [Research Tools - Latest & Greatest](#)
- [Clinical Information Tools](#)
- [Color Printing Now Available](#)
- [Healthy DC - Go Local Launched](#)
- [Visit Himmelfarb Library on Facebook](#)
- [Historia Medicinæ - New GWUMC Journal](#)
- [E-Resources: Appropriate & Inappropriate Use](#)
- [Fall Reserves Deadline](#)
- [MedStudy Video Board Reviews](#)
- [Sexual Violence Prevention](#)
- [Board Review Collection: USMLE Step 1](#)
- [Art Show](#)
- [Class Calendar](#)
- [Faculty Publications](#)
- [Library Hours](#)
- [Library Assistance](#)

Himmelfarb Health Sciences Library



Home About Site Map ? Ask Us

Information Interface

Office of Educational Resources
 School of Medicine and Health Care Sciences
 School of Public Health and Health Services

May/June 2009

Volume 37/Issue 2

Research tools - latest & greatest

Himmelfarb's librarians wanted to share information about some exciting new and/or redesigned research tools.

WorldWideScience.org

One stop search of 50 national science portals (e.g. CERN, Science.gov, Indian Academy of Sciences, etc.) While not all content is free or full text, this tool is useful to explore where you may want to dig deeper. For example, search for "avian influenza" to see the spectrum of information resources available. Developed by the US Department of Energy, [Office of Scientific and Technical Information \(OSTI\)](#).

ToxSeek

This meta-search engine for toxicology and environmental health offers a single search tool for searching the major NIH databases and resources from the National Library of Medicine. The real power of the database is the sophisticated natural language processing and artificial intelligence used to identify key words and present result clusters in an index on the left side of the screen. This tool is useful for identifying particular concepts and uncovering a specific aspect or focus for more in depth searching. For example, search for "chlorine in drinking water." Developed by the US National Library of Medicine, [Specialized Information Services Division](#).

GoPubMed

GoPubMed searches PubMed data and provides the results in a visual format using classifications by [Gene Ontology](#) and [Medical Subject Headings](#). Search results are semantically organized in different categories such as What, Who, Where and When. The What, Who, Where, and When category lists on the left side of the screen allow you to narrow down your results set. GoPubMed was developed by the German company [Transinsight](#).

ReQall and Google Voice

These two services offer tools for mobile professionals. Both feature a telephone speech to text transcription service for short messages (i.e. up to 30 seconds). ReQall features reminder and sharing functions that direct your voicemail transcription to yourself or your colleagues via email or IM, and can sync the message with your iCal, Outlook, or Google calendar. When you think of things you need to remember, you can call Google Voice or ReQall, say what you're thinking, your message is turned into text, which can then be sent to you or someone else as text or voice. ReQall can also record a future task into your calendar.



Inside this issue...

- Information Interface Home
- Database Digest
- Research Tools - Latest & Greatest
- Clinical Information Tools
- Color Printing Now Available
- Healthy DC - Go Local Launched
- Visit Himmelfarb Library on Facebook
- Historia Medicinae - New GWUMC Journal
- E-Resources: Appropriate & Inappropriate Use
- Fall Reserves Deadline
- MedStudy Video Board Reviews
- Sexual Violence Prevention
- Board Review Collection: USMLE Step 1
- Art Show
- Class Calender
- Faculty Publications
- Library Hours
- Library Assistance

Image created using [Wordle](#)



[Comments](#) | [About](#) | [Intranet](#) | [GWUMC](#) | [Inside GWUMC](#) | [GWU](#)

Himmelfarb Health Sciences Library | The George Washington University Medical Center
2300 Eye St., NW, Washington, DC 20037 | Phone: (202) 994-2850 | Fax: (202) 994-4343

Himmelfarb Health Sciences Library



[Home](#) [About](#) [Site Map](#) [? Ask Us](#)

Information Interface

Office of Educational Resources
 School of Medicine and Health Care Sciences
 School of Public Health and Health Services

May/June 2009

Volume 37/Issue 2

Clinical Information Tools

Himmelfarb Library offers an extensive collection of online information tools. The collection currently includes 2,400+ electronic journals, 200+ clinical textbooks, and more than 80 databases. The database collection includes research databases as well as databases to support clinical and evidence-based practice.

> **BMJ Clinical Evidence**

Continuously updated evidence on clinical interventions. Summarizes current state of knowledge and uncertainty about the prevention and treatment of clinical conditions, based on thorough searches and appraisal of the literature. Produced by the BMJ Publishing Group.

> **Cochrane Library**

High-quality, independent evidence includes Cochrane reviews plus additional databases including Database of Abstracts of Reviews of Effects, Cochrane Central Register of Controlled Trials, Cochrane Methodology Register, Health Technology Assessment Database, and the NHS Economic Evaluation Database.

> **eMedicine**

Knowledge-based information system with peer-reviewed, continuously updated medical reference articles, PDA downloadable textbooks, and image library. Also provides personalized education system and CME, CE, and OCEU.

> **MDConsult / FirstConsult**

FirstConsult segment provides evidence-based clinical information database with differential diagnosis, medical conditions, procedures, and patient education, while MDConsult connects users to electronic textbooks, practice guidelines, drug information, journal search, news, and patient education materials with emphasis on full-text materials.

> **UpToDate**

Evidence-based, regularly updated topic reviews. Please note: This resource available at the GW Hospital, MFA, and Himmelfarb Library ONLY. No off-campus access permitted.

MDConsult / FirstConsult and UpToDate both provide drug information to support clinical practice. Himmelfarb Library also offers additional drug information tools to support your clinical practice.

> **Lexi-Comp**

Comprehensive clinical drug information tool. Includes Lexi-Interact (drug interaction



Inside this issue...

- [Information Interface Home](#)
- [Database Digest](#)
- [Research Tools - Latest & Greatest](#)
- [Clinical Information Tools](#)
- [Color Printing Now Available](#)
- [Healthy DC - Go Local Launched](#)
- [Visit Himmelfarb Library on Facebook](#)
- [Historia Medicinæ - New GWUMC Journal](#)
- [E-Resources: Appropriate & Inappropriate Use](#)
- [Fall Reserves Deadline](#)
- [MedStudy Video Board Reviews](#)
- [Sexual Violence Prevention](#)
- [Board Review Collection: USMLE Step 1](#)
- [Art Show](#)
- [Class Calender](#)
- [Faculty Publications](#)
- [Library Hours](#)
- [Library Assistance](#)

module), Lexi-Drug ID (tablet and capsule identification), Lexi-CALC (medical calculators), I.V. Compatibility, and a Patient Care Module (patient education handouts).

> **Natural Medicines**

Natural medicines information including alternate and scientific names, uses, safety, efficacy, mechanism of action, active ingredients, adverse reactions, interactions, drug influence on nutrient levels and depletion, dosage and administration, brand names, and patient education handouts.

GWUMC faculty, staff, and students have 24/7 access to all of the Library's electronic resources. You can login to most of the Library's electronic resources from [off-campus](#) using your last name and GWid (G#), or by logging into VPN (GWireless) with your @gwu.edu login and password. If you have questions regarding remote access, please contact Laura Abate at mlblea@gwumc.edu or 202-994-8570.



[Comments](#) | [About](#) | [Intranet](#) | [GWUMC](#) | [Inside GWUMC](#) | [GWU](#)

Himmelfarb Health Sciences Library | The George Washington University Medical Center
2300 Eye St., NW, Washington, DC 20037 | Phone: (202) 994-2850 | Fax: (202) 994-4343

Himmelfarb Health Sciences Library



[Home](#) [About](#) [Site Map](#) [? Ask Us](#)

Information Interface

Office of Educational Resources
School of Medicine and Health Care Sciences
School of Public Health and Health Services

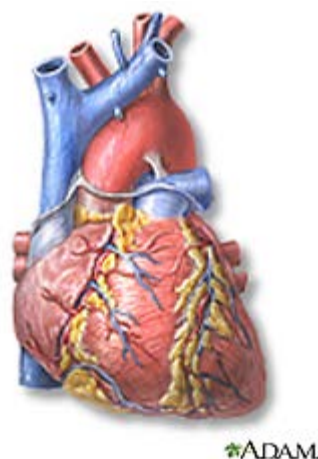
May/June 2009

Volume 37/Issue 2

Color Printing Now Available

Some things just look better in color. You can now print your PowerPoint slides, charts and graphs, and Flickr photos in color from any of the library's computers.

Select the color printer ("Himmelfarb Color Printer") from the printer options and then send your print job. The color printer is located in the student lounge on the third floor of Himmelfarb Library (in the Bloedorn Technology Center). The cost is 75 cents per page and is deducted from the balance on your GWorld card.



Inside this issue...

- [Information Interface Home](#)
- [Database Digest](#)
- [Research Tools - Latest & Greatest](#)
- [Clinical Information Tools](#)
- [Color Printing Now Available](#)
- [Healthy DC - Go Local Launched](#)
- [Visit Himmelfarb Library on Facebook](#)
- [Historia Medicinae - New GWUMC Journal](#)
- [E-Resources: Appropriate & Inappropriate Use](#)
- [Fall Reserves Deadline](#)
- [MedStudy Video Board Reviews](#)
- [Sexual Violence Prevention](#)
- [Board Review Collection: USMLE Step 1](#)
- [Art Show](#)
- [Class Calender](#)
- [Faculty Publications](#)
- [Library Hours](#)
- [Library Assistance](#)

Himmelfarb Health Sciences Library



[Home](#) [About](#) [Site Map](#) [? Ask Us](#)

Information Interface

Office of Educational Resources
School of Medicine and Health Care Sciences
School of Public Health and Health Services

May/June 2009

Volume 37/Issue 2

Health DC - Go Local Launched

People throughout the District of Columbia now have a fast, free, and easy way to find health services close to where they live and work.

Healthy DC - Go Local enables consumers to search for doctors, hospitals, clinics, health screening and testing



programs, support groups, mental health centers, counselors, and other programs and services. The site offers additional information and convenience because is it linked to **MedlinePlus**, the consumer health database of the **National Library of Medicine**.

From MedlinePlus pages about a given health topic, a user can select a link to the applicable Go Local site for information about related services that may be located nearby. Conversely, a Go Local user looking up local services by disease/condition can select a link to related health information from MedlinePlus.

Healthy DC - Go Local was created by medical librarians at **Himmelfarb Health Sciences Library** and **Georgetown University's Dahlgren Memorial Library**, in collaboration with librarians at **Howard University's Louis Stokes Health Sciences Library**.



Inside this issue...

[Information Interface Home](#)

[Database Digest](#)

[Research Tools - Latest & Greatest](#)

[Clinical Information Tools](#)

[Color Printing Now Available](#)

[Healthy DC - Go Local Launched](#)

[Visit Himmelfarb Library on Facebook](#)

[Historia Medicinæ - New GWUMC Journal](#)

[E-Resources: Appropriate & Inappropriate Use](#)

[Fall Reserves Deadline](#)

[MedStudy Video Board Reviews](#)

[Sexual Violence Prevention](#)

[Board Review Collection: USMLE Step 1](#)

[Art Show](#)

[Class Calender](#)

[Faculty Publications](#)

[Library Hours](#)

[Library Assistance](#)

Himmelfarb Health Sciences Library



[Home](#) [About](#) [Site Map](#) [? Ask Us](#)

Information Interface

Office of Educational Resources
School of Medicine and Health Care Sciences
School of Public Health and Health Services

May/June 2009

Volume 37/Issue 2

Visit Himmelfarb Library on Facebook!

Yes, that's right. Himmelfarb is now on Facebook!

Stop by and write on our wall. Or better yet, sign up to be one of our fans.

Current events, tutorials, photos, news, online research tools and access to IM Reference are all available on our Facebook page. Check it out today!

Himmelfarb Facebook Url: <http://www.facebook.com/pages/Washington-DC/Himmelfarb-Health-Sciences-Library/45756847078>



Inside this issue...

[Information Interface Home](#)

[Database Digest](#)

[Research Tools - Latest & Greatest](#)

[Clinical Information Tools](#)

[Color Printing Now Available](#)

[Healthy DC - Go Local Launched](#)

[Visit Himmelfarb Library on Facebook](#)

[Historia Medicinæ - New GWUMC Journal](#)

[E-Resources: Appropriate & Inappropriate Use](#)

[Fall Reserves Deadline](#)

[MedStudy Video Board Reviews](#)

[Sexual Violence Prevention](#)

[Board Review Collection: USMLE Step 1](#)

[Art Show](#)

[Class Calender](#)

[Faculty Publications](#)

[Library Hours](#)

[Library Assistance](#)

Himmelfarb Health Sciences Library



[Home](#) [About](#) [Site Map](#) [? Ask Us](#)

Information Interface

Office of Educational Resources
School of Medicine and Health Care Sciences
School of Public Health and Health Services

May/June 2009

Volume 37/Issue 2

Historia Medicinæ - New GWUMC Journal

GWUMC students have published a new online journal for articles on the history of medicine, [Historia Medicinæ](#). The journal is student run and has published its inaugural issue. Historia Medicinæ will cover "all periods of medical history from classical and ancient medicine to historical developments in modern medicine."

The first issue includes articles on:

- > **A Desire to Control: Contraception throughout the ages** by Megan Evans
- > **An Open Letter to (Future) Clinician-Historians: On the relevance of the American Association for the History of Medicine** by Kristen Ann Ehrenberger
- > **An Early Hope of Psychopharmacology: Bromide treatment in turn-of-the-twentieth-century psychiatry** by Howard Chiang



Historia Medicinæ can also be found on the Library's e-journals webpage beginning on Tuesday, April 28.



Inside this issue...

- [Information Interface Home](#)
- [Database Digest](#)
- [Research Tools - Latest & Greatest](#)
- [Clinical Information Tools](#)
- [Color Printing Now Available](#)
- [Healthy DC - Go Local Launched](#)
- [Visit Himmelfarb Library on Facebook](#)
- [Historia Medicinæ - New GWUMC Journal](#)
- [E-Resources: Appropriate & Inappropriate Use](#)
- [Fall Reserves Deadline](#)
- [MedStudy Video Board Reviews](#)
- [Sexual Violence Prevention](#)
- [Board Review Collection: USMLE Step 1](#)
- [Art Show](#)
- [Class Calender](#)
- [Faculty Publications](#)
- [Library Hours](#)
- [Library Assistance](#)

Himmelfarb Health Sciences Library



[Home](#) [About](#) [Site Map](#) [? Ask Us](#)

Information Interface

Office of Educational Resources
School of Medicine and Health Care Sciences
School of Public Health and Health Services

May/June 2009

Volume 37/Issue 2

E-Resources: Appropriate & Inappropriate Use

Recently, one of our journal publishers, the **American Chemical Society**, reported excessive downloading from several computers accessing journal articles via the George Washington University. In response, the American Chemical Society shut off access to their journals from segments of the GWU system.

Excessive downloading of content violates Himmelfarb Library's **Appropriate Use Policy**. In general, appropriate use permits users to conduct personal research to support education, research, and clinical practice, and to print or download individual copies of materials. GWU's licensed databases, journals, and textbooks do not permit users to copy or distribute the contents for any other purpose, to download large portions of the resources, or to re-post the resources on the Internet.



In this situation, the actions of a few can have consequences for the entire GWU campus. We are working to restore access to ACS titles, and wanted to remind users to respect the **Appropriate Use Policy**.



Inside this issue...

[Information Interface Home](#)

[Database Digest](#)

[Research Tools - Latest & Greatest](#)

[Clinical Information Tools](#)

[Color Printing Now Available](#)

[Healthy DC - Go Local Launched](#)

[Visit Himmelfarb Library on Facebook](#)

[Historia Medicinæ - New GWUMC Journal](#)

[E-Resources: Appropriate & Inappropriate Use](#)

[Fall Reserves Deadline](#)

[MedStudy Video Board Reviews](#)

[Sexual Violence Prevention](#)

[Board Review Collection: USMLE Step 1](#)

[Art Show](#)

[Class Calendar](#)

[Faculty Publications](#)

[Library Hours](#)

[Library Assistance](#)



Information Interface

Office of Educational Resources
 School of Medicine and Health Care Sciences
 School of Public Health and Health Services

May/June 2009

Volume 37/Issue 2

Fall Reserves Deadline

Faculty Members - now is a good time to start planning for your Fall semester reserve materials needs. Beat the last minute rush and submit your materials early! The early submission deadline is Monday, August 10, 2009. Submit them by the deadline to ensure that all your materials will be available to students at the start of classes. Materials are processed on a first come - first served basis.

To submit requests, use the **Request Print or Audiovisual Reserve** form (for materials to be kept on reserve at the library) or the **Request Reserves Materials for Blackboard** form (for e-reserve materials). These forms are fast and easy to use!

We can also assist faculty in linking to full-text resources in Himmelfarb Library's electronic collection. We can help you by configuring a durable, proxied URL so that your students can access the readings quickly and from both on- and off-campus locations. Faculty can also consult our online tutorial on **Linking to Electronic Articles and Books**.

For more information and to access the request forms, visit the **Course Reserves webpage**. If you have questions, please contact the Reserves Department at mlbrsv@gwumc.edu or 202- 994-1827.

Image citation: Anonymous (1971). Ohio University's Alden Library Reserve Desk, 1971. [Online image]. Retrieved June 4, 2009 from <http://www.flickr.com/photos/ohiouniversitylibraries/3461607693/>.



Inside this issue...

- Information Interface Home
- Database Digest
- Research Tools - Latest & Greatest
- Clinical Information Tools
- Color Printing Now Available
- Healthy DC - Go Local Launched
- Visit Himmelfarb Library on Facebook
- Historia Medicinæ - New GWUMC Journal
- E-Resources: Appropriate & Inappropriate Use
- Fall Reserves Deadline**
- MedStudy Video Board Reviews
- Sexual Violence Prevention
- Board Review Collection: USMLE Step 1
- Art Show
- Class Calender
- Faculty Publications
- Library Hours
- Library Assistance



Himmelfarb Health Sciences Library



[Home](#) [About](#) [Site Map](#) [? Ask Us](#)

Information Interface

Office of Educational Resources
School of Medicine and Health Care Sciences
School of Public Health and Health Services

May/June 2009

Volume 37/Issue 2

MedStudy Video Board Reviews - Now Available

The MedStudy Video Board Review of Internal Medicine is a series of 19 DVDs with an accompanying guide to help internal medicine residents prepare for Step 3 of the Boards. This resource is now available in the Bloedorn Technology Center on 3rd floor of Himmelfarb Library. The MedStudy Video Board Review of Internal Medicine can be found at call number RC59 .M492 2009.



Inside this issue...

[Information Interface Home](#)

[Database Digest](#)

[Research Tools - Latest & Greatest](#)

[Clinical Information Tools](#)

[Color Printing Now Available](#)

[Healthy DC - Go Local Launched](#)

[Visit Himmelfarb Library on Facebook](#)

[Historia Medicinae - New GWUMC Journal](#)

[E-Resources: Appropriate & Inappropriate Use](#)

[Fall Reserves Deadline](#)

[MedStudy Video Board Reviews](#)

[Sexual Violence Prevention](#)

[Board Review Collection: USMLE Step 1](#)

[Art Show](#)

[Class Calender](#)

[Faculty Publications](#)

[Library Hours](#)

[Library Assistance](#)

Himmelfarb Health Sciences Library



[Home](#) [About](#) [Site Map](#) [? Ask Us](#)

Information Interface

Office of Educational Resources
School of Medicine and Health Care Sciences
School of Public Health and Health Services

May/June 2009

Volume 37/Issue 2

Sexual Violence Prevention, Medication Errors, and Socio-economic and Racial Inequities In Health

Himmelfarb Library's audiovisual collection has expanded with the acquisition of several new resources. These resources are available in the Bloedorn Technology Center which is located on 3rd floor of Himmelfarb Library .

- > **Preventing sexual violence: an educational toolkit for health care professionals [CD-ROM]**. Call number: RJ507 .S49 P748 2009. Located on AV Reserve.

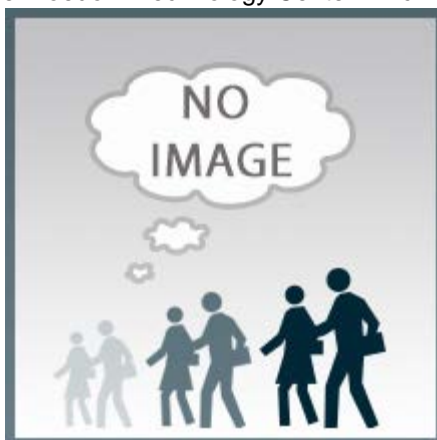
Provides healthcare professionals with strategies and tools to address sexual violence prevention in their practice and community in the context of each family's unique views and history.

- > **Unnatural Causes: Is Inequality Making Us Sick? [DVD]**. Published by California Newsreel. Call number: RA448.4.U53 2008.

"UNNATURAL CAUSES sounds the alarm about the extent of our alarming socio-economic and racial inequities in health-and searches for their root causes. But those causes are not what we might expect ... It turns out there's much more to our health than bad habits, health care or unlucky genes. The social conditions in which we are born, live and work profoundly affect our well-being and longevity."-- Producer's website.

- > **Beyond Blame [DVD]**. Produced for Bridge Medical by Caribiner International. Call Number: RM146 B41 2008.

This program offers a compilation of interviews on the subject of medication errors with health care professionals across the U.S., recorded in the fall of 1997.



Inside this issue...

[Information Interface Home](#)

[Database Digest](#)

[Research Tools - Latest & Greatest](#)

[Clinical Information Tools](#)

[Color Printing Now Available](#)

[Healthy DC - Go Local Launched](#)

[Visit Himmelfarb Library on Facebook](#)

[Historia Medicinæ - New GWUMC Journal](#)

[E-Resources: Appropriate & Inappropriate Use](#)

[Fall Reserves Deadline](#)

[MedStudy Video Board Reviews](#)

[Sexual Violence Prevention](#)

[Board Review Collection: USMLE Step 1](#)

[Art Show](#)

[Class Calender](#)

[Faculty Publications](#)

[Library Hours](#)

[Library Assistance](#)

Himmelfarb Health Sciences Library



[Home](#) [About](#) [Site Map](#) [? Ask Us](#)

Information Interface

Office of Educational Resources
 School of Medicine and Health Care Sciences
 School of Public Health and Health Services

May/June 2009

Volume 37/Issue 2

Board Review Collection: USMLE Step 1

For the last five years the Himmelfarb Library has maintained a collection of test preparation and review books for 2nd year medical students preparing for the USMLE Step 1 exam. The collection includes:

> **Review books (Print).**

In addition to a selection of titles that focus on a general review for the exam, the Library also purchases titles in the specific subject areas of anatomy and embryology, behavioral sciences, biochemistry,



microbiology and immunology, pathology, pharmacology and physiology. All titles are available in Reserves (checkout period = one week), and select titles have additional copies available in the Stacks (checkout period = three weeks). Himmelfarb's board review collection is based upon the recommendations found in the latest edition of 'First Aid for the USMLE STEP 1.' The library acquires titles that are rated A, A- and B+ by the editors.

- > **Review books (Online).** A number of review books are available in electronic format. Step 1 titles include [Clinical Vignettes for the USMLE Step 1: Self-Assessment and Review](#), [First Aid for the USMLE Step 1](#), and [Lange Outline Review : USMLE Step 1](#).
- > **Audio CDs and Videos/DVDs.** Himmelfarb Library provides audio and video review programs for steps 1, 2, and 3, including the MedStudy Video Board Review of Internal Medicine.
- > **Computer Review Programs.** These programs can be accessed in Himmelfarb Library or from off-campus locations. Available programs include the Exam Master Medical Subject Review, Harrison's Principles of Internal Medicine: Self-Assessment and Board Review, and USMLEasy Lite.

If you have recommendations or questions concerning our collection, please contact George Paul, Head, Collection Development at 994-3682 or mlbgpp@gwumc.edu.

Image created using [Wordle](#)



Inside this issue...

- [Information Interface Home](#)
- [Database Digest](#)
- [Research Tools - Latest & Greatest](#)
- [Clinical Information Tools](#)
- [Color Printing Now Available](#)
- [Healthy DC - Go Local Launched](#)
- [Visit Himmelfarb Library on Facebook](#)
- [Historia Medicinae - New GWUMC Journal](#)
- [E-Resources: Appropriate & Inappropriate Use](#)
- [Fall Reserves Deadline](#)
- [MedStudy Video Board Reviews](#)
- [Sexual Violence Prevention](#)
- [Board Review Collection: USMLE Step 1](#)**
- [Art Show](#)
- [Class Calender](#)
- [Faculty Publications](#)
- [Library Hours](#)
- [Library Assistance](#)

Himmelfarb Health Sciences Library



[Home](#) [About](#) [Site Map](#) [? Ask Us](#)

Information Interface

Office of Educational Resources
School of Medicine and Health Care Sciences
School of Public Health and Health Services

May/June 2009

Volume 37/Issue 2

2009 Art Show

Thank you to all of the artists for contributing work for the Himmelfarb Library's 2009 Annual Art Show and to everyone from the Medical Center community who came to support the opening!

All of the work featured in the show was done by the students, faculty and staff of the GWUMC. You can still view the art show online by accessing the [Virtual Art Show](#).

Image citation: Hess, C. (2009). Beached in Bali. [Online image]. Retrieved June 1, 2009 from <http://www.gwumc.edu/library/about/2009artshow/>.



Catherine Hess
Beached in Bali
Watercolor



Inside this issue...

[Information Interface Home](#)

[Database Digest](#)

[Research Tools - Latest & Greatest](#)

[Clinical Information Tools](#)

[Color Printing Now Available](#)

[Healthy DC - Go Local Launched](#)

[Visit Himmelfarb Library on Facebook](#)

[Historia Medicinæ - New GWUMC Journal](#)

[E-Resources: Appropriate & Inappropriate Use](#)

[Fall Reserves Deadline](#)

[MedStudy Video Board Reviews](#)

[Sexual Violence Prevention](#)

[Board Review Collection: USMLE Step 1](#)

Art Show

[Class Calender](#)

[Faculty Publications](#)

[Library Hours](#)

[Library Assistance](#)