

# Assessment of Departmental Journal Requests and Impact on an Academic Health Sciences Library Collection: An Unanticipated Benefit

Anne Linton, MS (Director, Library Services) and Kathe Obrig, MLS (Associate Director, Collections and Access Services)

Paul Himmelfarb Health Sciences Library, The George Washington University Medical Center

## Background

- Decision made for SY2005 to convert to predominantly electronic journal collection (conversion completed 2007)
- Requirement established that all converted titles be available by site license and with intent to provide content back to 1995 whenever possible
- Intent for increased collaboration with Main Campus Library to take advantage of site license discounts and to improve access to interdisciplinary materials
- Library operating under Medical Center budget constraints

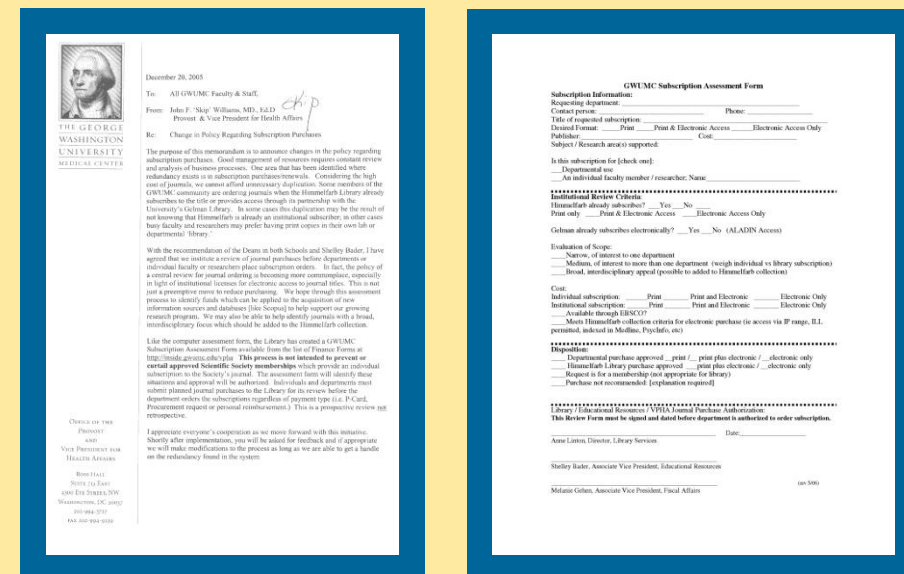
## Objectives

- To reduce spending on duplicate purchases by departments through
  - Identification of journal titles already held by Himmelfarb or Gelman (Main Campus Library)
  - Assessment of availability of titles at the desktop
- To evaluate and fine-tune the Himmelfarb journal collection in light of departmental requests
- To identify funds for new resources if possible

## Guidelines

- Promise made not to cancel subscriptions included in society memberships
- Requests for duplicate purchases were denied if
  - Table of contents was easily available at the desktop
  - No embargoes/time delays were in effect
  - Online content equaled or exceeded print content
  - Titles were of broad interest to Medical Center community, i.e. supported major programs

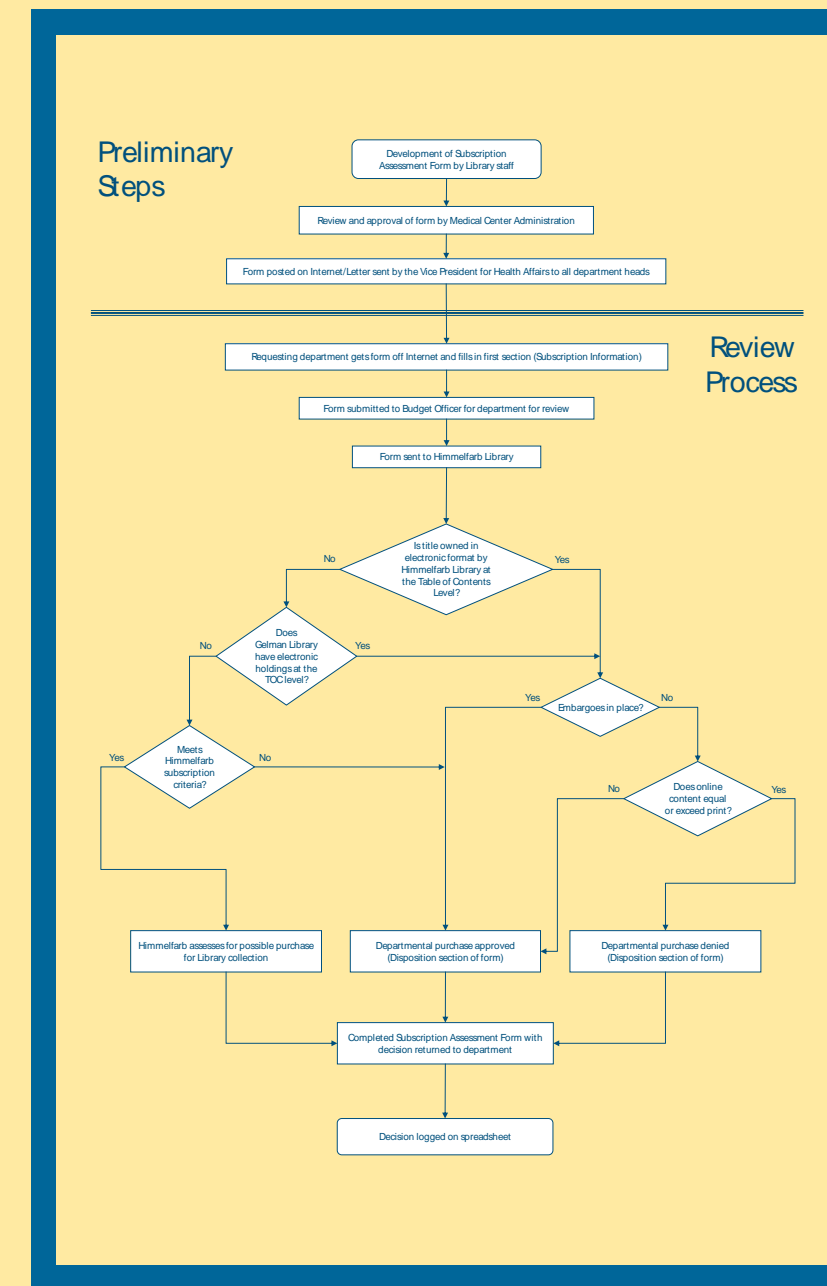
## Subscription Assessment Policy and Form



## Subscription Assessment Spreadsheet

Department	Journal	Dept purchase approved	Titles already available	Cost	Notes
Prevention & Community Health	Lancet	no	accessible	\$200	
MITM	Lancet	no	accessible	\$1611	
Office of Homeland Security	Leadership directories	yes		\$243	
MCCM	Leadership directory	yes		\$1,176	
Biomedical Communications	MacWorld	no	accessible	\$25	
	Medical Research Law & Policy				
Office of Health Research	Paper	yes		\$1,195	
Health Services Mgm & Leadership	Modern Healthcare	no	accessible	\$149	
Provost & VP	Modern Healthcare	no	accessible	\$149	
Biochemistry	Molecular Cell	no	accessible	\$182	
Biochemistry	Molecular Cell	no	accessible	\$182	
Biochemistry	National Academy of Social insurance membership	yes		\$150	membership
Health Policy	National Law Journal	yes		\$210	
Biochemistry & Molecular Biology	Nature	no	accessible	\$199	
Biochemistry	Nature	no	accessible	\$99	
Biochemistry & Molecular Biology	Nature Medicine	no	accessible	\$159	
Biochemistry	New England Journal of Medicine	no	accessible	\$149	request withdrawn
Medical School Admissions	New Physician	yes		\$38	
Dean's Office	New Physician	yes		\$26	
SPHHS	New York Times	yes		\$120	
VPHA	New York Times	yes		\$250	
Health Policy	New York Times Online	yes		\$50	
Health Services Mgm & Leadership	New York Times Online	yes		\$130	
Office of Homeland Security	Newsweek	yes		\$42	
VPHA	Newsweek	yes		\$24	
MC General Safety	NFPA code Directory	yes		\$650	
Medical Center Advancement	Non-profit Times	yes		\$65	

## Subscription Assessment Process



## Results

- 93 forms from 39 departments received
- 50% of journal titles requested were fully available in electronic format; requests were denied
- Additional areas for growth identified especially in nursing, education, health policy areas, and business of health
- Departments with changing needs identified
- Need for additional education about electronic journals became painfully apparent

## Ongoing Impact

- Three new nursing titles added to collection
- Major indexing tool purchased with money saved from use of process
- Major changes made to electronic journals page: interdisciplinary titles added; aggregator titles dropped; subject headings under revision
- Opened ongoing conversation with faculty regarding nature of Library's collection
- Plans made to meet with faculty over summer to assess Himmelfarb collection further
- Began discussions with GWU Law Library for sharing health policy/legislative policy materials
  - One electronic health law compilation selected and implemented
  - Other products still in discussion
- Over five educational sessions scheduled as a direct result of subscription assessment discussions
- Initiated Electronic Journals Month: flyers, contests, luncheons
- Plans made to increase number of training sessions for accessing e-collection
- Forms continue to be submitted and the process will be repeated in the upcoming budget cycle
- Maintain spreadsheet of requests for collection assessment:
  - Which departments submitted the most requests?
  - Which are the most requested titles?
  - Which are the most requested subjects?